







City of Wenatchee Shoreline Master Program Environmental Designations Map 1 of 4

Legend

Environment Designation

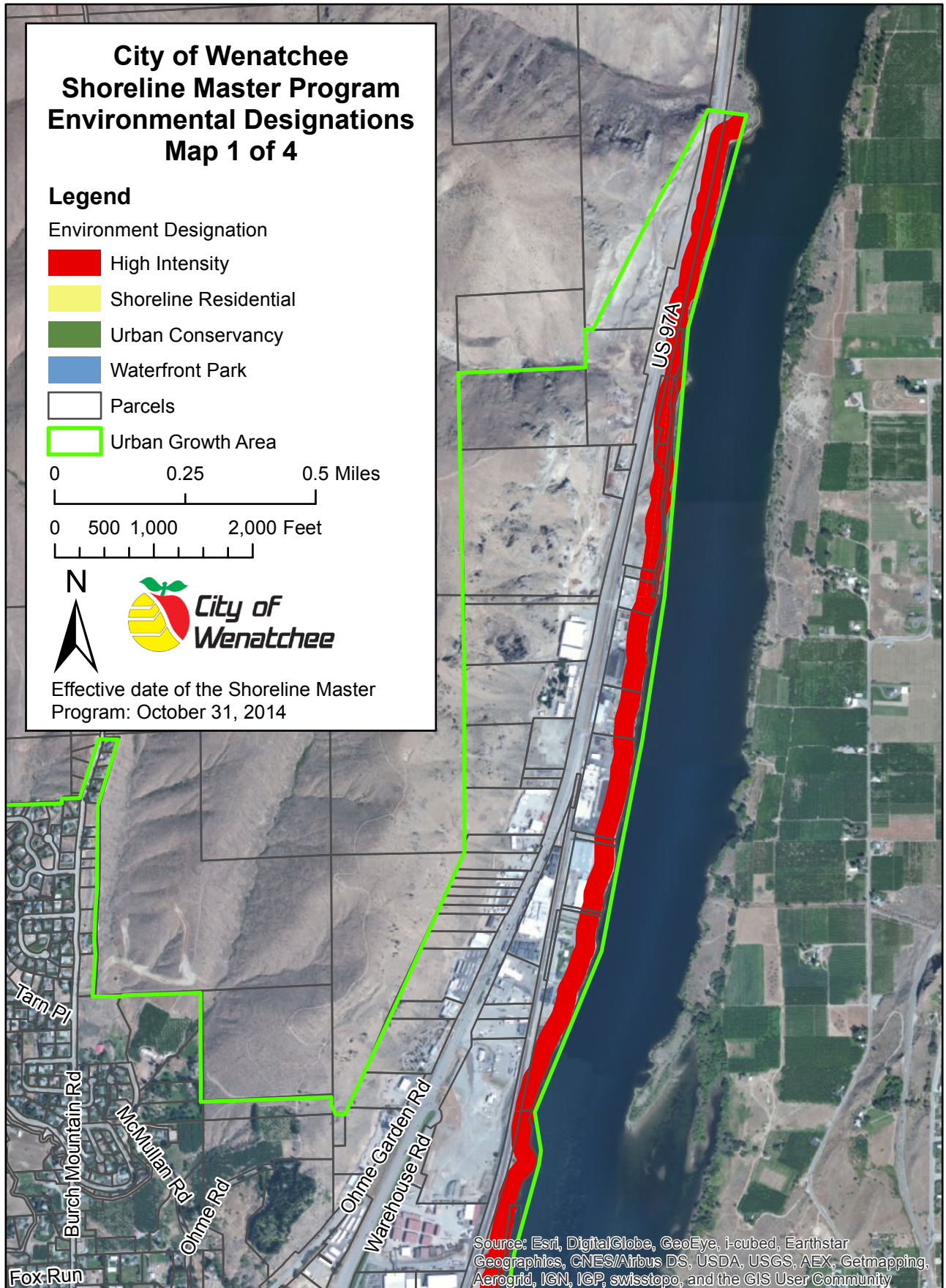
-  High Intensity
-  Shoreline Residential
-  Urban Conservancy
-  Waterfront Park
-  Parcels
-  Urban Growth Area

0 0.25 0.5 Miles

0 500 1,000 2,000 Feet



Effective date of the Shoreline Master Program: October 31, 2014

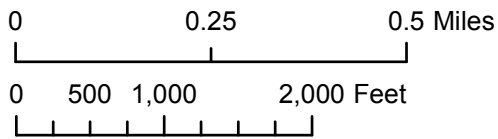


Source: Esri, DigitalGlobe, GeoEye, i-cubed, Earthstar Geographics, CNES/Airbus DS, USDA, USGS, AEX, Getmapping, Aerogrid, IGN, IGP, swisstopo, and the GIS User Community

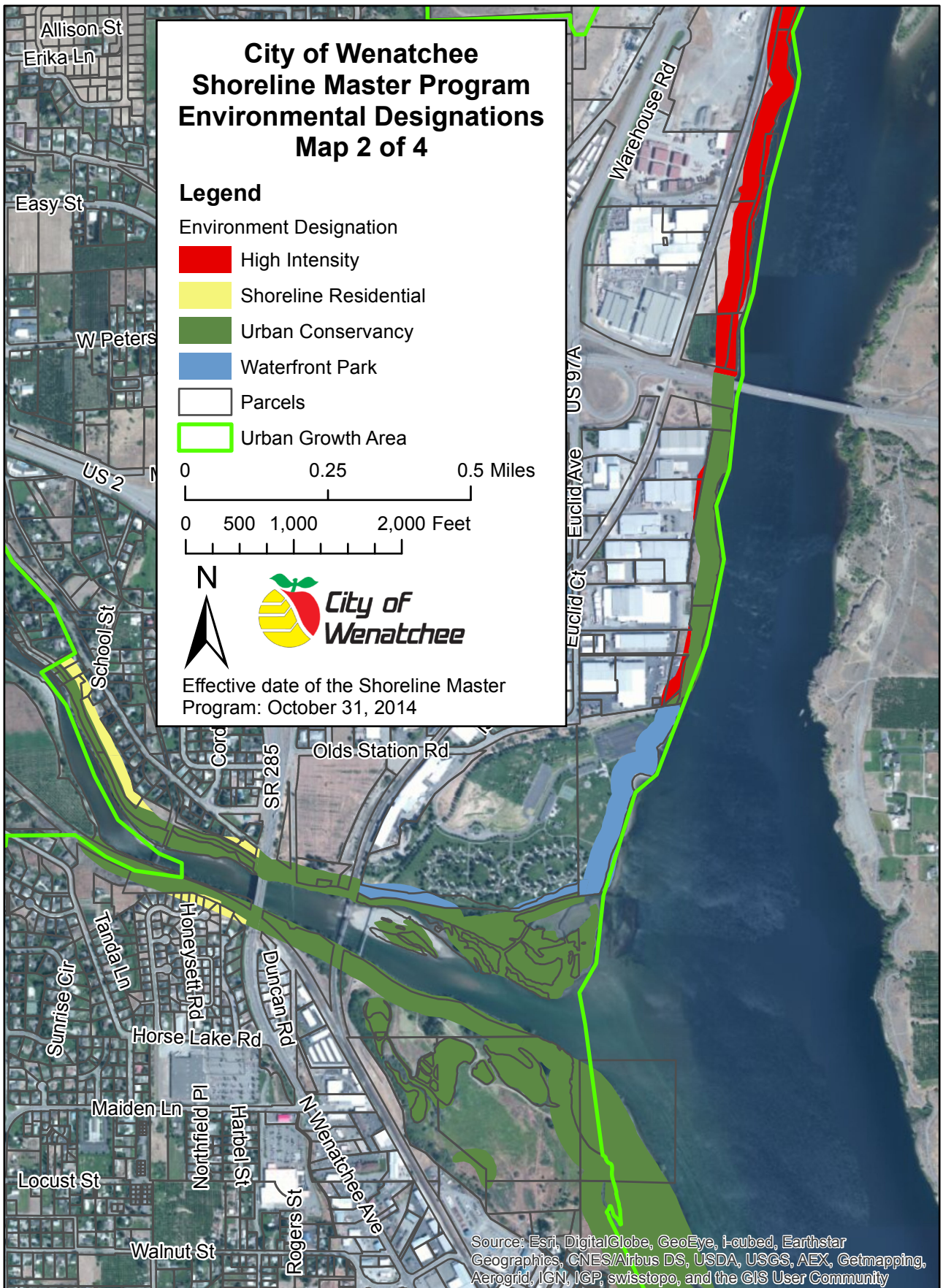
City of Wenatchee Shoreline Master Program Environmental Designations Map 2 of 4

Legend

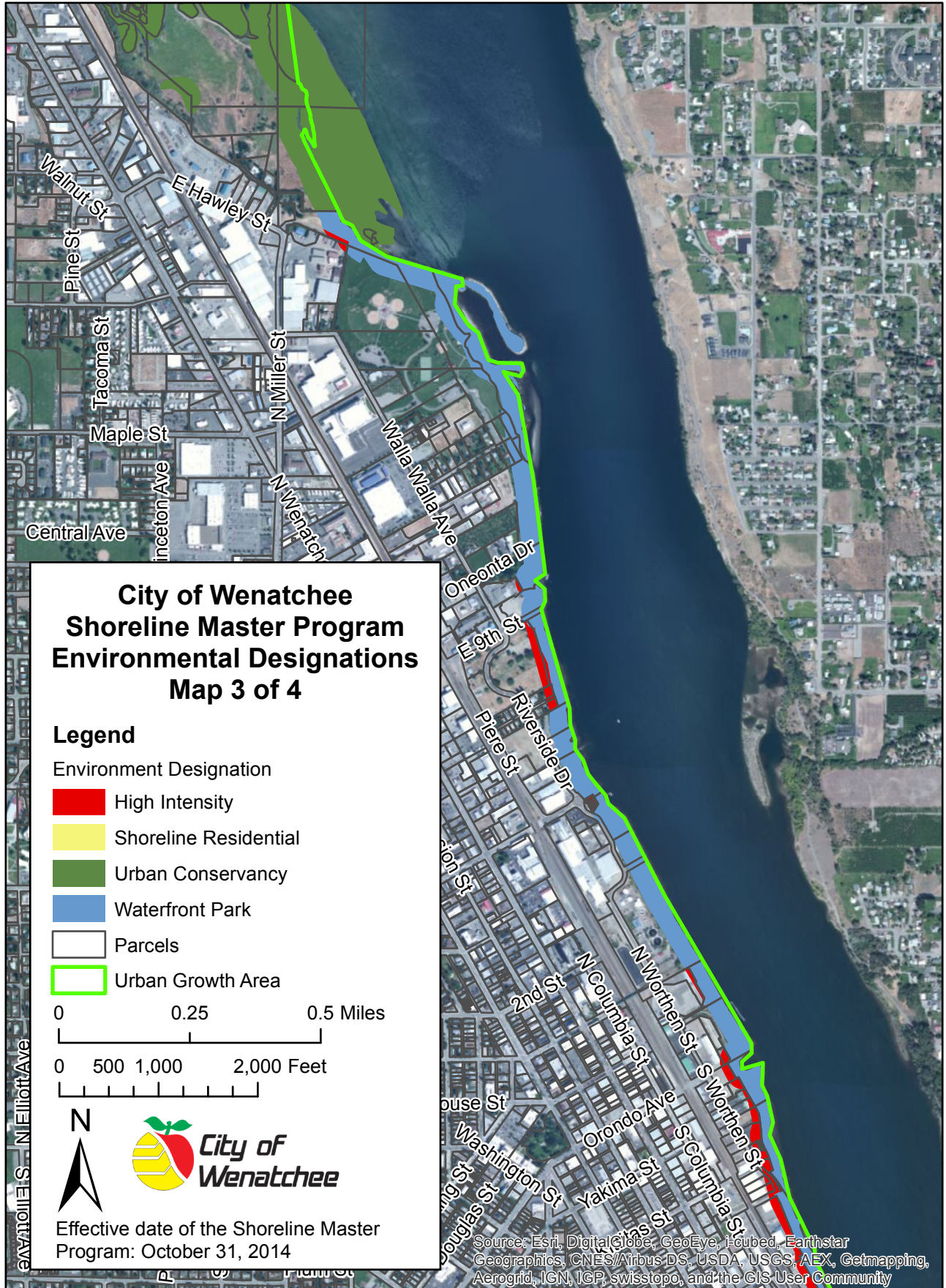
- Environment Designation
- High Intensity
 - Shoreline Residential
 - Urban Conservancy
 - Waterfront Park
 - Parcels
 - Urban Growth Area



Effective date of the Shoreline Master Program: October 31, 2014



Source: Esri, DigitalGlobe, GeoEye, i-cubed, Earthstar Geographics, CNES/Airbus DS, USDA, USGS, AEX, Getmapping, Aerogrid, IGN, IGP, swisstopo, and the GIS User Community



**City of Wenatchee
Shoreline Master Program
Environmental Designations
Map 3 of 4**

Legend

- Environment Designation
- High Intensity
 - Shoreline Residential
 - Urban Conservancy
 - Waterfront Park
 - Parcels
 - Urban Growth Area

0 0.25 0.5 Miles

0 500 1,000 2,000 Feet



Effective date of the Shoreline Master Program: October 31, 2014

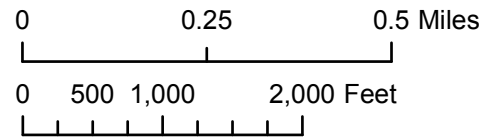
Source: Esri, DigitalGlobe, GeoEye, i-cubed, Earthstar Geographics, CNES/Airbus DS, USDA, USGS, AEX, Getmapping, Aerogrid, IGN, IGP, swisstopo, and the GIS User Community

City of Wenatchee Shoreline Master Program Environmental Designations Map 4 of 4

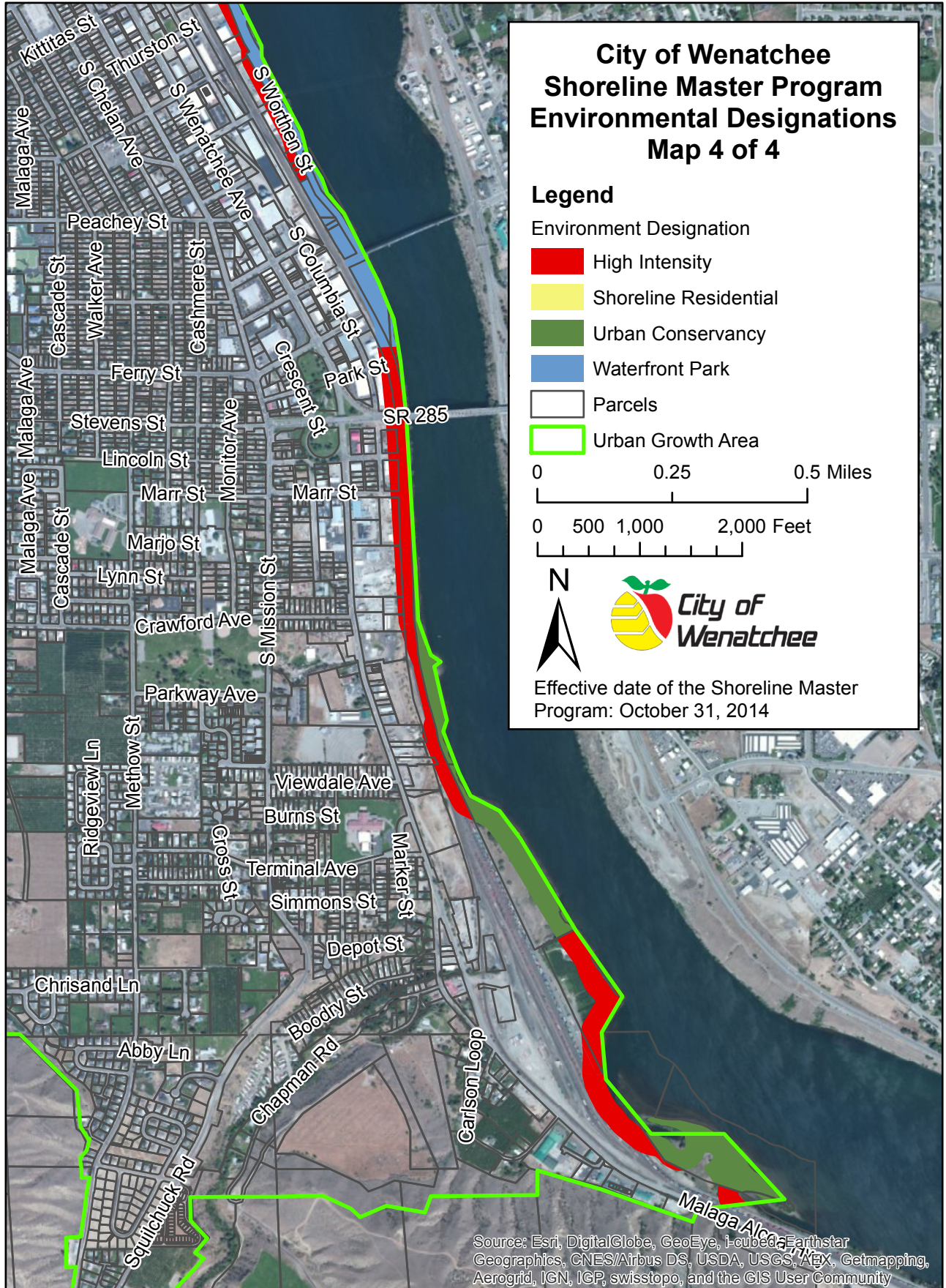
Legend

Environment Designation

- High Intensity
- Shoreline Residential
- Urban Conservancy
- Waterfront Park
- Parcels
- Urban Growth Area



Effective date of the Shoreline Master Program: October 31, 2014



Source: Esri, DigitalGlobe, GeoEye, I-cubed, Earthstar Geographics, CNES/Airbus DS, USDA, USGS, AeroX, Getmapping, Aerogrid, IGN, IGP, swisstopo, and the GIS User Community