

Appendix F

Public

Access

Plan

Wenatchee Shoreline Public Access Plan

This Wenatchee Shoreline Public Access Plan documents how the City has planned for parks and recreation in the community, and particularly along the Columbia and Wenatchee Rivers, pursuant to WAC 173-26-221 (4)(c), including identifying specific public needs and opportunities to provide public access through an open public process. This plan is based on the *Wenatchee Urban Area Comprehensive Plan, City of Wenatchee 2012-2018 Parks, Recreation and Open Space Comprehensive Plan*, and the *Wenatchee Waterfront Sub-area Plan*. The City's efforts address a variety of shoreline access opportunities and circulation for pedestrians, bicycles, and vehicles between shoreline access points, and include recommended projects, actions and view access locations.

Shoreline Public Access Laws and Rules

Public access refers to the ability of the general public “to reach, touch, and enjoy the water's edge, to travel on the waters of the state, and to view the water and the shoreline from adjacent locations” (WAC 173-26-221(4)(a)). Public access can be physical access such as via a trail or park and/or visual such as a view corridor from a road.

Public access is a preferred use per the Shoreline Management Act (RCW 90.58.020). The Shoreline Master Program (SMP) Guidelines require that public access be provided with most new development, except that more flexibility is allowed where there is a coordinated public access planning process (WAC 173-26-221(4)(c)). When public access is addressed in a SMP, it implements the “public trust doctrine” which is a common law principle holding that “the waters of the state are a public resource owned by and available to all citizens equally for the purposes of navigation, conducting commerce, fishing, recreation and similar uses.” While the doctrine “protect(s) public use of navigable water bodies below the ordinary high water mark,” the doctrine “does not allow the public to trespass over privately owned uplands to access the tidelands.”¹ Generally, public or private landowners are limited in terms of liability when there are unintentional injuries to any public access users based on state law at RCW 4.24.210.

Shoreline Recreation Plans and Goals

The *Wenatchee Urban Area Comprehensive Plan, City of Wenatchee 2012-2018 Parks, Recreation and Open Space Comprehensive Plan*, and the *Wenatchee Waterfront Sub-area Plan* address shoreline

¹ See the State of Washington's Department of Ecology's website at: http://www.ecy.wa.gov/programs/sea/sma/laws_rules/public_trust.html. Accessed January 2013.

public access within the City of Wenatchee and its urban growth area. The following goals and policies promoting shoreline public access are found in the above identified plans:

- The City of Wenatchee should acquire and develop an interconnected system of multi-functional parks, trails, recreation facilities and open spaces that is attractive, safe and available to all segments of the City’s population.
- The City of Wenatchee should recognize that the Wenatchee waterfront is a unique regional recreational resource.
- The City of Wenatchee should provide visual access to the water whenever possible. Develop viewpoints where the topography prevents direct access.
- The City of Wenatchee should develop and use waterfront parks for activities and interests specifically related to the shoreline environment.
- The City of Wenatchee should provide opportunities for walking and visits where terrain and shore conditions permit public access.
- The City of Wenatchee should implement the adopted Waterfront Sub Area Plan policies and projects for parks, trails, and public access.
- The City of Wenatchee should protect the environmental integrity of the waterfront trail and park. Specifically:
 - Minimize the loss of open space and landscaped areas within the park.
 - Expand and improve the waterfront trail, where necessary, to support usage and minimize conflicts between different types of users.
 - Design park improvements to complement and enhance surrounding park features.

Parks and Recreation Plans and Public Review Process

The City’s Parks and Recreation goals and plans have been created with extensive public review. Public participation opportunities included public open houses, meetings, hearings, and other activities. Notice was provided to a variety of agencies and citizens.

Parks Documentation and Process	Description
Plans	Wenatchee Urban Area Comprehensive Plan Adopted 2007. Periodically amended through a docket process. City of Wenatchee Parks, Recreation & Open Space Plan. Adopted 2011. Plan includes existing system, goals and standards, and implementation action plan. Wenatchee Waterfront Sub-area Plan, 2003. Includes goals and policies, concept plans, and implementation activities.

Parks Documentation and Process	Description
Public Involvement Process	Comprehensive Plan: Planning Commission meetings and legislative hearings. Waterfront Sub-area Plan: Open Houses, Planning Commission meetings and legislative hearings. Parks and Recreation Plan: Community meetings, survey, news ads, Parks and Recreation Board and Parks, Recreation & Open Space Comprehensive Plan Update Advisory Committee meetings, and legislative hearings.

Current and Future Facilities in Shoreline Jurisdiction

Open space and park acres within the shoreline jurisdiction include about 120 acres total on the Wenatchee and Columbia Rivers, with more than two-thirds of the acres on the Columbia River and one third on the Wenatchee River. Several park areas offer water access via boat launches, piers, or trails. Waterfront parks and trails in the City and UGA of Wenatchee include the following identified areas:

- Washington Confluence State Park** at the “confluence” of the Columbia, and Wenatchee Rivers: The facility was built and is owned by the Chelan County PUD, but is operated and maintained by Washington State Parks and includes overnight RV and tent campsites, a boat launch, swimming beach, restrooms, showers, picnic shelter, volleyball, tennis courts, playground, pedestrian bridge across the river, 4.5 miles of trail, wildlife habitat, and interpretive graphics.
- Riverfront Park:** This 31-acre park is managed by the Chelan County PUD, and contains restrooms, a boat launch, short-term moorage and boat trailer parking, 1.1 miles of shoreline trail, a non-motorized boating storage facility and launch at Ninth Street (Wenatchee Row and Paddle Club), and a “special event” mini-railroad.
- Walla Walla Park:** This 70-acre park adjoins the Riverfront Park, and contains restrooms, picnic shelters, ballfields, swimming area, 1.2 miles of trail, tennis and volley ball courts, horseshoe pits, a playground, and fishing pier platform.
- Apple Capital Loop Trail:** This trail fronts the Columbia River along Wenatchee in Chelan County and “loops” through East Wenatchee in Douglas County. The portion in Wenatchee is a multi-use trail approximately 5 miles long. It was established in 1990.

Community Parks and Recreation Standards

The City’s 2012-2018 *Parks, Recreation and Open Space Comprehensive Plan* includes a level of service standard for different facilities community wide. These standards were considered in the development of specific parks and recreation improvements for the current and future City of Wenatchee population.

CLASSIFICATION TYPE	ACRES (A)	STANDARD (D)
Park System Standard	325.31	10 acres/1,000 people
Neighborhood Park	25.35	2 acres/1,000 people
Community Park	93.40	7 acres/1,000 people
Regional Park	206.56	8 acres/1,000 people
Natural Open Space	566.04	20 acres/1,000 people
Special Use Areas	213.38	5 acres/1,000 people
SPECIALIZED FACILITY TYPE	EXISTING FACILITIES	RECOMMENDED STANDARD
Trails	4.7	0.5 miles/1,000 people
Pathways	3.6	0.25 miles/1,000 people
Bikeways	3.6	0.25 miles/1,000 people
Baseball Field	3	1 field/8,500 people
Youth Baseball Field	7	1 field/2,500/ people
Basketball Hoops	49	1 hoop/1,000 people
BMX Area	0	1 area/30,000 people
Dog Off Leash Area	0	1 area/30,000 people
Football Field	4	1 field /8,000 people
Disc Golf Course	1	1 course/35,000 people
Gymnasium	12	1 gym/2,500 people
Horseshoe Pitch	5	1 pitch/10,000 people
Picnic Area	15	1 area/2,000 people
Play Area	13	1 area/2,000 people
Indoor Pool	1	1 pool/30,000 people
Outdoor Pool	1	1 pool/30,000 people
Recreation Center	0	1 center/30,000 people
Golf Courses	0	1 course/50,000 people
Rock Climbing Wall	0	1 wall/35,000 people
Sand Volleyball Court	3	1 court/10,000 people

Skate Spot, Dot, Area	1	1 area/2,000 people
Soccer Field	9	1 field/2,500 people
Softball Field	10	1 field/2,500 people
Tennis Court	19	1 court/2,000 people
Indoor Tennis Court	0	1 court/30,000 people
Indoor Soccer Field	0	1 field/30,000 people
Water Play Area	4	1 area/5,000 people

Design Standards for Trails

Trails, pathways and bikeways are designed to provide walking, bicycling and other non-motorized recreational opportunities. By providing linkages to other areas and facilities, they allow safe, non-vehicular options for travel throughout the community. Trails can be designed for single or multiple uses.

Primary Trails are intended for multiple uses, are accessible wherever possible, and are located conveniently to connect several community facilities. They are designed to be paved and have a minimum improved surface width of ten (10) feet with a one foot clear area on each side of the paved surface. Primary Trails should have limited road crossings, which disrupt the flow and continuity of the trail. For this reason, primary trails are built in greenways, along irrigation or river corridors or along utility easements or abandoned roads or railroads. Road crossings are limited and will be signed, identifying the crossing to the motorist and the trail user and designated with a crosswalk and bollards at the trail entrances. Trail alignments take into consideration ADA accessibility. Maximum gradients should not exceed a cross slope of 2% and a longitudinal slope of 5%.

Pathways are informal connections through or between neighborhoods, and are appropriate for pedestrian and bicycle use. The path is typically a minimum width of four (4) feet. It may be native soil, wood chips, crushed rock, or paved depending on the use, location, and underlying conditions.

Design Standards for Trails

Bikeways are different than park trails in that their principal focus is on safe and efficient transportation. Typical bikeway users groups would include bicycle commuters, fitness enthusiasts, and competitive athletes. Their emphasis is on speed, which can be in serious conflict with recreation type trails and user groups. For this reason, it is important in planning trails and bikeways that the trails not be substitutes for bikeways (and vice-versa). If such dual

uses cannot be avoided, it is important that the trail or bikeway be designed with more flexibility, such as for higher speeds, including passing zones and greater widths.

Class I Bikeways are paved trails separated from public rights-of-way, principally for the use of bicycles, but typically also shared with other trail users so they are actually Primary Trails when serving this multi-use function. The minimum paved width is ten (10) feet, with one foot clearance on both sides. Generally, the bikeway has a two-way traffic separated by a centerline.

Public Access Analysis & Objectives by Shoreline Reach

Much of the Wenatchee waterfront is in public ownership by the Chelan County Public Utility District, State of Washington, or City. The majority of the publicly owned land has been put to public access and recreational use as identified in the plans identified above and attached maps. These plans have scheduled parks and recreation improvements in or near the shoreline to include, but not limited to waterfront parking, waterfront trail upland access, and a boathouse.

The Shoreline Inventory and Analysis Report (Appendix A of the Shoreline Master Program) identifies public access conditions in numbered reaches and provides maps. See table below for an inventory of current and planned facilities from the shoreline inventory and analysis report, the *Wenatchee 2012-2018 Parks, Recreation and Open Space Comprehensive Plan*, the *Wenatchee Waterfront Sub-area Plan*, and the *State of Washington’s Wenatchee Confluence Area State Parks Management Plan (2007)*. (Inventory maps and City waterfront, parks, and recreation maps are found at the conclusion of this document.)

Waterbody and Reach	Current Shoreline Facilities	Planned Shoreline Facilities	Discussion
Columbia River			
CWN 01, 02	None	None	Access is difficult due to rail lines. Future planned use is industrial.
CWN 03, 04, 05	None. Land in PUD ownership.	None	Access is difficult due to rail lines. Future planned use is industrial.
CWN 06	Locomotive Gateway Park (aka Mission Street Park) Potential right of way access	Re-landscape Locomotive Gateway Park	
CWN 07	Riverfront Park, Linden Tree Area Park, Walla Walla Park	Waterfront Sub-Area Plan includes improvements for three nodes in this reach (see Waterfront Sub Area Plan diagrams).	Southern node: new pedestrian plaza; park and trail enhancements; new waterfront park south of the cross-river bridge; enhance the south end shoreline environment.

Waterbody and Reach	Current Shoreline Facilities	Planned Shoreline Facilities	Discussion
			<p>Central node: construct non-motorized boat facility; east of Riverside Drive expand and improve Waterfront Park with multipurpose shelters; develop a public viewpoint and sternwheeler moorage and dock at 5th Street; and aquatic environmental enhancements vicinity of 9th Street.</p> <p>Northern node, waterfront plan area: access, parking, trail, and ball field improvements to Walla Walla Park; environmental education center/urban agricultural center north of Hawley Street; and shoreline environmental enhancements.</p>
CWN 08	Confluence Park	Park improvements are addressed in the 2007 <i>Wenatchee Confluence Area State Parks Management Plan</i>	State plan addresses: Expansion/improvement of visitor services and facilities Recreation design-grounds improvements Expansion of trail network
CWN 09	Confluence Park	See above	See above
CWN 10	None. Land in PUD ownership.	Trail extension	
CWN 11	None	None	
CWN 12	None	None	
CWN 13	None. Land in PUD ownership.	None	
Wenatchee River			
CWN 01	Confluence Park	Park improvements are addressed in the 2007 <i>Wenatchee Confluence Area State Parks Management Plan</i>	State plan addresses: Expansion/improvement of visitor services and facilities Recreation design-grounds improvements Expansion of trail network

Waterbody and Reach	Current Shoreline Facilities	Planned Shoreline Facilities	Discussion
CWN 02	None. Land in PUD ownership.	None	
CWN 03	None.	None	
CWN 04	WDFW ownership and fishing easement	None	WDFW is reviewing each of their fishing easements to determine exact location and potential feasibility for use.
CWN 05	None	None	

Implementation

The City will implement this shoreline public access plan through implementation of its *Wenatchee Urban Area Comprehensive Plan, 2012-2018 Parks, Recreation and Open Space Comprehensive Plan*, and the *Wenatchee Waterfront Sub-area Plan*. The City’s *2012-2018 Parks, Recreation and Open Space Comprehensive Plan* and the *Wenatchee Waterfront Sub-area Plan* include sections on implementation including costs and funding sources. As well, capital improvements and funding sources are found in the City’s budget under the capital improvement program – *Capital Facilities Plan*. The *Capital Facilities plan* is adopted each year into the *Wenatchee Urban Area Comprehensive Plan*. Lastly, along the Wenatchee Loop trail there are view access locations. An inventory of these existing view access locations has been completed from both waterward and landward of the OHWM. These view access locations are intended to be preserved.

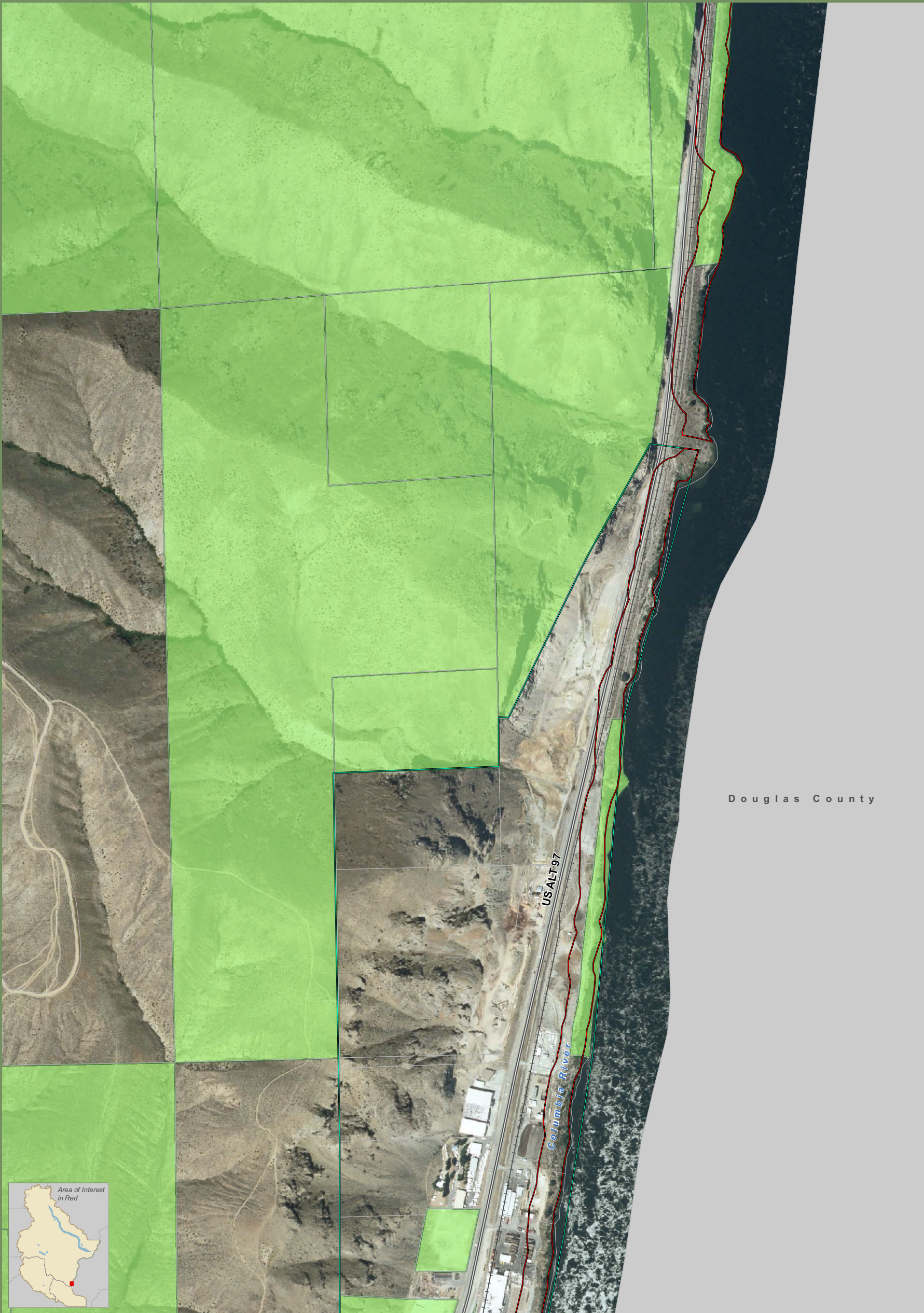
In addition, the Shoreline Master Program contains public access and recreation standards designed to be compatible with and support this shoreline public access plan.

The City may revisit this shoreline public access plan during periodic reviews of the SMP, anticipated every eight years. (RCW 90.58.080)

Supporting Maps

The following attached maps are provided for reference and in support of the shoreline public access plan:

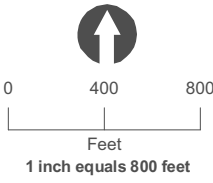
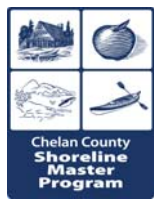
- Public Access maps prepared for the Shoreline Master Program, July 22, 2010
- 2012-2018 Parks, Recreation and Open Space Comprehensive Plan: Existing City Park and Recreation Facilities, Existing Community Parks, Existing Neighborhood Parks, Neighborhood Park Service Area, and Community Park Service Area
- Wenatchee Waterfront Sub-area Plan Concept Map, 2003



Douglas County



Public Access Wenatchee 01



July 20, 2011
Data: WA DOE,
WA OFM, TPL,
TNC, Chelan County,
WA State Parks, WNF

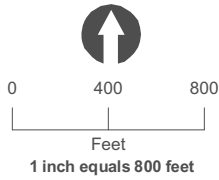
Public Access, Parks, and Other Public Lands

- | | | | |
|------------------------|----------------------|----------------------------------|-----------------|
| Boat Launch | Picnic Area | Fishing Easement | Hiking Trails |
| Campground | RV Camp | Fishing Easement with Boatlaunch | Proposed Trails |
| Comm. Dock/Marina | Ski Area | Parks | Highways |
| Fishing Access | SnoPark | Other Public and Protected Lands | Railroads |
| Horse Camp | Trailhead | Potential ROW Access | Parcels |
| Marina | Visitor Info Site | View Corridors | Jurisdiction |
| Other Boating Facility | Winter Rec. Facility | | City Boundaries |
| | | | UGA Boundaries |

Shoreline jurisdiction boundaries depicted on this map are approximate. They have not been formally delineated or surveyed and are intended for planning purposes only. Additional site-specific evaluation may be needed to confirm/verify information shown on this map.



Public Access Wenatchee 02

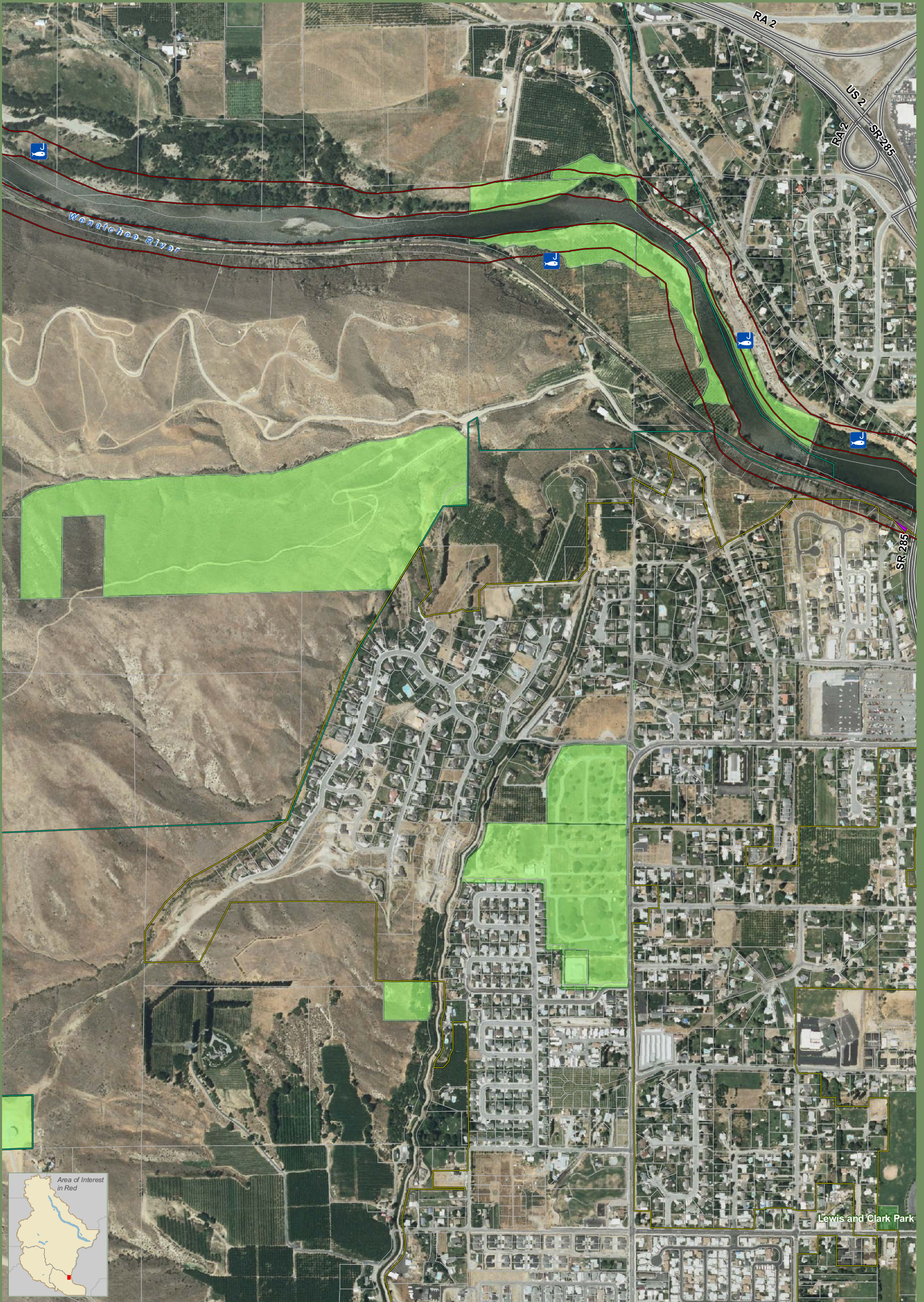


July 20, 2011
 Data: WADOE,
 WA OFM, TPL,
 TNC, Chelan County,
 WA State Parks, WNF

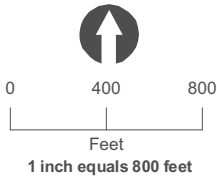
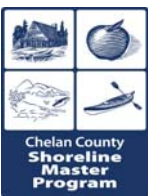
Public Access, Parks, and Other Public Lands

- | | | | |
|------------------------|----------------------|----------------------------------|-----------------|
| Boat Launch | Picnic Area | Fishing Easement | Hiking Trails |
| Campground | RV Camp | Fishing Easement with Boatlaunch | Proposed Trails |
| Comm. Dock/Marina | Ski Area | Parks | Highways |
| Fishing Access | SnoPark | Other Public and Protected Lands | Railroads |
| Horse Camp | Trailhead | Potential ROW Access | Parcels |
| Marina | Visitor Info Site | View Corridors | Jurisdiction |
| Other Boating Facility | Winter Rec. Facility | | City Boundaries |
| | | | UGA Boundaries |

Shoreline jurisdiction boundaries depicted on this map are approximate. They have not been formally delineated or surveyed and are intended for planning purposes only. Additional site-specific evaluation may be needed to confirm/verify information shown on this map.



Public Access Wenatchee 03



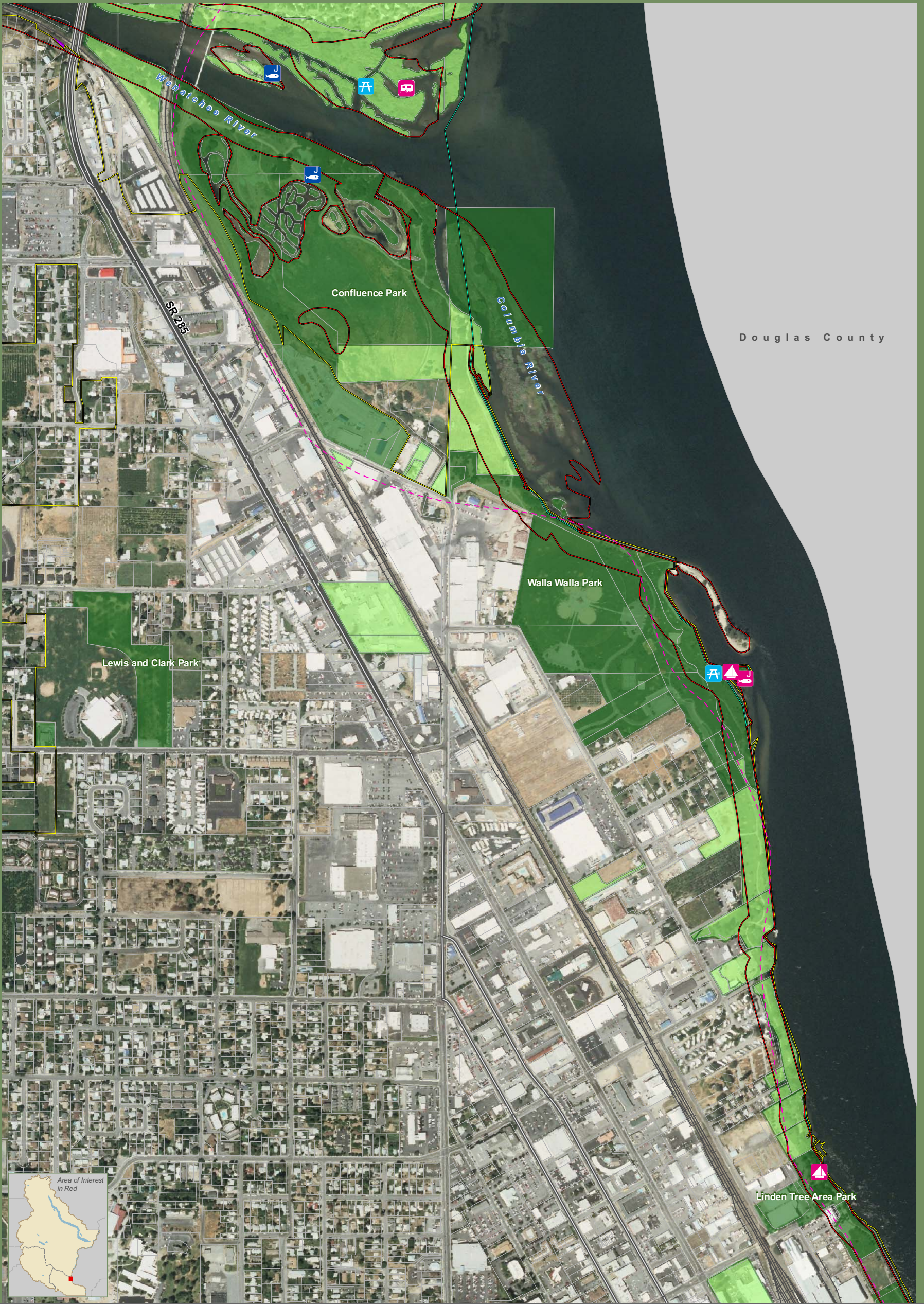
July 20, 2011
 Data: WA DOE,
 WA OFM, TPL,
 TNC, Chelan County,
 WA State Parks, WNF



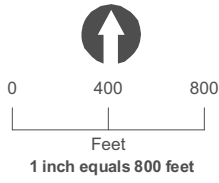
Public Access, Parks, and Other Public Lands

- | | | | |
|------------------------|----------------------|----------------------------------|-----------------|
| Boat Launch | Picnic Area | Fishing Easement | Hiking Trails |
| Campground | RV Camp | Fishing Easement with Boatlaunch | Proposed Trails |
| Comm. Dock/Marina | Ski Area | Parks | Highways |
| Fishing Access | SnoPark | Other Public and Protected Lands | Railroads |
| Horse Camp | Trailhead | Potential ROW Access | Parcels |
| Marina | Visitor Info Site | View Corridors | Jurisdiction |
| Other Boating Facility | Winter Rec. Facility | | City Boundaries |
| | | | UGA Boundaries |

Shoreline jurisdiction boundaries depicted on this map are approximate. They have not been formally delineated or surveyed and are intended for planning purposes only. Additional site-specific evaluation may be needed to confirm/verify information shown on this map.



Public Access Wenatchee 04



July 20, 2011
 Data: WA DOE,
 WA OFM, TPL,
 TNC, Chelan County,
 WA State Parks, WNF



Public Access, Parks, and Other Public Lands

- | | | | |
|------------------------|----------------------|----------------------------------|-----------------|
| Boat Launch | Picnic Area | Fishing Easement | Hiking Trails |
| Campground | RV Camp | Fishing Easement with Boatlaunch | Proposed Trails |
| Comm. Dock/Marina | Ski Area | Parks | Highways |
| Fishing Access | SnoPark | Other Public and Protected Lands | Railroads |
| Horse Camp | Trailhead | Potential ROW Access | Parcels |
| Marina | Visitor Info Site | View Corridors | Jurisdiction |
| Other Boating Facility | Winter Rec. Facility | | City Boundaries |
| | | | UGA Boundaries |

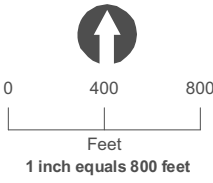
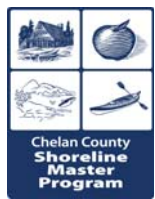
Shoreline jurisdiction boundaries depicted on this map are approximate. They have not been formally delineated or surveyed and are intended for planning purposes only. Additional site-specific evaluation may be needed to confirm/verify information shown on this map.



Douglas County



Public Access Wenatchee 05



July 20, 2011
Data: WA DOE,
WA OFM, TPL,
TNC, Chelan County,
WA State Parks, WNF

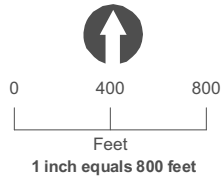
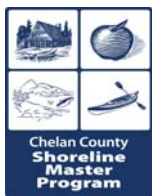
Public Access, Parks, and Other Public Lands

- | | | | |
|------------------------|----------------------|----------------------------------|-----------------|
| Boat Launch | Picnic Area | Fishing Easement | Hiking Trails |
| Campground | RV Camp | Fishing Easement with Boatlaunch | Proposed Trails |
| Comm. Dock/Marina | Ski Area | Parks | Highways |
| Fishing Access | SnoPark | Other Public and Protected Lands | Railroads |
| Horse Camp | Trailhead | Potential ROW Access | Parcels |
| Marina | Visitor Info Site | View Corridors | Jurisdiction |
| Other Boating Facility | Winter Rec. Facility | | City Boundaries |
| | | | UGA Boundaries |

Shoreline jurisdiction boundaries depicted on this map are approximate. They have not been formally delineated or surveyed and are intended for planning purposes only. Additional site-specific evaluation may be needed to confirm/verify information shown on this map.



Public Access Wenatchee 06



July 20, 2011
Data: WA DOE,
WA OFM, TPL,
TNC, Chelan County,
WA State Parks, WNF

Public Access, Parks, and Other Public Lands

- | | | | |
|------------------------|----------------------|----------------------------------|-----------------|
| Boat Launch | Picnic Area | Fishing Easement | Hiking Trails |
| Campground | RV Camp | Fishing Easement with Boatlaunch | Proposed Trails |
| Comm. Dock/Marina | Ski Area | Parks | Highways |
| Fishing Access | SnoPark | Other Public and Protected Lands | Railroads |
| Horse Camp | Trailhead | Potential ROW Access | Parcels |
| Marina | Visitor Info Site | View Corridors | Jurisdiction |
| Other Boating Facility | Winter Rec. Facility | | City Boundaries |
| | | | UGA Boundaries |

Shoreline jurisdiction boundaries depicted on this map are approximate. They have not been formally delineated or surveyed and are intended for planning purposes only. Additional site-specific evaluation may be needed to confirm/verify information shown on this map.

Figure 3.1: Existing City Park and Recreation Facilities

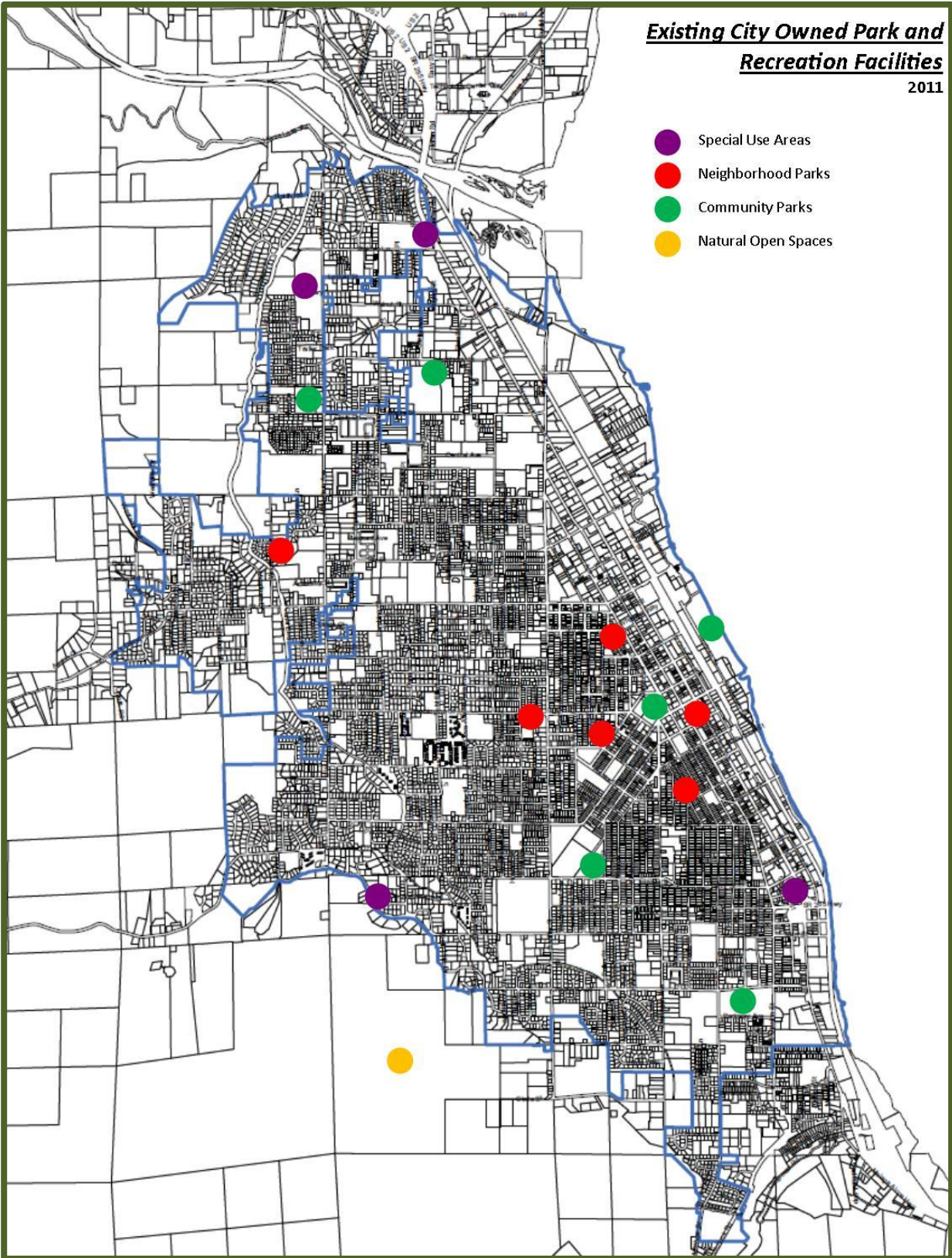


Figure 3.1.2: Existing Community Parks

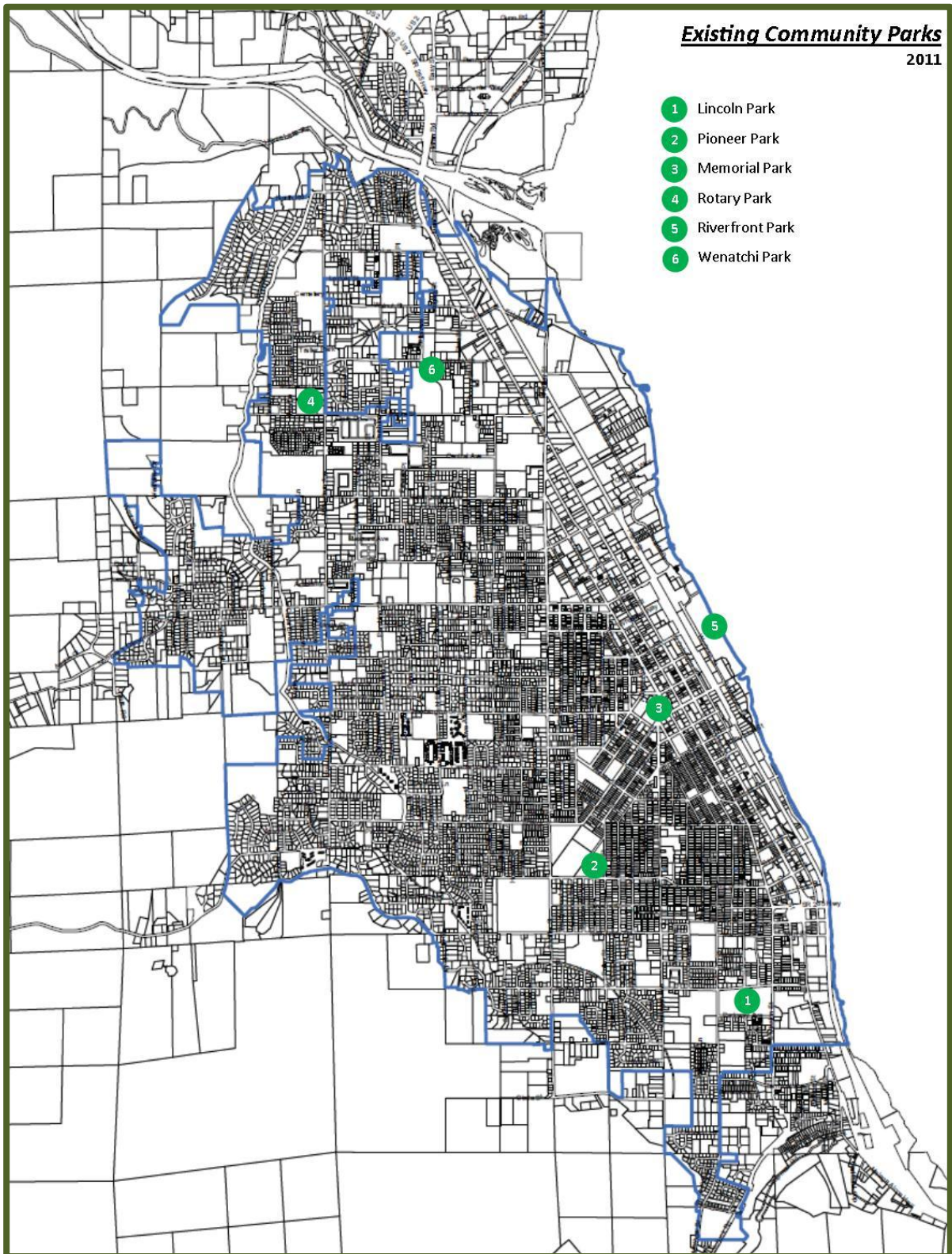


Figure 3.1.1: Existing Neighborhood Parks

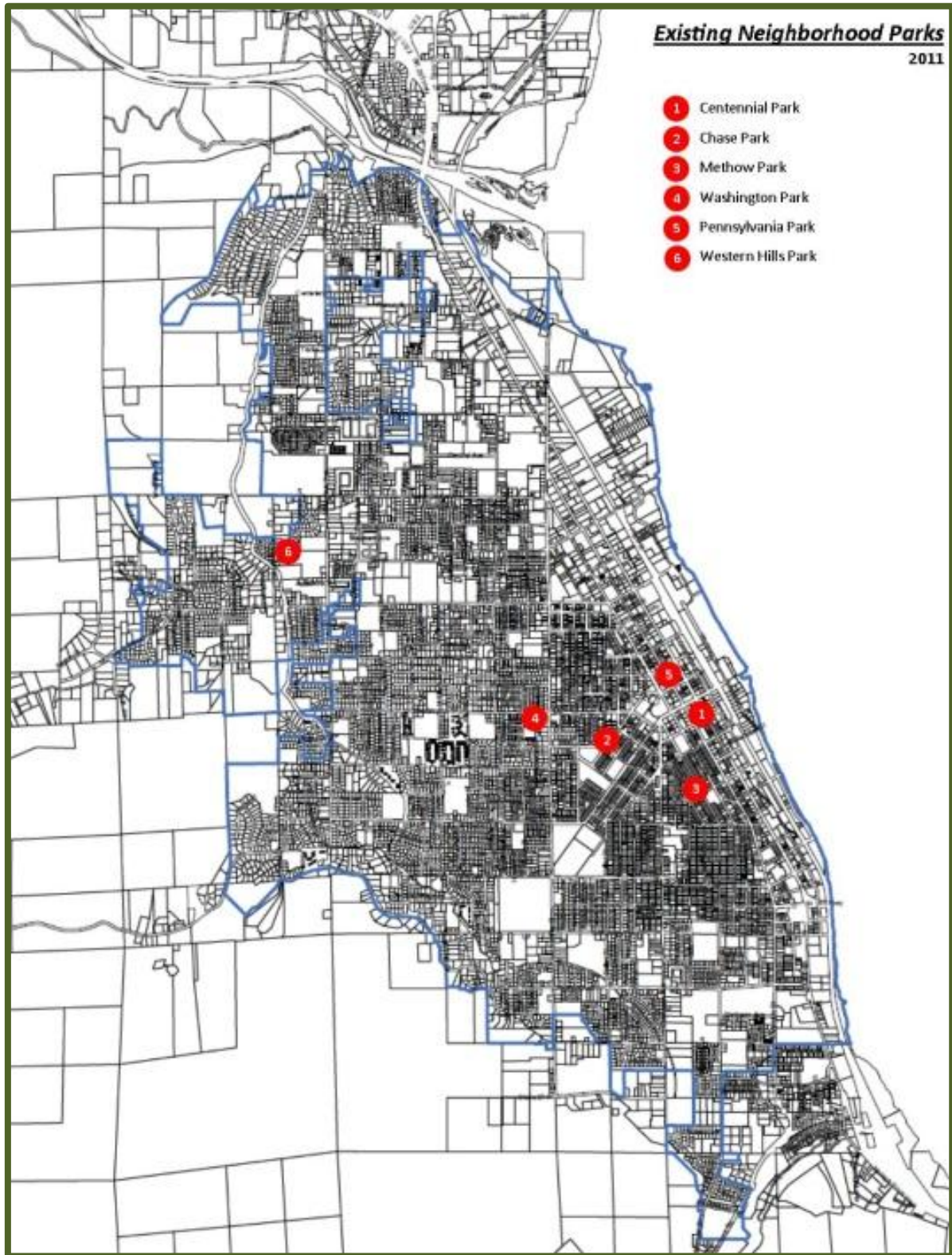


Figure 4.1.1: Neighborhood Park Service Area Map

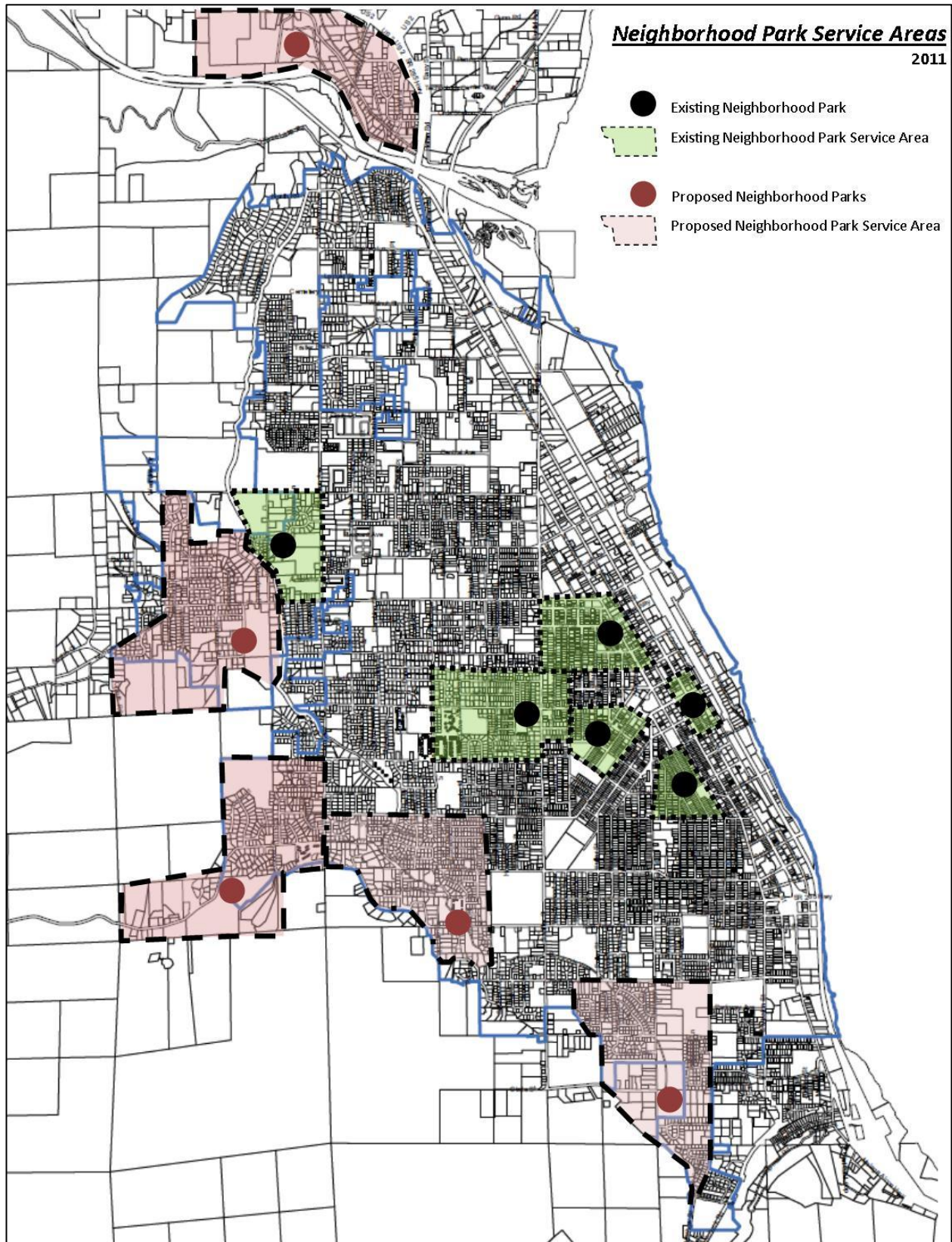
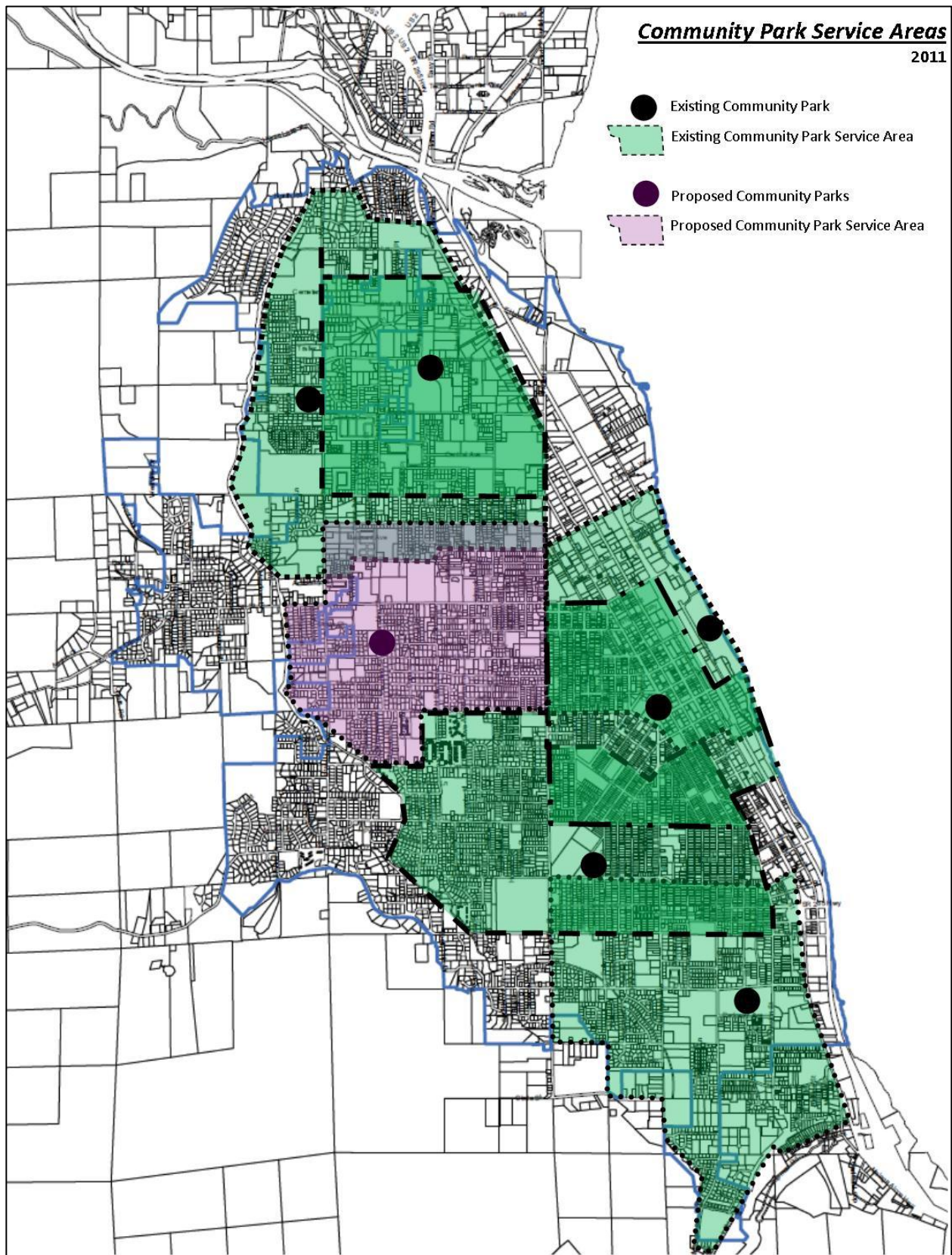


Figure 4.1.2: Community Park Service Area Map



Plan Concept

The consultant team first identified the desired types of development through a public process. Citizens wanted to create a variety of development opportunities, so the following plan concept was developed to provide a focused vision for future development.

North Node

Integrate new residential neighborhood with recreational development

Short- to Mid-term:

- Coordinated residential and commercial recreation development

Mid- to Long-term:

- Walla Walla Road/Hawley Road connection to Wenatchee Avenue
- Office/residential and environmental center north of Hawley Road

Central Node

Create recreational/retail/mixed-use focus with park attractions

Short- to Mid-term:

- Riverside Drive connector road
- Farmer's Market
- Amphitheater
- Non-motorized boat center

Mid- to Long-term:

- Mixed-use development with hotel

South Node

Build on boating activity and proximity to downtown

Short- to Mid-term:

- Day-use moorage dock
- Thurston Street improvements
- Restaurant

Mid- to Long-term:

- Worthen Street improvements
- Reconfigured Orondo Street
- Mixed-use development
- Improved trail to south
- Water playground
- Relocate Publicworks



Figure 2. Concept Illustration