

Stormwater Management Program



2025



Acronyms and Abbreviations

BMP	Best Management Practice
Ecology	Washington State Department of Ecology
EPA	Environmental Protection Agency
FTE	Full Time Employee
IDDE	Illicit Discharge Detection and Elimination
MS4	Municipal Separate Storm Sewer System
NPDES	National Pollutant Discharge Elimination System
O&M	Operation and Maintenance
Permit	Eastern Washington Phase II Municipal Stormwater Permit
SWMP	Stormwater Management Program
TESC	Temporary Erosion and Sedimentation Control
TMDL	Total Maximum Daily Load
UIC	Underground Injection Control
WVSTAC	Wenatchee Valley Stormwater Technical Advisory Committee

Table of Contents

1.0	Introduction and Background	1
2.0	Stormwater Utilities.....	1
2.1	Chelan County.....	1
2.2	City of Wenatchee and Wenatchee Valley College.....	2
2.3	Douglas County and City of East Wenatchee.....	2
3.0	Permit Coverage Area	2
4.0	NPDES Phase II Permit SWMP Requirements	6
4.1	Public Education and Outreach.....	6
4.2	Public Involvement and Participation	6
4.3	Illicit Discharge Detection and Elimination	6
4.4	Construction Site Stormwater Runoff Control	7
4.5	Post-construction Stormwater Management for New Development and Redevelopment	7
4.6	Municipal Operations and Maintenance	7
4.7	Other Permit Requirements.....	7
4.7.1	Total Maximum Daily Load Requirements.....	8
4.7.2	Monitoring.....	8
4.7.3	Reporting Requirements.....	8
4.8	Implementation Schedule.....	8

List of Exhibits

Exhibit 1	Wenatchee Valley Stormwater Permit Boundaries	6
Exhibit 2	City/County NPDES Phase II Timeline	9
Exhibit 3	Wenatchee Valley College NPDES Phase II Timeline.....	10

Appendices

Appendix A	Stormwater Management Program Plan
Appendix B	Public Education and Outreach and Public Involvement and Participation
Appendix C	Illicit Discharge Detection and Elimination
Appendix D	Construction Site Stormwater Runoff Control
Appendix E	Post-Construction Stormwater Management for New Development and Redevelopment
Appendix F	Municipal Operations & Maintenance
Appendix G	Monitoring and Assessment
Appendix H	Annual Reports
Appendix I	Local Stormwater Regulations

Wenatchee Valley Stormwater Management Program

1.0 Introduction and Background

In 1999, the Environmental Protection Agency (EPA) introduced Phase II of the National Pollutant Discharge Elimination System (NPDES) program requiring a permit for stormwater discharges to certain municipal separate storm sewer systems (MS4s) and construction sites greater than one acre of land. In Washington State, the Department of Ecology (Ecology) was delegated authority to administer the NPDES program on behalf of the EPA.

On January 17, 2007, Ecology issued the first Eastern Washington Phase II Municipal Stormwater Permit (hereinafter referred to as “permit”) which authorized permittees to discharge to waters in Washington in accordance with the Clean Water Act and the State of Washington Water Pollution Control Act. As owners and operators of regulated small MS4s, Douglas County, Chelan County, City of Wenatchee, and City of East Wenatchee were required to obtain coverage under the first permit. In 2012, Wenatchee Valley College was notified that coverage was required as a secondary permittee. On August 1, 2012 the first permit was reissued without any changes for a period of two years and Ecology issued the revised Eastern Washington Phase II Municipal Stormwater Permit which was effective August 1, 2014 through July 31, 2019. On August 1, 2024 Ecology issued the newest version of the permit, which will be effective August 1, ~~2019-2024~~ through July 31, ~~2024-2029~~. Each jurisdiction is permitted separately with the exception of the City of Wenatchee and Wenatchee Valley College. The college and the city completed an interlocal agreement in July 2013 to be covered under the permit as co-permittees. The college and the City have continued the interlocal agreement to remain covered under the permit issued August 1, ~~2019-2024~~ as co-permittees.

The Wenatchee Valley Stormwater Advisory Committee (WVSTAC) was formed in 2004 during the development of the first permit. The committee, which is comprised of agency representatives from Douglas County, Chelan County, City of Wenatchee, and City of East Wenatchee was formed under an interlocal agreement and has worked to develop and implement a regional stormwater management program.

The permit requires that the stormwater management program be documented in a plan. The SWMP plan is required to contain documentation of the following program components:

- Public Education and Outreach
- Public Involvement and Participation
- Illicit Discharge Detection and Elimination
- Construction Site Stormwater Runoff Control
- Post-Construction Stormwater Management for New Development and Redevelopment
- Municipal Operations and Maintenance
- Compliance with Total Maximum Daily Load Requirements
- Monitoring & Assessment

2.0 Stormwater Utilities

2.1 Chelan County

Chelan County’s stormwater utility was created in 2008 to manage stormwater needs in the developing areas around the City of Wenatchee. The utility is funded through a service fee on all developed properties containing impervious surfaces. In December of 2012, the Board of Chelan County Commissioners adopted the 2012 Comprehensive Stormwater Plan.

2.2 City of Wenatchee and Wenatchee Valley College

The City of Wenatchee's separate municipal stormwater system consists of approximately 75 miles of stormwater mains, 12 outfalls to the Columbia River, and 34 water quality facilities. The City's stormwater utility was established in 1994 to fund capital improvement projects and maintenance of the stormwater system. Today the stormwater utility also funds implementation of the stormwater management program. The Wenatchee Valley College campus is located within the City of Wenatchee's stormwater utility boundary and covers approximately 52 acres.

2.3 Douglas County and City of East Wenatchee

In 1998, the City and Douglas County established separate Stormwater Utilities by adopting Ordinances 98-07 and TLS 98-10-21B, respectively. Later that year, the City and County executed an interlocal agreement which established joint operating procedures and created the "Greater East Wenatchee Storm Water Utility" (GEWSWU). In 2019, The City and County mutually agreed to terminate the GEWSWU and began operating separate utilities as of January 1st, 2020. The utility's provide funding for the construction of needed storm water improvements, as well as operation and maintenance of all existing and planned storm water facilities.

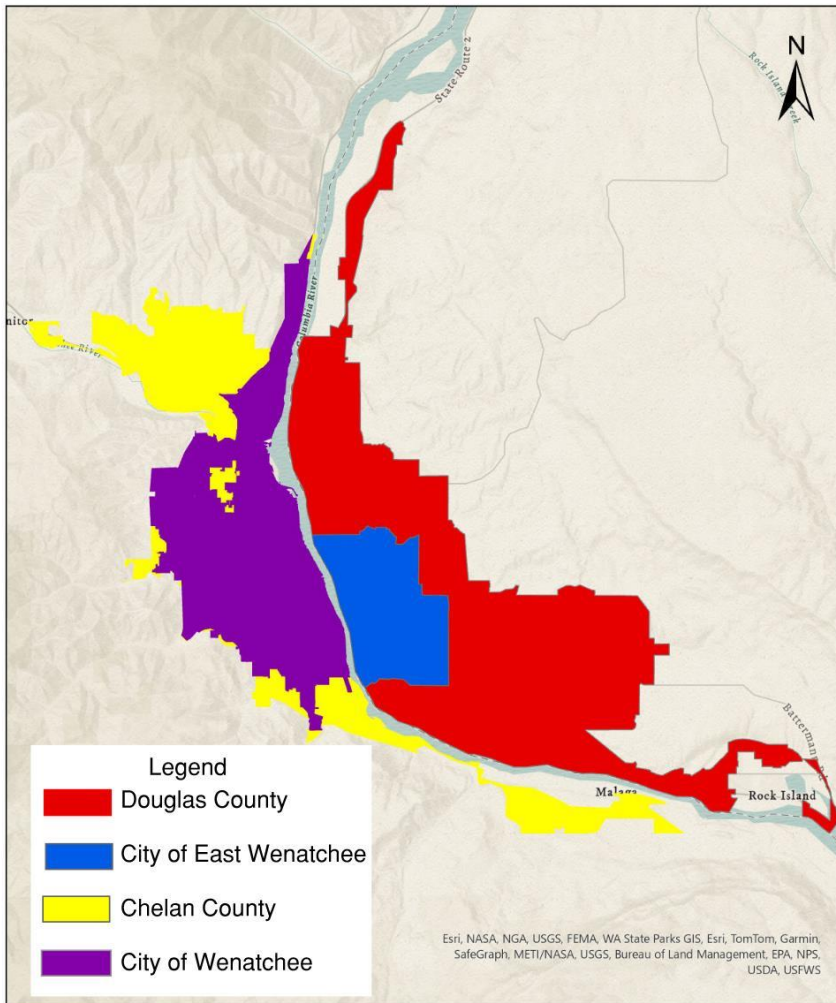
3.0 Permit Coverage Area

The permit is applicable to owners or operators of regulated small MS4s located in eastern Washington State. For all cities required to obtain coverage under this permit, the permit coverage area is the entire incorporated area of the city. For all counties required to obtain coverage under this permit, the permit coverage area is the urbanized areas and the urban growth areas associated with cities within the urbanized areas that are under the jurisdictional control of the county. The geographic area of coverage also includes any urban growth areas that are contiguous to urbanized areas under County jurisdictional control. To assure compliance with Federal and State stormwater requirements as specified in the Clean Water Act and the National Pollutant Discharge Elimination System Phase II regulations, Chelan County and Douglas County were required to update their utility service areas in 2014 as result of the 2010 Census data conducted by the U.S. Census Bureau.

The permit coverage areas for Douglas County, City of East Wenatchee, Chelan County, and City of Wenatchee, ("Cities and Counties") are shown in Exhibit 1. The city limits of Rock Island were excluded from the permit coverage area because, at the time of Ecology's decision, the City did not have a population of 1,000. The urban growth area and census defined urban area for Rock Island, however, are included in Douglas County's permit coverage area.

Exhibit 1

Wenatchee Valley Municipal Stormwater Permit Boundaries



4.0 NPDES Phase II Permit Requirements

The Cities and Counties have developed a regional stormwater management program that consists of collaborative efforts among the jurisdictions in addition to individual activities to meet permit requirements. Program activities are defined in terms of regional, semi-regional, and local efforts:

- Regional efforts are collaborative efforts between the four jurisdictions or have shared funding arrangements between the four jurisdictions
- Semi-regional efforts are collaborative efforts between jurisdictions or have shared funding arrangements between two or three of the jurisdictions
- Local efforts are completed individually by each jurisdiction.

The Stormwater Management Program Plan can be found in Appendix A.

4.1 Public Education and Outreach (Permit Requirement S5.B.1)

The Public Involvement, Education, and Outreach Plan describes the activities for complying with the Sections S5.B.1 and S5.B.2 (provided in Appendix B). The public education and outreach activities are primarily regional efforts. The WVSTAC maintains a target audience lists and each year looks at what types of education are needed based on illicit discharge complaints, public feedback and permit requirements. The regional website (www.wenatcheeva.gov/wvstac) is used to provide educational information on stormwater pollution prevention. The WVSTAC also provides educational information at public facilities, community events and occasionally sends information by mail. ~~Other public education and outreach components include storm drain stenciling and media involvement.~~ Details of these activities, as well as an implementation schedule, are provided in Appendix B.

4.2 Public Involvement and Participation (S5.B.2)

In 2008, the WVSTAC organized the Wenatchee Valley Stormwater Program Development Steering Committee. The committee consists of elected officials, local business owners, engineers, real estate agents, developers, home builders, citizens and environmental groups. The purpose of this group is to provide an opportunity to provide feedback on the regional stormwater management program. Public meetings, open houses, community events and the regional website are also used to gather input from the public. More details can be found in the Public Involvement, Education and Outreach Plan in Appendix B.

4.3 Illicit Discharge Detection and Elimination (S5.B.3)

The WVSTAC has developed a regional Illicit Discharge Detection and Elimination (IDDE) program to detect and address non-stormwater discharges to the MS4, which is provided in Appendix C. The IDDE program is comprised of the following measures to address permit requirements:

- **MS4 Mapping and Outfalls:** Maps of the MS4 assure that illicit discharges and spills can be traced upstream for source detection. Maps also aid in identifying the downstream fate of non-stormwater discharges.
- **Illicit Discharge Detection Plan:** A regional illicit discharge detection plan to find, identify, and eliminate unknown pollutant discharges to the storm drainage system (Appendix C).
- **IDDE Ordinance or Resolution:** The Cities and Counties adopted consistent IDDE rules in 2009 to prohibit certain non-stormwater discharges into the MS4. The ordinances and resolutions can be found in Appendix ~~14~~.

- **Enforcement:** Based on the local ordinance or resolution, each City and County has developed an Enforcement Action Plan. Enforcement of ordinances and resolutions is handled locally, though some issues do involve both the city and county.
- **Public Education and Outreach:** As part of the regional Public Involvement, Education, and Outreach Plan, the WVSTAC provides educational information to targeted audiences on illicit discharges and stormwater pollution prevention. A key component of the educational materials is the stormwater hotline. The City of Wenatchee ~~and Chelan County each have their own hotline, while the City of East Wenatchee and Douglas County share a hotline.~~ Chelan County, Douglas County and the City of East Wenatchee all have their own hotline.
- **Staff Training:** General training for City and County municipal staff (including office and field staff) responsible for the identification, investigation, termination, cleanup, and reporting of illicit discharges, is developed and administered regionally whenever possible. Enforcement training specific to the Cities and Counties will be given to staff at the local level.

The IDDE program is evaluated annually and a summary of the program activities is included in the jurisdictions' annual reports. The IDDE program is assessed using information from illicit discharge/spill reports, inspections reports, and feedback from public education efforts.

4.4 Construction Site Stormwater Runoff Control (S5.B.4)

The goal of the construction site stormwater runoff control program is to reduce pollutants in stormwater runoff from construction activities that disturb one acre or more, and from construction projects of less than one acre that are part of a common plan of development or sale. The regional construction site runoff control program that addresses the requirements of the permit is provided in Appendix D1.

In 2010 the Cities and Counties adopted construction site stormwater ordinances or resolutions which became effective in February 2011(Appendix H). The ordinances/resolutions require erosion and sediment controls in compliance with the most current version of the Stormwater Management Manual for Eastern Washington and other construction-phase stormwater pollution controls at new development and redevelopment projects. The Enforcement Action Plan prepared for the IDDE program will also be followed for the construction site stormwater runoff control ordinance.

4.5 Post-construction Stormwater Management for New Development and Redevelopment (S5.B.5)

The post-construction stormwater runoff management program for new development and redevelopment projects was developed in conjunction with the construction site stormwater runoff control requirements. Projects that meet the criteria for construction site stormwater runoff management must also install and maintain best management practices to provide long-term water quality and flow control. Detailed information on this program element can be found in Appendix D2E.

4.6 Municipal Operations and Maintenance (S5.B.6)

The Cities and Counties developed a regional operations and maintenance plan template under a grant from Ecology in 2010 and completed their individual plans early in 2011 (Appendix F). The operations and maintenance plans were required to include best management practices and procedures for preventing stormwater pollution from municipal activities such as streets, stormwater conveyance and treatment systems, parks, municipal buildings, fleets, and construction projects. Staff

training ~~has been~~is conducted on a regional basis whenever possible.

4.7 Other Permit Requirements

In addition to the required SWMP, the permit contains additional requirements, which are outlined below.

4.7.1 Total Maximum Daily Load Requirements (S7)

A TMDL, or total maximum daily load, is the maximum amount of pollutant that a water body can receive and without exceeding water quality standards. In Washington State, "TMDL" also refers to the planning process where water bodies that do not meet water quality standards are studied and strategies to reduce pollutants are developed and implemented. The TMDL for the Wenatchee River is the only active TMDL process in the Cities' and Counties' permit coverage area affecting storm drainage. The City of Wenatchee and Chelan County will address this TMDL and participate in future TMDL development as a semi-regional effort. The City and County will develop specific BMPs to address discharges into the Wenatchee River for affected basins. East Wenatchee and Douglas County will participate in future TMDL development individually, as necessary.

4.8.2 Monitoring and Assessment (S8)

Under the first permit, the Cities and Counties developed a regional monitoring plan that was submitted to Ecology in 2010 (~~Appendix F~~). ~~During development of the current permit, Ecology developed a new approach to monitoring.~~ The permit effective August 1, 2014, required~~s~~ that each City and county collaborate with other permittees to develop and implement "Stormwater Management Program Effectiveness Studies." The City of Spokane Valley received funding from Ecology to lead a process to develop effectiveness study ideas for Eastern Washington.

In 2016, Ecology ranked a list of fourteen effectiveness studies ideas. The Wenatchee Valley completed an effectiveness study to evaluate the effectiveness of the education and outreach effort specifically related to the Dump Smart program, which was implemented in 2010. During the 2019-2024 permit cycle, the Wenatchee Valley completed an effectiveness study to evaluate the education and outreach programs associated with privately owned stormwater BMPs. The current permit cycle provides options for permittees to comply with the S8. Monitoring and Assessment requirements, Permittees may choose to complete a regional effectiveness study, join the Stormwater Action Monitoring Collective, or complete Stormwater Discharge Monitoring. The WVSTAC has chosen to complete a Regional Effectiveness Study. Details of the Wenatchee Valley Monitoring and Assessment program can be found in Appendix G. ~~The effectiveness study proposed by the Wenatchee Valley evaluated the effectiveness of the education and outreach effort for mobile contractors, specifically related to the Dump Smart program, which was implemented in 2010. The proposed effectiveness study was ranked fourth, and the Wenatchee Valley implemented the study beginning in 2018. The permit effective August 1, 2019, requires permittees to continue participation in ongoing effectiveness studies and participate in a study for the new permit as a lead entity, by contributing staff time or other in-kind services, or by providing funding.~~

4.8.3 Reporting Requirements (S9)

Each jurisdiction individually prepares the annual report using a template provided by Ecology. No later than March 31 of each year beginning in ~~2020~~2025, each permittee must submit an annual report. The reporting period for the first permit will be January 1, ~~2019-2024~~ through December 31, ~~2019~~2024. For regional efforts, the lead City or County for a particular activity will provide the other jurisdictions with information to be included in their individual annual reports. Each City and County currently has a system to track SWMP activities and expenditures.

4.9 Implementation Schedule

Exhibit [14](#) shows the NPDES Phase II Timeline for the Cities and Counties for the new permit effective August 1, ~~2019~~ [2024](#) and Exhibit [5-2](#) shows the timeline for Wenatchee Valley College.

Exhibit 2

Eastern Washington Phase II Municipal Stormwater Permit Implementation Timeline (2024-2029)

Below is the implementation timeline for requirements in the permit that is effective August 1, ~~2019-2024~~ through July 31, ~~2024-2029~~

Program Component	12/1/2024	12/31/2024	6/30/2025	3/31/2026	6/30/2026	12/31/2026	1/1/2027	3/31/2027	6/30/2027	7/1/2027	12/31/2027	3/31/2028	12/31/2028
<u>S.1</u> <u>Permit Coverage & Permittees</u>													
<u>S.5</u> <u>Stormwater Management Program For Cities, Counties, and Towns</u>				<u>Coordination Mechanism between departments due</u> (S5.A.5.b)				<u>Track Program Costs & Submit with Annual Report</u> (S5.A.3.a.ii)					
<u>S5.B.1</u> <u>Public Education & Outreach</u> <u>S5.B.2</u> <u>Public Involvement & Participation</u>						<u>Measure Understanding & Adoption of Behavior</u> (S5.B.1.b) <u>Document methods of ID-ing overburdened communities</u> (S5.B.2.a.ii)	<u>Begin to provide partner & promote stewardship activities</u> (S5.B.2.c)						
<u>S5.B.3</u> <u>Illicit Discharge Detection & Elimination</u>				<u>Submit locations of all known outfalls</u> (S5.B.3.a.viii)		<u>Map Tree Canopy</u> (S5.B.3.a.ix) <u>Coordinate with Fire Department (PFAS)</u> (S5.B.3.d.ii(a))	<u>Implement procedures for post-emergency response</u> (S5.B.3.d.iii(b))			<u>Update Regulatory Mechanism</u> (S5.B.3.b)	<u>Map tributary conveyance to known outfalls</u> (S5.B.3.a.x)		
<u>S5.B.4</u> <u>Construction Site Stormwater Runoff Control</u> <u>S5.B.5</u> <u>Post-Construction Stormwater Management for New & Re-Development</u>									<u>Update regulatory mechanisms</u> (S5.B.4.a) (S5.B.5.a)				
<u>S5.B.6</u> <u>Municipal Operations & Maintenance</u>		<u>All catch basins and inlets must be inspected</u> (S5.B.6.a.ii(b))							<u>Update O&M Plan</u> (S5.B.6.b)	<u>Develop & Implement Street Sweeping Program</u> (S5.B.6.b)		<u>Submit Street Sweeping information with Annual Report</u> (S5.B.6.b.v)	
<u>S.8</u> <u>Monitoring & Assessment</u>	<u>Notify Ecology of Effectiveness Study option Chosen</u> (S8.B.2)		<u>Submit study description to Ecology w/ Participants</u> (S8.C.3)		<u>Submit Detailed Study Design to Ecology</u> (S8.C.4)	<u>Submit QAPP to Ecology</u> (S8.C.5)			<u>Begin to Conduct Study</u> (S8.C.6)				<u>Adopt & implement tree canopy goals & policies</u> (S8.A)

Formatted: Font:
Formatted: Normal, Indent: Left: 0", First line: 0", Right: 0", Space Before: 0 pt, Line spacing: single

Formatted: Left

Exhibit 2

Eastern Washington Phase II Municipal Stormwater Permit Implementation Timeline for Secondary Permittees (2024-2029)

The permit effective **2024-2029** does not have any specific implementation deadlines for secondary permittees, below are the activities required by the permit with timelines for continued implementation.

Program Component	Required Activities
Stormwater Management Program (SWMP) (S6.A)	Continue to develop and implement Stormwater Management Program Document
Public Education & Outreach (S6.D.1) Public Involvement & Participation (S6.D.2)	Label storm drain inlets – Replace any faded/ unclear storm drain labels within 90 days of being determined unreadable Each year- distribute educational materials on campus No later than March 31 each year, Annual Report must be uploaded to website
Illicit Discharge Detection & Elimination (S6.D.3)	December 31, 2026: Required format for mapping is electronic with fully described mapping standards. March 31, 2027: Submit locations of all known MS4 outfalls according to the standard templates and format provided in the annual report. On Going: Implement appropriate processes and procedures prohibiting illicit discharges Visually inspect at least one third of known outfall and discharge points Provide training for staff
Construction Site Stormwater Runoff Control (S6.D.4) Post-Construction Stormwater Management for New Development and Redevelopment (S6.D.5)	Comply with state and local construction/post-construction stormwater requirements (S6.D.4.a) Ensure all construction projects under the functional control of the permittee which require a Construction Stormwater General Permit, obtain one Coordinate with jurisdiction for permitted construction sites Provide Training
Municipal Operations & Maintenance	Continue to implement an O&M plan and training for staff (S6.D.6)

Formatted: Font: 8 pt

Formatted Table

Formatted: Centered, Indent: Left: 0.01"

Formatted: Centered, Indent: Left: 0.01", Space Before: 0 pt

Formatted: Centered

Formatted: Font: 8 pt

Formatted: Left