



We are looking for an **efficient and collaborative capital project engineering super star**, in our beautiful City of Wenatchee for the essential position of...

## PROJECT ENGINEER or STAFF ENGINEER, DOQ

Project Engineer ANNUAL SALARY RANGE: \$95,730 - \$117,468

Staff Engineer ANNUAL SALARY RANGE: \$79,063 - \$97,017

EXCELLENT BENEFITS: M/D/V, FSA/HSA, PERS, Deferred Comp Match, Life/AD&D, Generous PTO/Holidays

### Position Summary

**Project Engineer (PE Required):** Oversees and performs project management of major Public Works transportation and utilities projects including design, right-of-way acquisition and construction. Prepares complex plans and specifications requiring the application of advanced engineering knowledge. Monitors project budgets and ensures expenditures remain within budget guidelines. Prepares and manages consultant agreements for various services including design, surveying, environmental, right-of-way acquisition, construction inspection and other project services.

**Staff Engineer (EIT Required):** Performs Civil engineering work for the development, design and construction of capital projects. Performs construction inspection and documentation. Develops design and contract documents. Prepares legal descriptions for rights-of-way, easements, annexations, LID's, etc. Develops exhibits and schedules open houses to inform, receive feedback and educate the public on the plans and details of assigned projects.

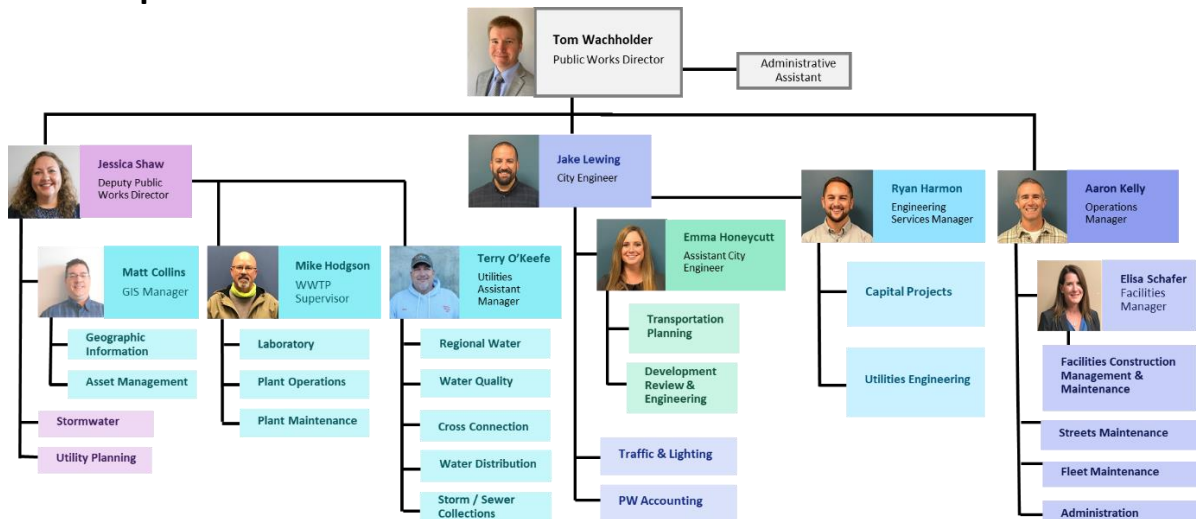
The City of Wenatchee is a medium sized city with large sized capital improvement projects. We have exciting projects on the horizon. One of the most exciting is a \$183M transportation project that will span over the next several years.

Below are some of the projects the person in this position may be assigned to work on:

- Apple Capital Loop Projects: Confluence Parkway (\$183M), South End Ped/Bike Access Bridges (\$11.5M), North Wenatchee Corridor Improvements (\$18M).
- Construction of a new shared use trail (\$2.4M) .
- Construction of transportation corridor upgrades (\$2.5M).
- Annual Pavement Preservation and ADA upgrades (\$2M).
- Water Quality Stormwater Basin Improvements (\$1.5M).
- Water Main and Sewer Main Replacement Projects.
- Water Quality Renovation, Outfall Retrofit, Canyon Drain.
- RRFB's and other Pedestrian Improvements.
- Traffic Signal Install; Roundabout Construction.
- Pavement Management Program.

With the depth of knowledge and combined 150 years of engineering experience, you have a unique opportunity to join a diverse, elite and collaborative team dedicated to maintaining and improving our City's infrastructure through the delivery of transportation and utility projects!

### Public Works Department



## City of Wenatchee Government

The City of Wenatchee is a full-service City employing 190 employees. In addition to Public Works, other departments include Police, Community Development, Parks, Recreation and Cultural Services, Finance, Human Resources and Information Services. The City operates under a Strong Mayor form of government with seven council members. Active boards and commissions advise the City Council with governance.

## The Community

The City of Wenatchee is home to 34,741 people with 116,178 living in the greater Wenatchee area. Located in a beautiful valley at the confluence of the Wenatchee and Columbia Rivers and on the east slopes of the Cascade Mountain Range, the city enjoys abundant sunshine with four distinct seasons. The average rainfall is a mere 10 inches



per year making the region a focal point of Washington State for outdoor recreation. Wenatchee is the largest city in rural North Central Washington and thus provides a small-town atmosphere with big city amenities striking a great balance between rural and urban qualities of life.

## Why Wenatchee is Such an Attractive Place to Live and Work



The City is surrounded by the Cascade foothills. These foothills have been largely preserved as open space with trail systems for public use. The City also has a wonderful historic downtown area adjoining a world class waterfront park and trail system. Renowned resort towns of Leavenworth and Lake Chelan are a scenic 30-minute drive away. Wenatchee serves as a medical, retail, technology, governmental and professional service hub for the largely agricultural area of North Central Washington. Combining these core regional services with a strong fruit and

wine agricultural industry yields a relatively stable economy. Many people have moved to our valley to take advantage of the outdoor recreation mecca and beautiful natural environment that makes the City an amazing place to live. People moving to Wenatchee find that the citizens are very community minded with many active service organizations. Additionally, public parks, quality arts programs and cultural experience opportunities are more plentiful than comparably sized cities. Suburban sprawl is nearly non-existent and thus commute times rarely exceed 15 minutes. For those desiring occasional amenities of major metropolitan areas, Seattle is a short scenic 3-hour drive or 30-minute flight away making Wenatchee very attractive to many people and families relocating from the Puget Sound area.



## How to Apply

To view the job description and complete an online application please visit:

<https://www.governmentjobs.com/careers/wenatcheewa>

## Open Until Filled

**Applications Reviewed Upon Receipt**

## A Comprehensive View of our Region



Find out more about the City at [www.wenatchewa.gov](http://www.wenatchewa.gov).

Tourism highlights of the region can be viewed at [www.visitwenatchee.org](http://www.visitwenatchee.org), [www.visitchelancounty.com](http://www.visitchelancounty.com) and [www.wenatchee.org](http://www.wenatchee.org).

### **Must See:**

"We Are Wenatchee Part I"

<https://vimeo.com/88411706>

"We Are Wenatchee Part II"

<https://vimeo.com/121429638>

"We Are Wenatchee Part III"

<https://vimeo.com/208608170>

Our historic downtown is a nationally recognized Main Street with an active downtown association [www.wenatcheedowntown.org](http://www.wenatcheedowntown.org).



# Apple Capital of the World



Many people have moved to our valley over the last decade to take advantage of the outdoor recreation mecca and beautiful natural environment that makes the City an amazing place to live!

## Forbes

Best Places to Retire. "Columbia River town 150 miles east of Seattle. Good air quality. Low serious crime rate. Walkable. No state income tax. Elevation 800 feet. Self-styled "Apple Capital of the World."



The City of Wenatchee was mentioned on the CBS Early Morning Show as one of the top five places to retire in the nation.



"AARP The Magazine" featured the City of Wenatchee as one of "10 Affordable Cities for Retirement."



"Sunset" magazine featured the Wenatchee Valley as "Washington's Gourmet Valley."

## Northwest Travel

"Northwest Travel" features Highway 2 "electrifying" in an article titled "Get a Charge on the 'Electric Highway'".



Wenatchee ranked as one of the best cities in the U.S. for postgraduates to move to and start a career according to Lend EDU's report. Analyzing over 30,000 cities based on factors deemed important to postgraduates.



CountryHome

Country Home magazine, in conjunction with Sperling's Best Places, reveals that Wenatchee, WA is #5 in the Best Green Place to live in America. The City of Wenatchee is dedicated to teaching young people about alternative energy resources.

## The New York Times

The New York Times ranked Wenatchee, WA as #4 in their study on safest places from Natural Disasters.



A safe, secure environment in which to live, work and raise a family is of utmost importance to many Americans. Wenatchee ranked #6 among similar sized metro areas. And #16 in Best Emerging Places to Live.



*The City of Wenatchee is proud to be an equal opportunity employer. Our objective is to provide equal opportunity in all terms, conditions and privileges of employment for qualified applicants and employees without regard to race, creed, color, religion, national origin, sexual orientation, gender, gender identity, age, marital status, disability, veteran or military status, or any other characteristic protected by law.*

