



Saddle Rock Accessible Trail: Draft Conceptual Plan

Presenters



Ryan Graig (He/Him)
Trails Project Manager
Chelan-Douglas Land Trust
ryan@cdlandtrust.org



Erin Keeley (She/Her)
Accessibility Consultant
Erin Keeley Consulting
erin.keeley.consulting@gmail.com

Intro: Saddle Rock Planning Process

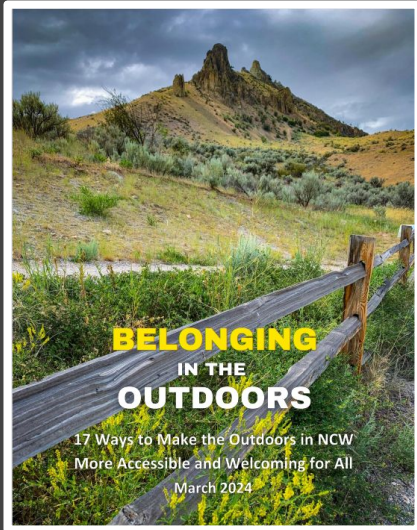
Community survey results:

- Wider trails that are less steep
- Sustainable improvements to existing steep trails
- Specific trails for specific uses (horse trails, bike trails, family trails, etc.)
- Improved maintenance
- Signage
- Visitor education
- More amenities
- Build or authorize more trails

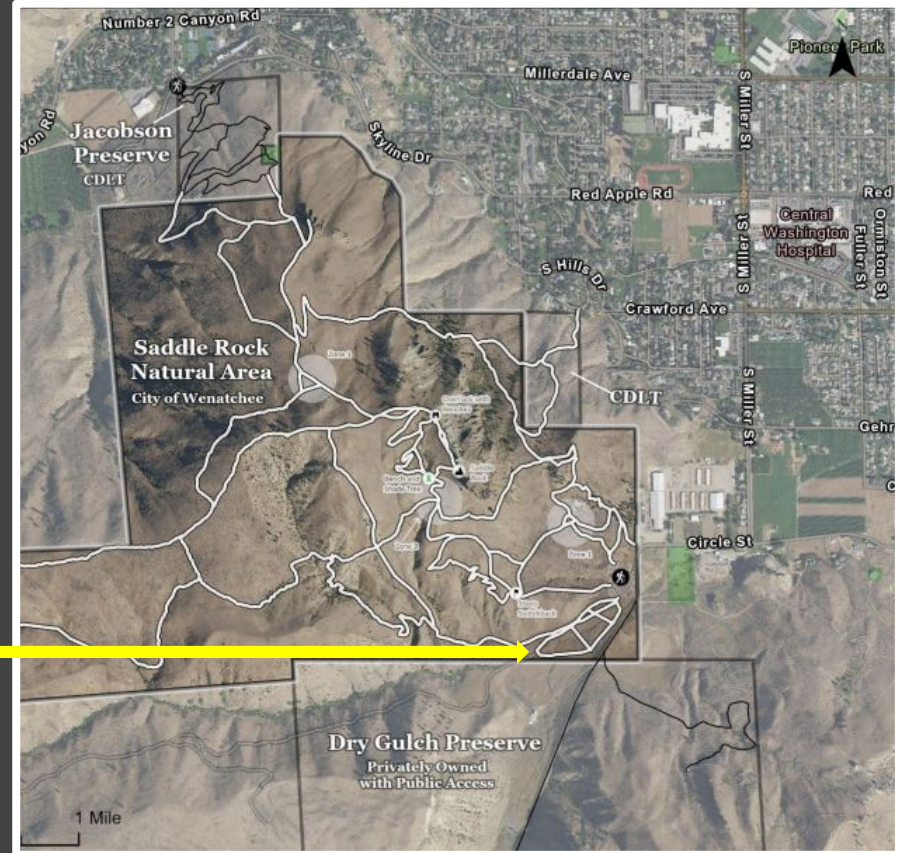


SADDLE ROCK NATURAL AREA
RECREATION & ACCESS PLAN

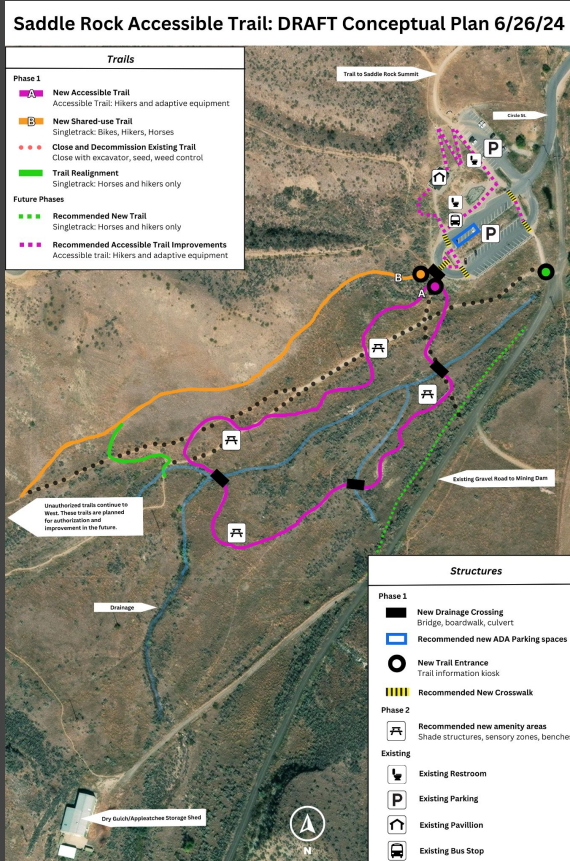
Accessible Trail Concept



Original trail concept from the
2023 SRNA Trail Plan



Community Input on Draft Accessible Trail Concept



Accessible Trail Features



trailaccessprogrct.org



<https://www.wa-rock.com/ask-the-rock-how-do-i-make-a-gravel-surface-wheelchair-accessible/>

Surface: Firm and Stable

Width: 6 to 8 feet wide, passing and turning areas

Grade: Less than 5%

Distance: Approx 0.75 miles

Trail Information: More objective, provided in multiple formats

Objective Trail Information

TAHOE RIM TRAIL

Tahoe Rim Trail

Tahoe Meadows to Spooner Summit

Length	21.8 mi (35.0 km)
Elevation Gain	2894 ft (882 m)
Elevation Loss	5528 ft (1685 m)

TRAIL USE

Hikers

Bikes
No Bikes: Spooner Summit to North Canyon Hobart Rd

Dogs

Equestrians

No Motor Vehicles

GRADE

Typical Grade	7.3%
27% of trail is	10% to 20%
1829 ft (557 m) is	20% to 29%
Standard Ramp Grade	8.3%

CROSS SLOPE

Typical Cross Slope	3.2%
18% of trail is	5% to 10%
2433 ft (741 m) is	10% to 20%

TREAD WIDTH

Typical Width	28 in (71 cm)
Minimum Width	18 in (45 cm)

SURFACE



Surface Type	Soil
Typical Firmness	0.17 in (F)
Minimum Firmness	0.40 in (MF)
1% of trail is	Moderately Firm
Typical Stability	0.51 in (MS)
Minimum Stability	0.73 in (MS)
25% of trail is	Moderately Stable

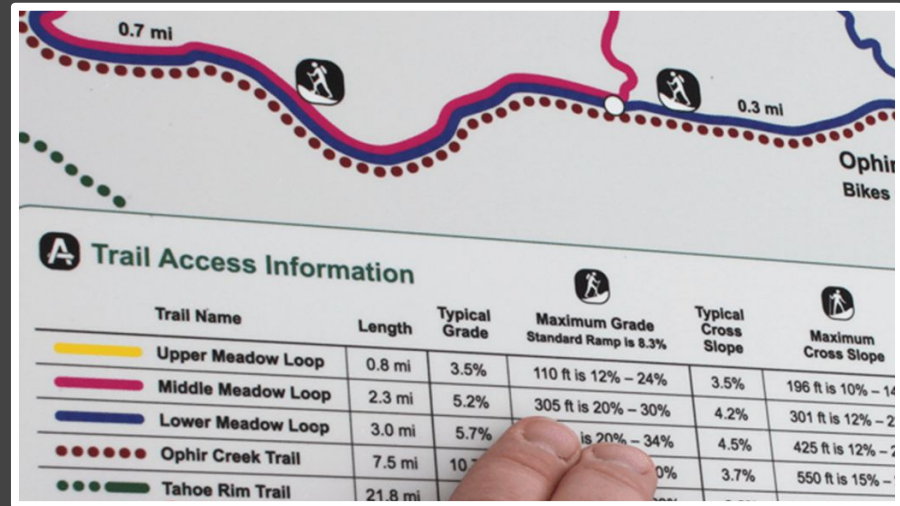
OBSTRUCTIONS

Multiple Rocks	18 in (46 cm)
----------------	---------------

VIEW MAP

Scan QR code to view Tahoe Meadows Loop Trail System Map www.tahoerimtrail.org



<https://www.beneficialdesigns.com/assessment/trails/>

- Length, elevation gain/loss, surface type
- Typical and maximum grade and cross slope
- Typical and minimum width
- Typical surface (firmness and stability)
- Presence of obstructions

Amenities - Shade & Rest

Placed at intervals along the trail,
includes seating, accessible spaces



<https://www.sandiego.gov/park-and-recreation/parks/trail-for-all-people>



<https://www.dreamstime.com/photos-images/park-bench-walking-path-sunrise.html>

Amenities - Gathering Spaces

Meeting place for school groups and other trail users, educational presentations, provides rest area



<https://cascadestoneworks.com/product/basalt-seats-natural-top/>



<https://autismnaturetrail.com/trail-map/#stations>

Amenities - Points of Interest

Educational opportunities, information provided in multiple formats, additional opportunities to provide navigation



<https://www.gogreat.com/blog/must-try-outdoor-attractions-in-the-great-lakes-bay/>



https://www.patronicity.com/project/educational_trail_signs_at_woodcock_nature_center#!/

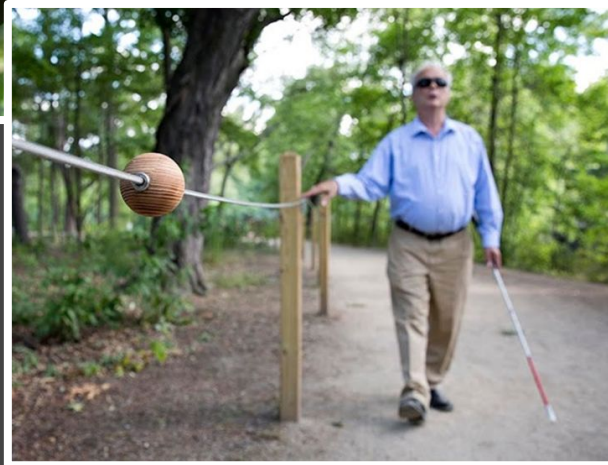


<https://talesofamountainmama.com/gear-for-hiking-in-the-rain/>

Braille Trail Features



<https://nelowvision.com/resources/essex-county-braille-trail-opens-the-woods-for-blind-hikers/>



<https://www.wbur.org/morningedition/2016/11/15/all-persons-braille-trails>

Guideline: Cable, chain, or other durable material (also serves as barrier for accessible trail area)

Amenity Markers: Notify users of nearby signage or rest area

Braille Signage: Available for navigation and points of interest

Sensory: Opportunities to use other sensory systems

Amenities - Sensory Stations

Opportunities to smell, touch, and listen to your surroundings.
Opportunities for additional stimulation via movement.



https://www.freepik.com/premium-photo/wellbeing-nature-woman-enjoying-scent-lavender-flowers_3977775.htm



<https://www.wenatcheevalleymuseum.org/2020/a-sampler-of-songbirds-in-ncw/>



<https://www.democratandchronicle.com/story/news/2021/10/20/new-autism-nature-trail-opens-at-letchworth-state-park-see-the-photos/8436239002/>

Improvements to Existing Areas

- Accessible pathways between trailhead, parking lot, restrooms, and bus stop
- Create access route between proposed accessible trail and pavilion
- Improve/add signage of new and existing trail system



Trail Restrictions and Considerations

- Land use restrictions
- Sustainability, maintenance
- Vandalism
- Budgetary confinements
- Multiple user groups
- Future development plans



Existing Site



Saddle Rock Accessible Trail: DRAFT Conceptual Plan 6/26/24

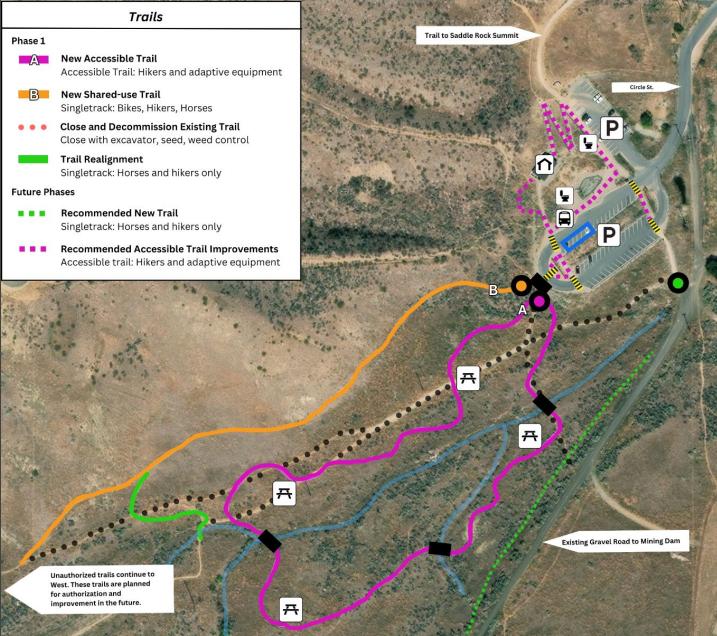
Trails

Phase 1

- A** **New Accessible Trail**
Accessible Trail: Hikers and adaptive equipment
- B** **New Shared-use Trail**
Singletrack: Bikes, Hikers, Horses
- Close and Decommission Existing Trail**
Close with excavator, seed, weed control
- Trail Realignment**
Singletrack: Horses and hikers only

Future Phases

- Recommended New Trail**
Singletrack: Horses and hikers only
- Recommended Accessible Trail Improvements**
Accessible trail: Hikers and adaptive equipment



Structures

Phase 1

- New Drainage Crossing**
Bridge, boardwalk, culvert
- Recommended new ADA Parking spaces**
- New Trail Entrance**
Trail information kiosk
- Recommended New Crosswalk**

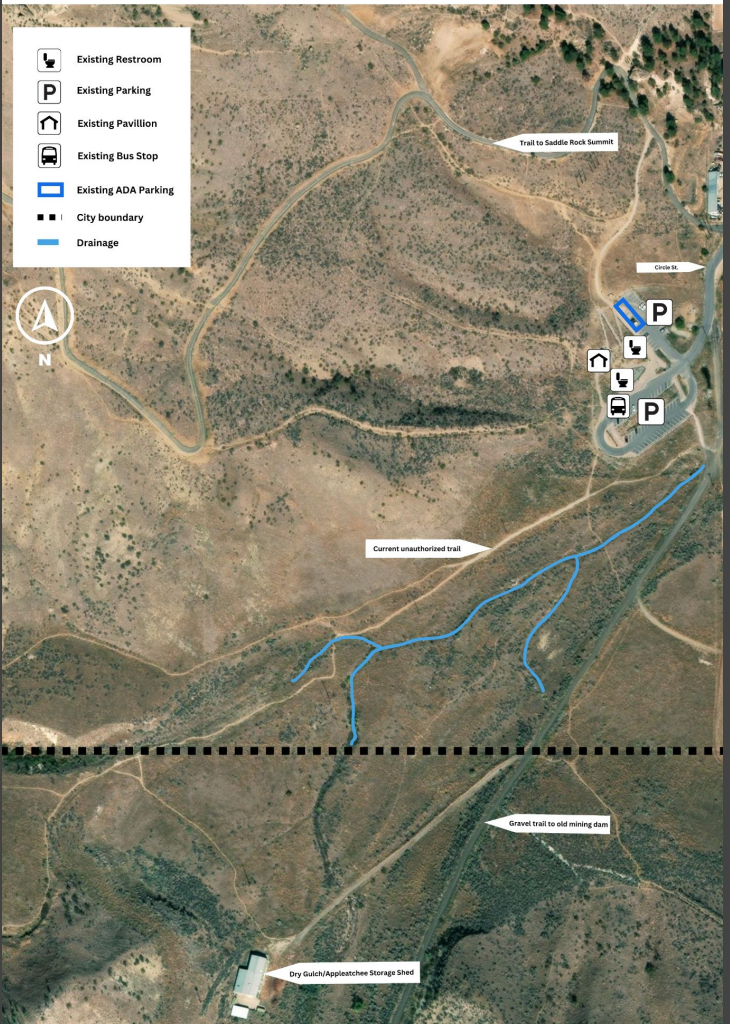
Phase 2

- Recommended new amenity areas**
Shade structures, sensory zones, benches

Existing

- Existing Restroom
- Existing Parking
- Existing Pavillion
- Existing Bus Stop

Existing Site: Saddle Rock Natural Area

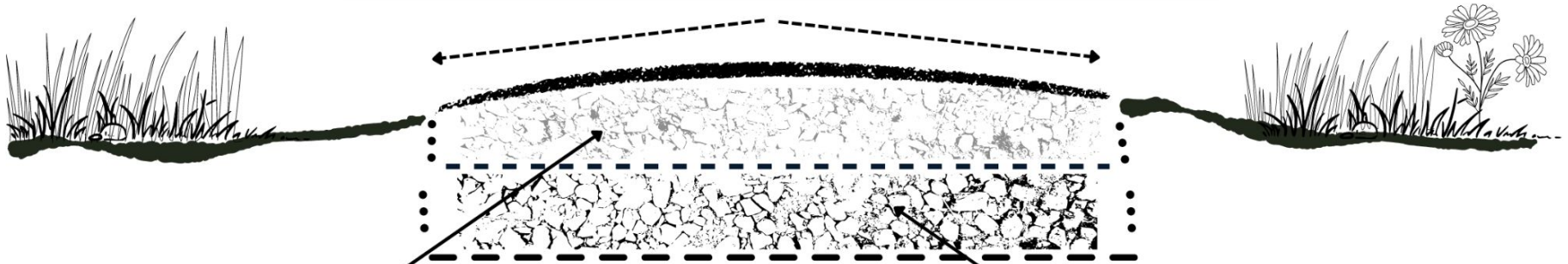


Existing Site Legend

- Existing Restroom
- Existing Parking
- Existing Pavillion
- Existing Bus Stop
- Existing ADA Parking
- City boundary
- Drainage

Cross-section: Accessible Trail

Trail surface is compacted and crowned:
2% outslope on each side of center

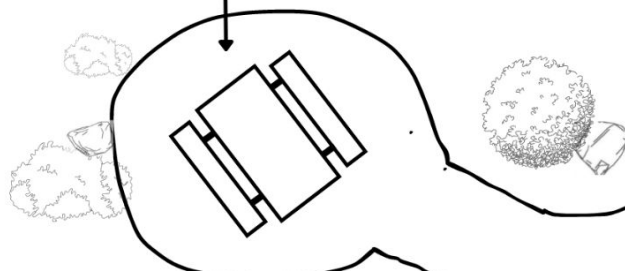


8" layer of 3/8" minus
crushed stone

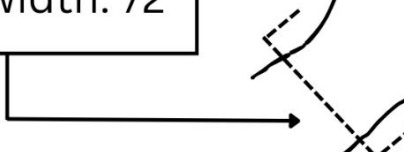
4-6" layer of 1" clean,
angular crushed stone

Overhead view: Accessible Trail

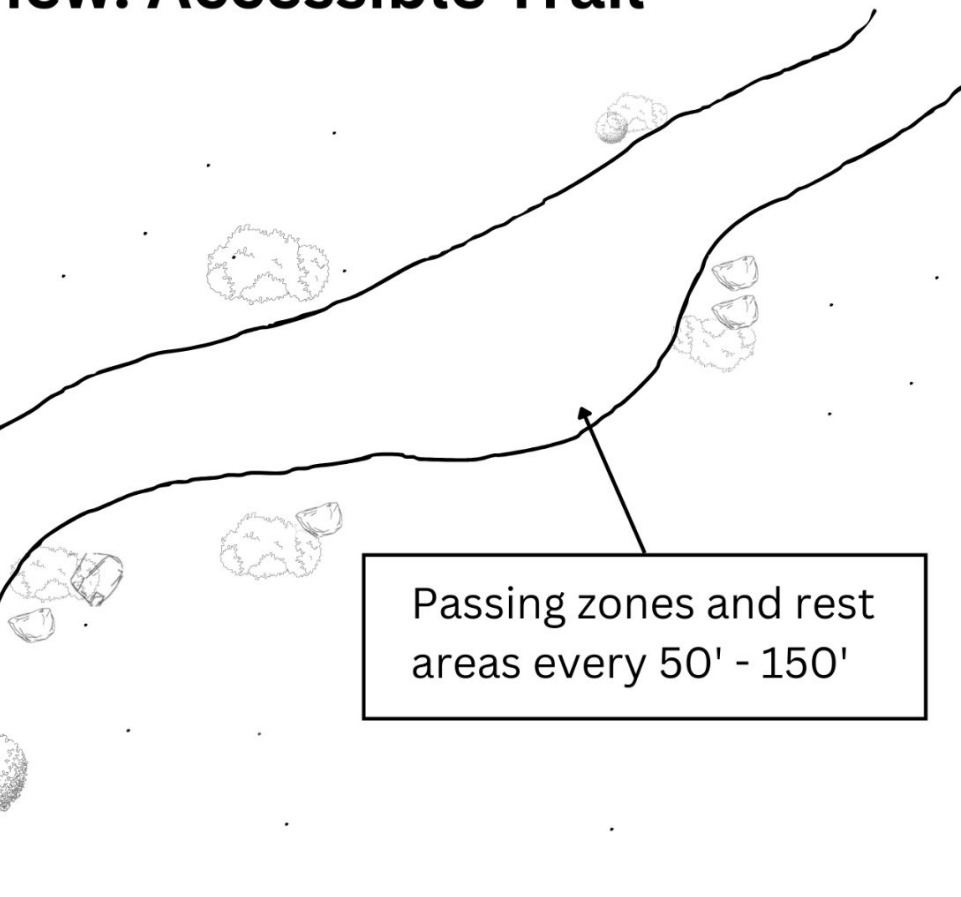
Amenity areas and seating along route



Average trail width: 72"



Passing zones and rest areas every 50' - 150'





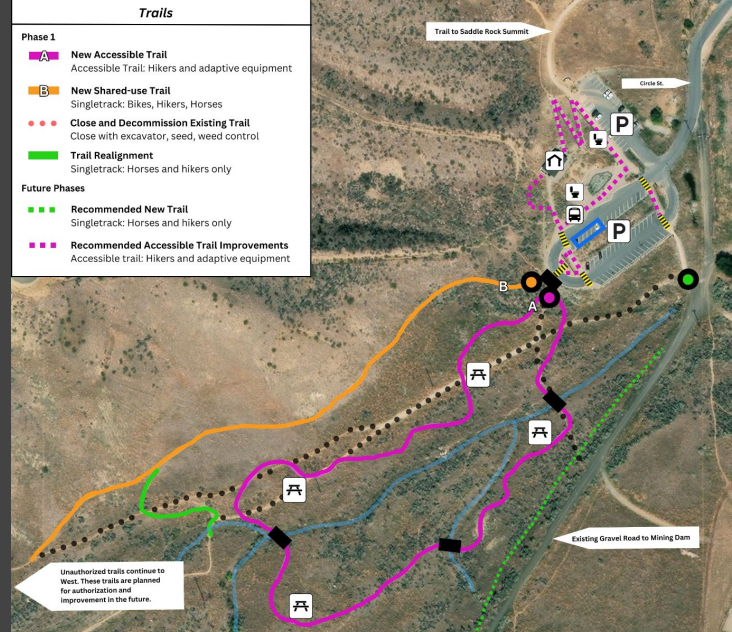
New Accessible Trail:

Open to hikers and wheels (including adaptive bikes) under 5 mph (no horse or fast biking)

Additional Information:

- 5% maximum slope
- 2% maximum outslope
- Average of 6-8 feet wide
- Access to amenities
- Approximately 0.75 - 1.25 miles long
- Surface is 3/8" compacted crush stone
- 1 wooden bridge for stream crossing
- Passing areas every 50-100 feet
- Braille trail guide rope on trail edge

Trails	
Phase 1	
A	New Accessible Trail Accessible Trail: Hikers and adaptive equipment
B	New Shared-use Trail Singletrack: Bikes, Hikers, Horses
•••	Close and Decommission Existing Trail Close with excavator, seed, weed control
—	Trail Realignment Singletrack: Horses and hikers only
Future Phases	
•••	Recommended New Trail Singletrack: Horses and hikers only
—	Recommended Accessible Trail Improvements Accessible trail: Hikers and adaptive equipment



Structures	
Phase 1	
—	New Drainage Crossing Bridge, boardwalk, culvert
—	Recommended new ADA Parking spaces
○	New Trail Entrance Trail information kiosk
 	Recommended New Crosswalk
—	Recommended new amenity areas Shade structures, sensory zones, benches
Existing	
—	Existing Restroom
P	Existing Parking
—	Existing Pavillion
—	Existing Bus Stop



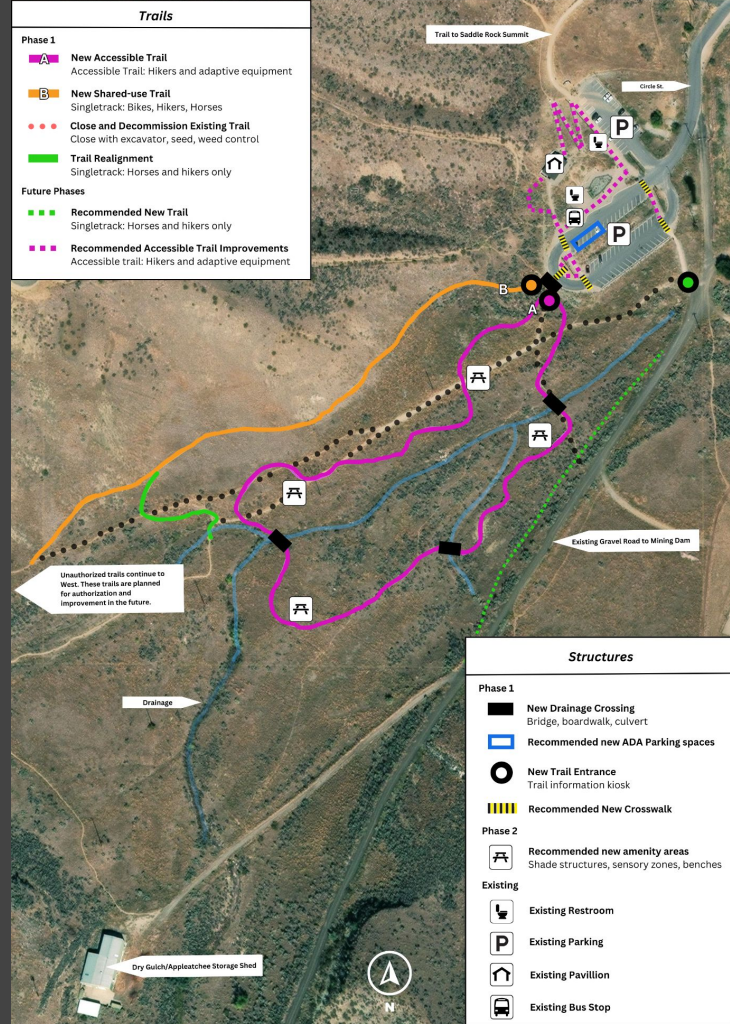


New Multi-use Trail:

Open to bikes, hikers, and horses

Additional Information:

- Surface is natural soil
- 4 - 6 feet wide
- Passing areas every 150-250 feet
- 10% maximum slope
- Approximately 1 mile long
- 5% maximum outslope
- Contours bottom of hill
- Designed to offer bypass route around accessible trail

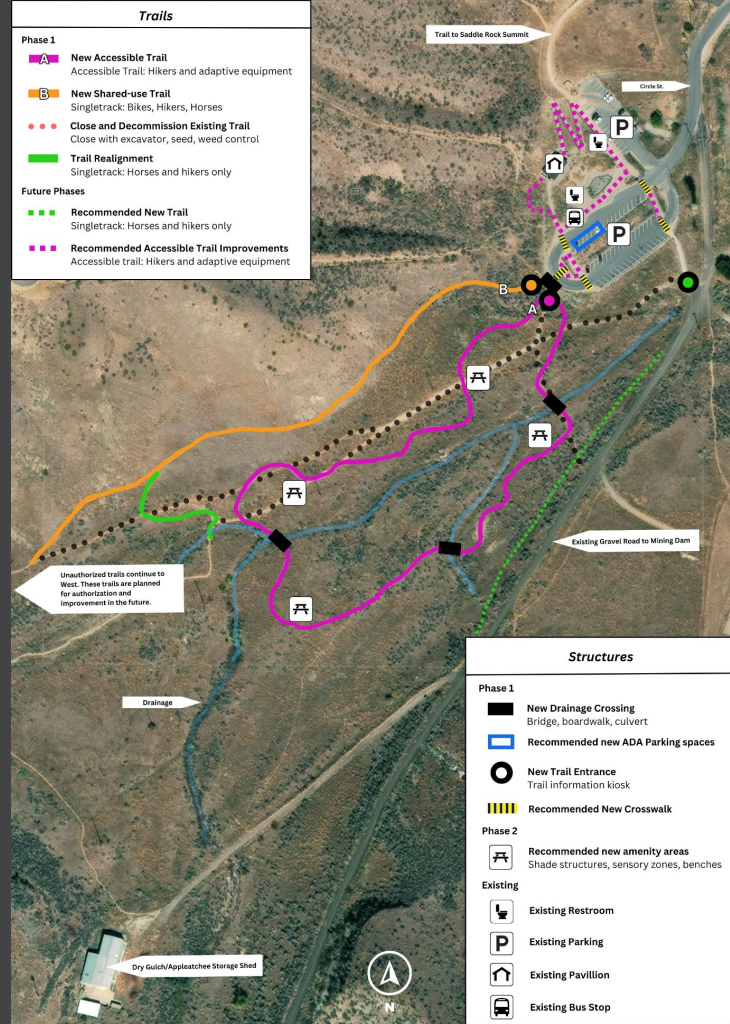




New amenity areas

We are currently considering the following options:

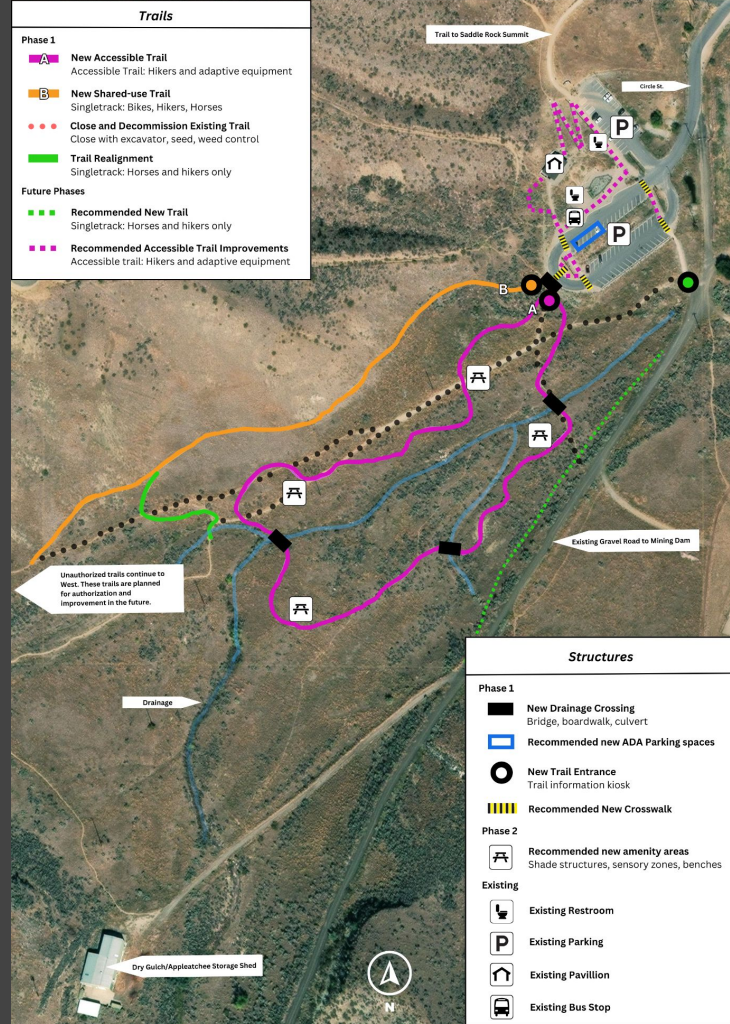
- Shade structures with seating
- Interactive nature-focused learning and play features
- Teaching areas
- Art and interpretive signage



New Trail Entrances

Additional Information:

- These areas are where visitors will enter the trails from the parking area
- Entrances will have signage, dog care stations, and trail maps



Saddle Rock Accessible Trail: DRAFT Conceptual Plan 6/26/24



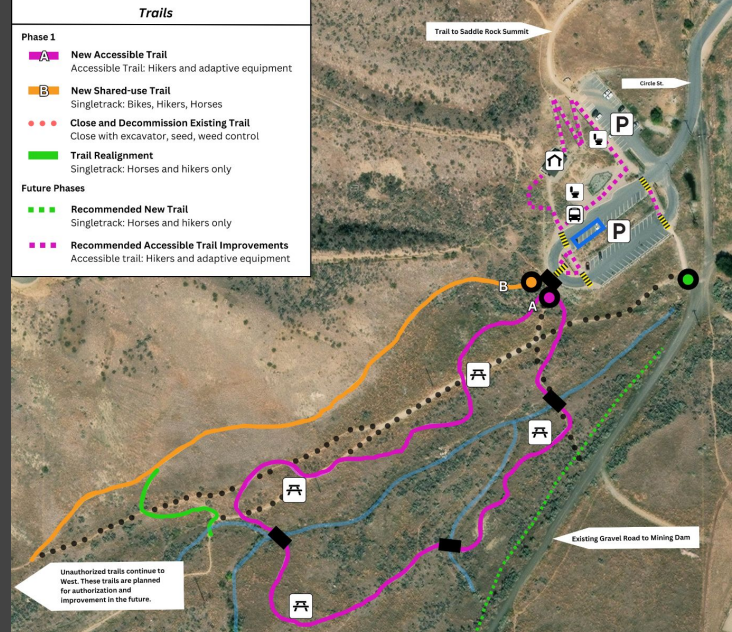
Restrooms



Parking Area

Please comment on any current accessibility and inclusion issues or improvements regarding the restrooms and the parking area

Trails	
Phase 1	
	New Accessible Trail Accessible Trail: Hikers and adaptive equipment
	New Shared-use Trail Singletrack: Bikes, Hikers, Horses
	Close and Decommission Existing Trail Close with excavator, seed, weed control
	Trail Realignment Singletrack: Horses and hikers only
Future Phases	
	Recommended New Trail Singletrack: Horses and hikers only
	Recommended Accessible Trail Improvements Accessible trail: Hikers and adaptive equipment



Structures	
Phase 1	
	New Drainage Crossing Bridge, boardwalk, culvert
	Recommended new ADA Parking spaces
	New Trail Entrance Trail information kiosk
	Recommended New Crosswalk
Phase 2	
	Recommended new amenity areas Shade structures, sensory zones, benches
Existing	
	Existing Restroom
	Existing Parking
	Existing Pavillion
	Existing Bus Stop

Unauthorized trails continue to West. These trails are planned for authorization and improvement in the future.

Drainage

Dry Gulch/Appleatchee Storage Shed

Trail to Saddle Rock Summit

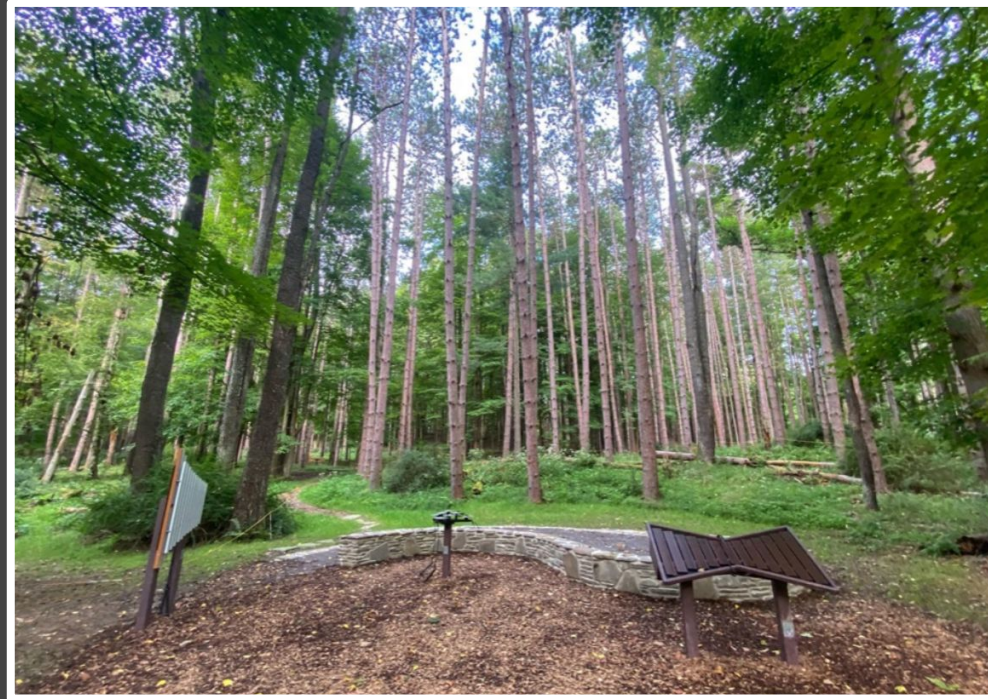
Circle M

Existing Gravel Road to Mixing Dam

Accessible Trail Design Ideas



Accessible Trail Design Ideas



Accessible Trail Design Ideas

