

PUBLIC WORKS

AT WORK

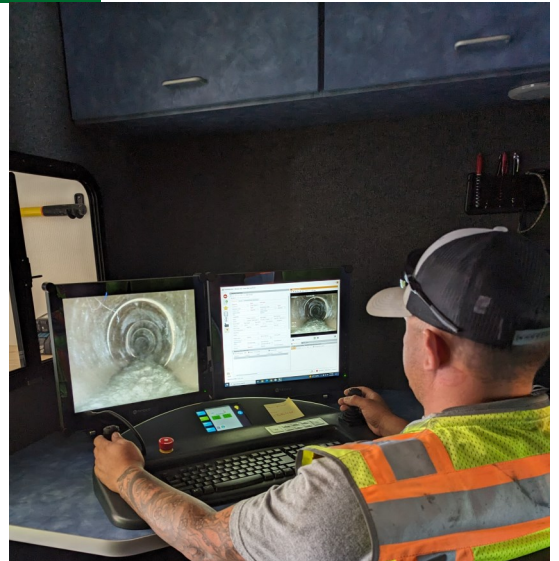
Check out what your local Wenatchee Public Works Department is up to.



“You don’t take a photo, you make it.” – Ansel Adams

Take a step outside your door and walk out onto one of our City streets and below your feet might look like just asphalt, but beneath that asphalt is miles of water, sewer and stormwater pipes traversing throughout the City. The City of Wenatchee Collections Division, made up of 5 incredible, hardworking employees, is in charge of maintaining the sewer and stormwater pipes. Your cities sewer system is made up of 155 miles of sanitary sewer pipes and 3,153 manholes (small circular openings that give our City staff the ability to climb down and enter our utilities systems). The stormwater system is 93 miles of mainline pipes and 1,709 manholes. Those are some astounding numbers and can be very difficult to inspect and maintain. That was until the City Collections Division received a camera truck.

Previously, when the City did not have a camera truck and emergencies would arise, crews would need to dig up the street to try and pin point the problem. This would shut down streets and cause major traffic disruptions. Now with the use of our camera truck the crew can easily open a manhole lid, drop the camera down to the mainline pipe, and drive it looking for any issues or potential future issues. This allows us to not only to pin point emergencies, but also for routine inspections to gauge the age and deterioration of our system for future capital projects and system replacements.



These cameras are approximately 24 inches long and 5.5 inches tall and can fit into pipes as small as 6 inches. They can travel and video up to 1,000 feet of pipe at a time. The camera is lowered down with a small crane that is part of the truck and once it reaches the floor of the manhole it travels into the pipe, which is where a video operator that takes over and drives, videoing and inspecting as they go. We save these videos on our GIS system so they are easily accessible in the future and to build a story of these locations. Because of our dedicated staff we keep your sewer, stormwater and water systems operating efficiently.



If you have any questions about our camera truck operations division or anything else please feel free to call our Public Works Department at **(509) 888-3200**.

Thank you!