



*City of
Wenatchee*

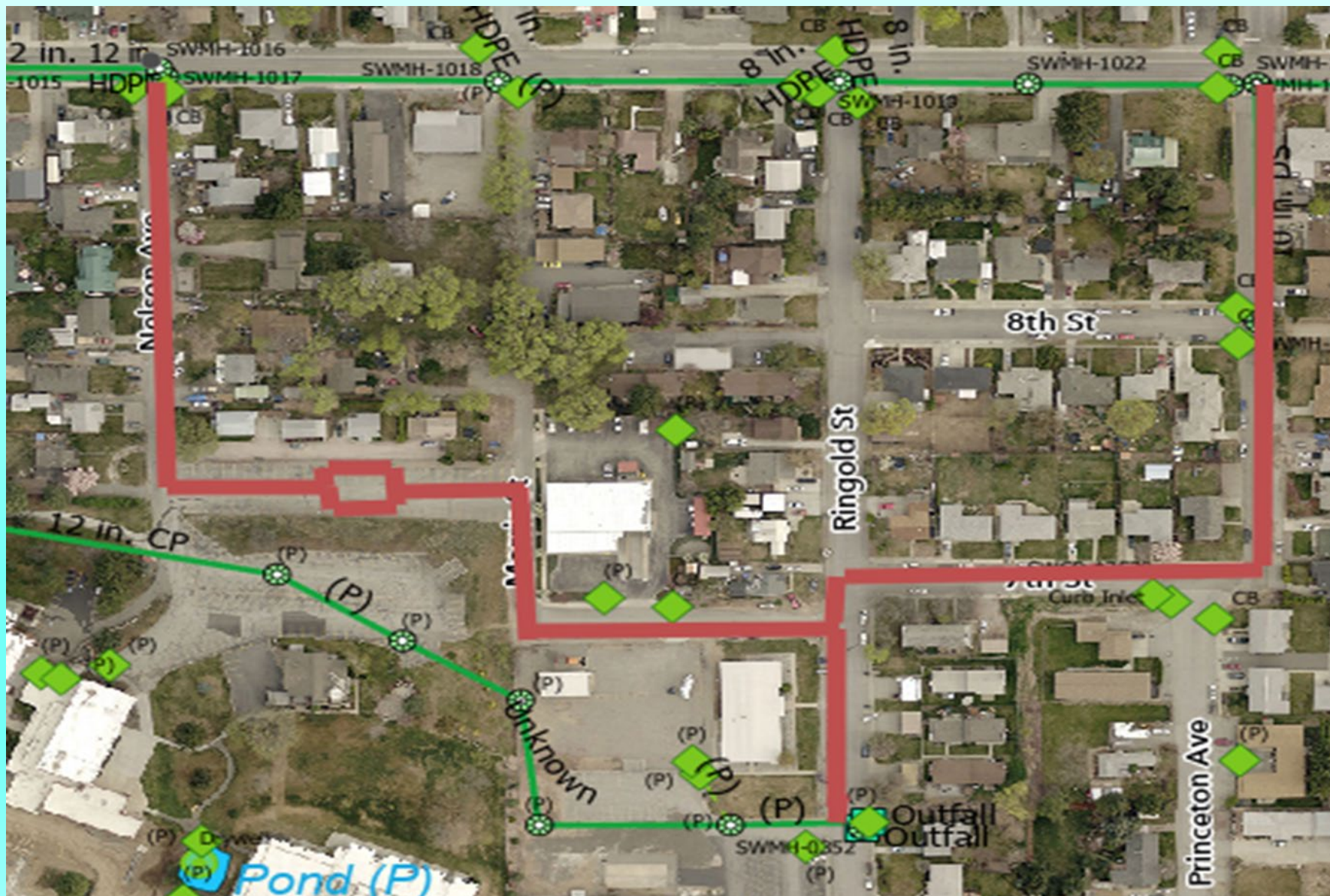


DEPARTMENT OF
ECOLOGY
State of Washington

9th Street Stormwater Project

City of Wenatchee – Public Works Department

MAP OF PROJECT AREA



The Neighborhoods



Nelson Avenue



Morris Street



Ringold- South of Morris Street



7th Street



7th and Princeton



Princeton Avenue

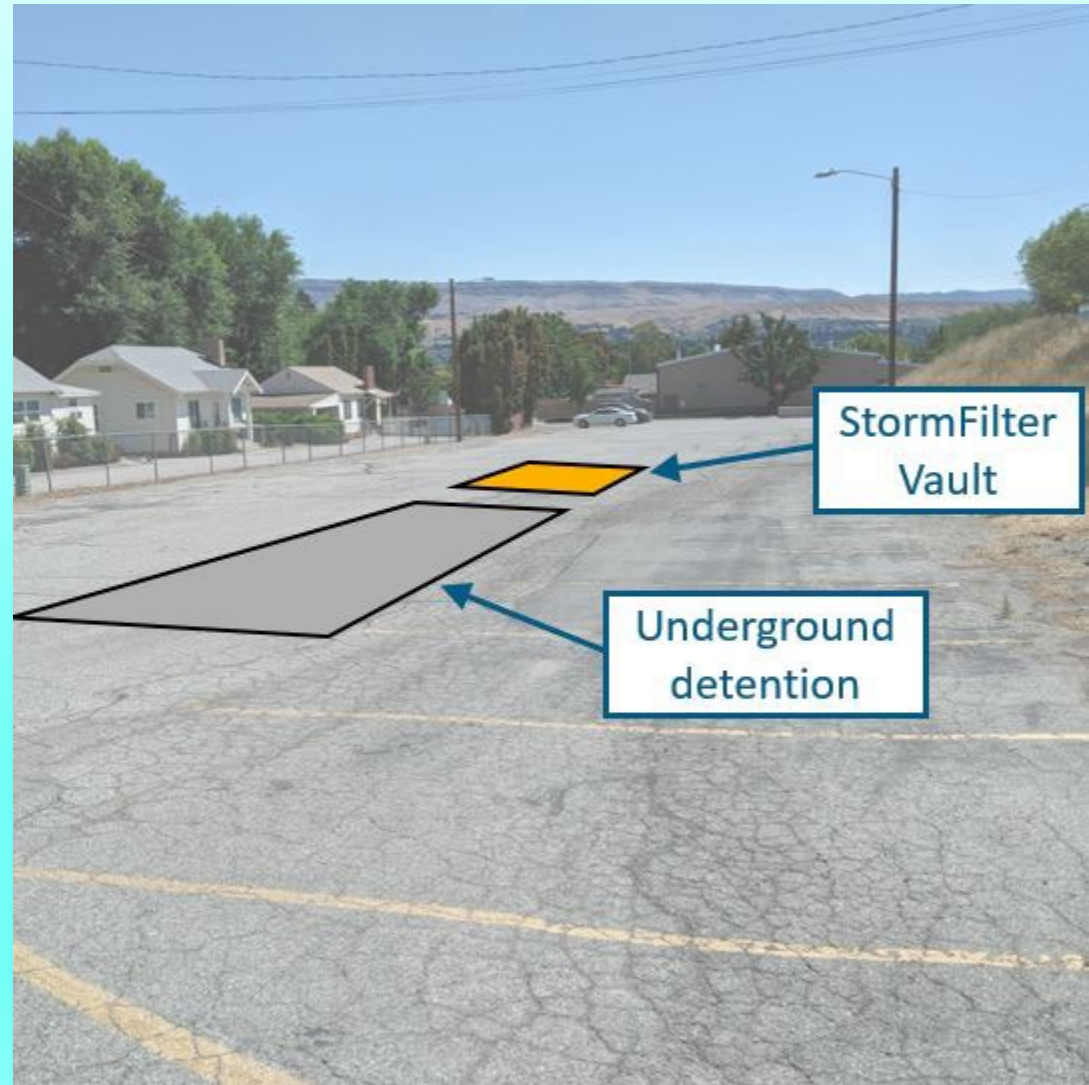
The Canyon Drain



The College Campus



Lower Wells House parking lot will get an underground detention vault and new paving



Construction Details



- * **Work will begin in Spring - April 2024**
- * **Completion 12 – 14 weeks**
- * **Daytime working hours**
- * **Access to homes will remain open**
- * **75% of Funding provided by grants from the Department of Ecology SFAP program**

Construction Details

PROJECT GOALS AND OUTCOME

- **INCREASE WATER QUALITY THAT GOES TO THE COLUMBIA RIVER**
- **TREAT STORMWATER RUNOFF FROM STREETS AND COLLEGE CAMPUS**
- **REDUCE STORMWATER THAT GOES TO THE NUMBER 2 CANYON DRAIN**
- **IMPROVE FLOODING IN THE AREAS**



Questions and Answers

Project Manager – Darci Mattioda
(509) 888 - 3287
Dmattioda@wenatcheewa.gov

City Public Works Department:
(509) 888 - 3200

Contact Information