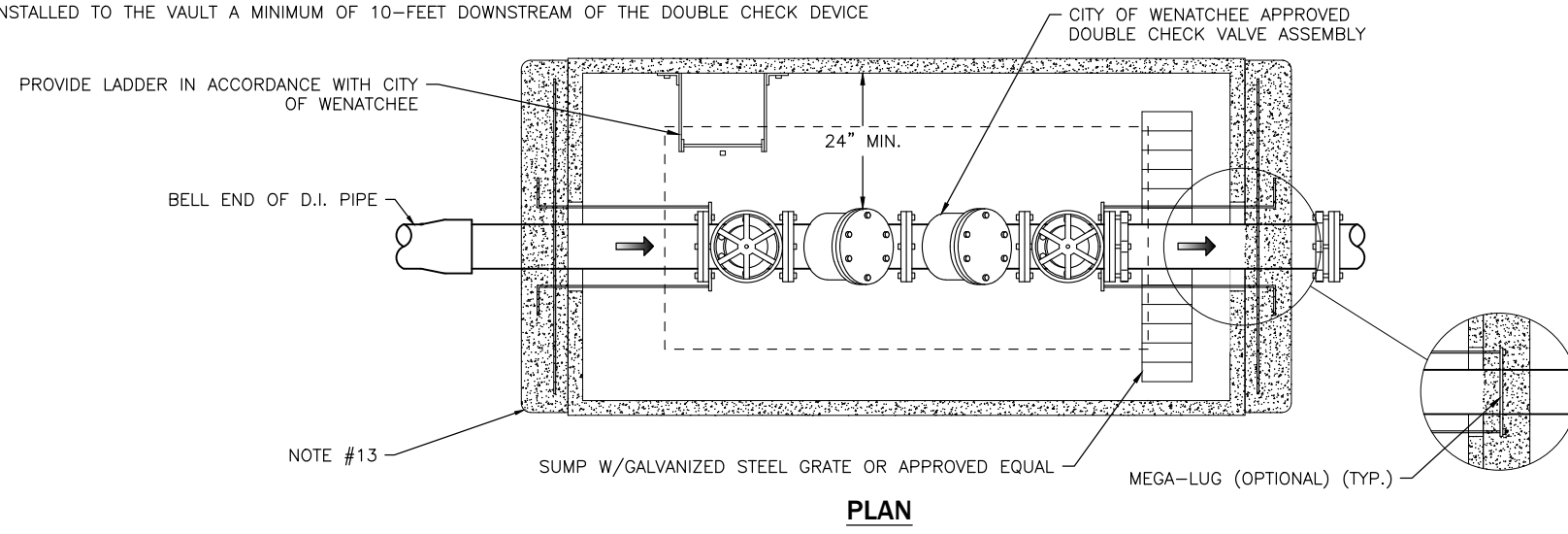
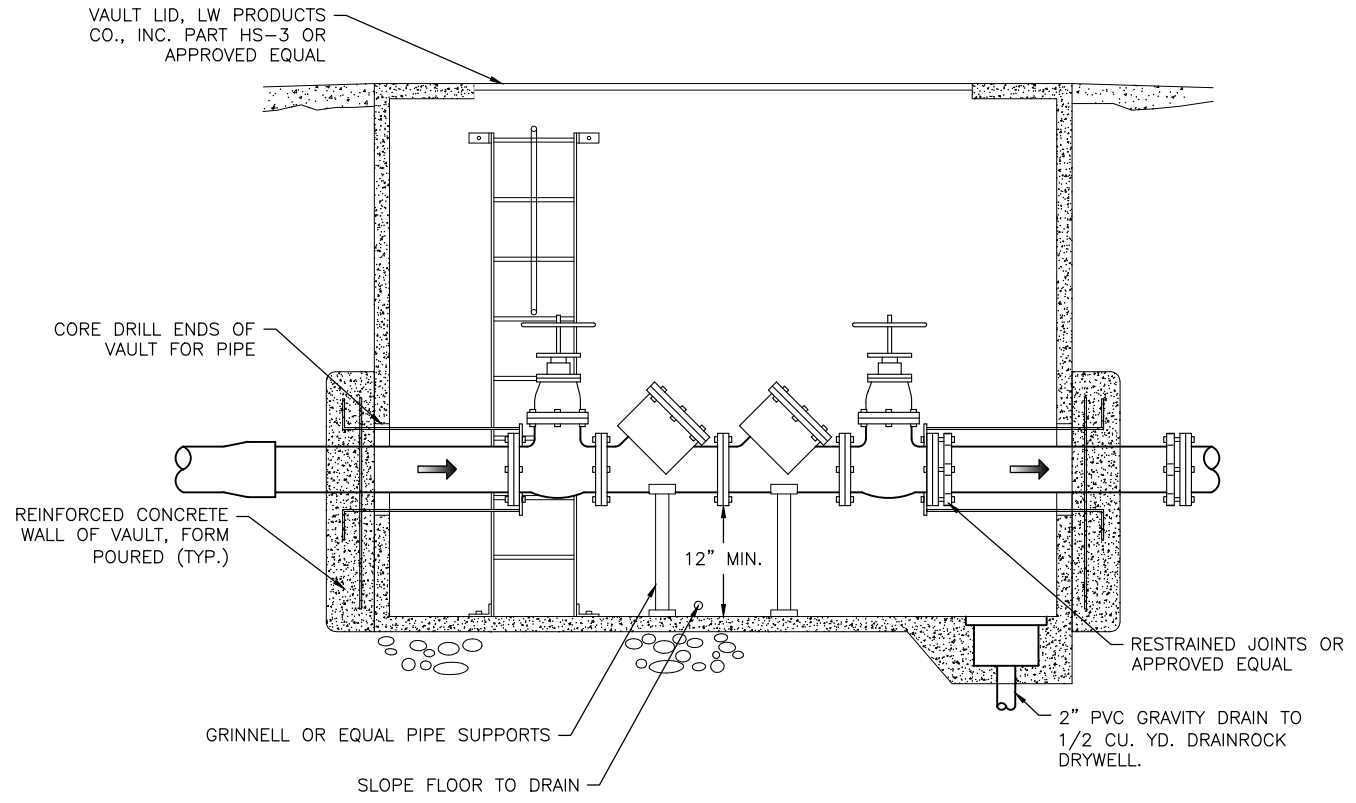


**NOTES:**

1. TYPICAL LOCATION IS AT OR NEAR THE PROPERTY LINE, AT BACK OF WATER METER CHAMBER.
2. COVER SHALL NOT EXTEND MORE THAN 2" ABOVE GRADE WHEN VAULT IS NOT IN TRAFFIC AREA.
3. SLOPE PAVEMENT AWAY FROM COVER.
4. VAULT LID SHALL BE OF ADEQUATE HEIGHT TO PROVIDE MIN. 6" CLEARANCE TO O, S & Y VALUE WHEN VALVE IS FULLY OPEN.
5. VAULTS SHALL BE AS MANUFACTURED BY UTILITY VAULT OR APPROVED EQUAL AND SHALL BE STRUCTURALLY DESIGNED FOR THE PROPOSED INSTALLATION.
6. BACK-FLOW VALVE AND ASSEMBLY MUST APPEAR ON CURRENT DEPT. OF HEALTH'S APPROVED VALVE LISTING.
7. RESTRAIN CHECK DETECTOR WITH MEGA-LUGS, RESTRAINED JOINT PIPE, OR SHACKLE RODS BACK TO WATER MAIN AS REQUIRED.
8. BOTTOMLESS VAULTS MUST PROVIDE CONCRETE SUPPORT FOUNDATIONS FOR PIPE SUPPORTS.
9. ASSEMBLY SHALL BE MAINTAINED BY OWNER WITH A TEST DONE UPON INSTALLATION AND ANNUALLY THEREAFTER BY A CERTIFIED BACK-FLOW ASSEMBLY TESTER (BAT.) A COPY OF EACH ANNUAL TEST REPORT MUST BE SENT TO THE CITY OF WENATCHEE.
10. WATER SERVICE SHALL NOT BE PLACED IN SERVICE UNTIL AFTER DOUBLE CHECK DETECTOR ASSEMBLY IS INSPECTED, TESTED AND APPROVED BY CITY REPRESENTATIVE.
11. ACCOUNT FOR THERMAL EXPANSION WITHIN THE PREMISES.
12. AN ALTERNATE LOCATION MAY BE ALLOWED BY THE WATER PURVEYOR.
13. CONCRETE THRUST RESTRAINT LOCATED OUTSIDE THE VAULT ARE NOT REQUIRED WITH A NEW WATER MAIN TAP AND FULLY RESTRAINED JOINTS HAVE BEEN INSTALLED TO THE VAULT A MINIMUM OF 10- FEET DOWNSTREAM OF THE DOUBLE CHECK DEVICE



**PLAN**



**SECTION**

**STANDARD DETAIL  
DOUBLE CHECK VALVE  
PREMISES ISOLATION**



SCALE: AS SHOWN	DATE DRAWN	REVISIONS			
		DATE	INITIAL		
DESIGNED DMN	3/23/2015	8/4/2020	DMN		
DRAWN RDH	CHECKED DMN	01/01/2022	AJS		
APPROVED BY	DATE APPROVED	03/31/2023	JTB		

STANDARD SPECIFICATIONS  
6-02 CONCRETE STRUCTURES  
7-09 WATER MAINS  
7-12 VALVES FOR WATER MAINS  
7-15 SERVICE CONNECTIONS

DETAIL NO.  
**W-210**

PAGE  
**1 OF 1**