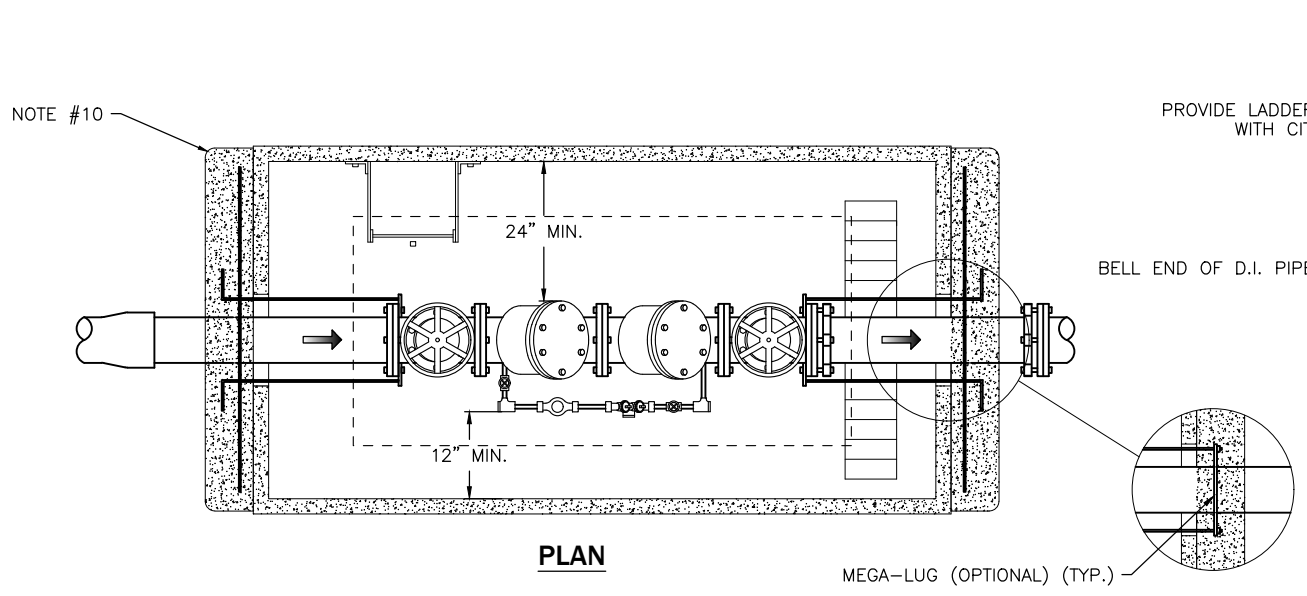
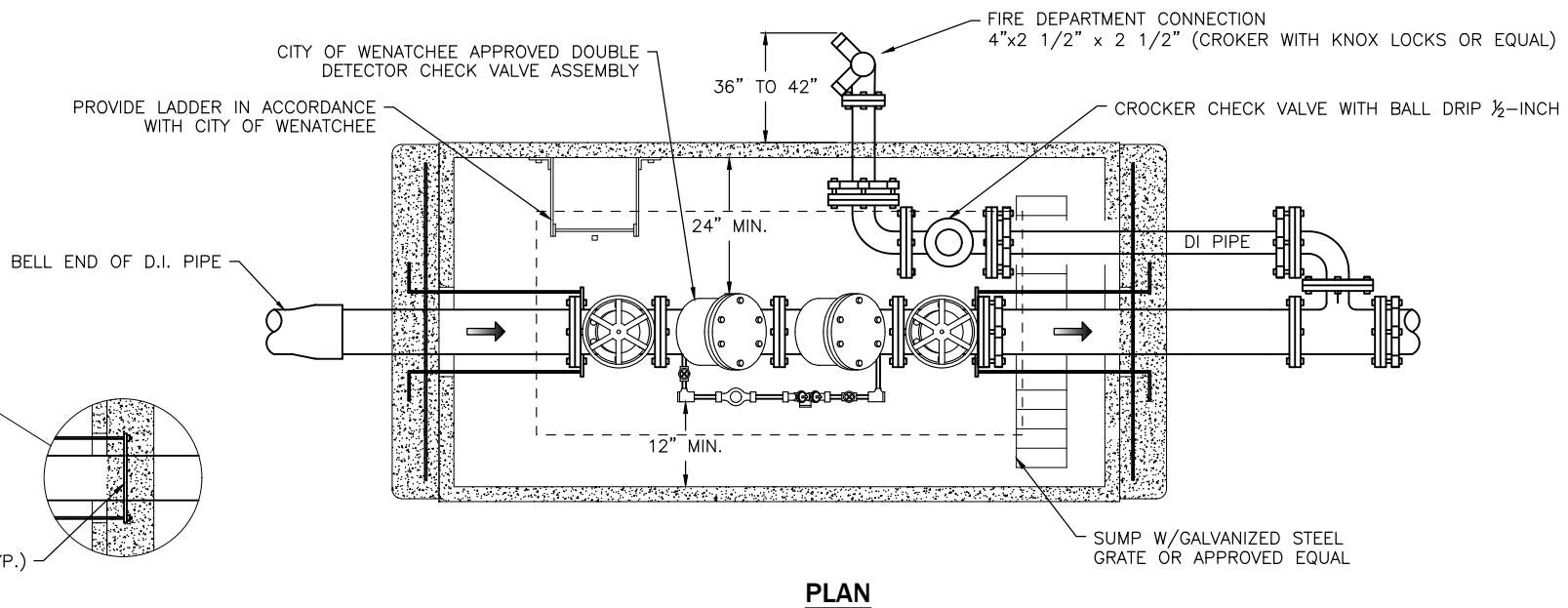


NOTES:

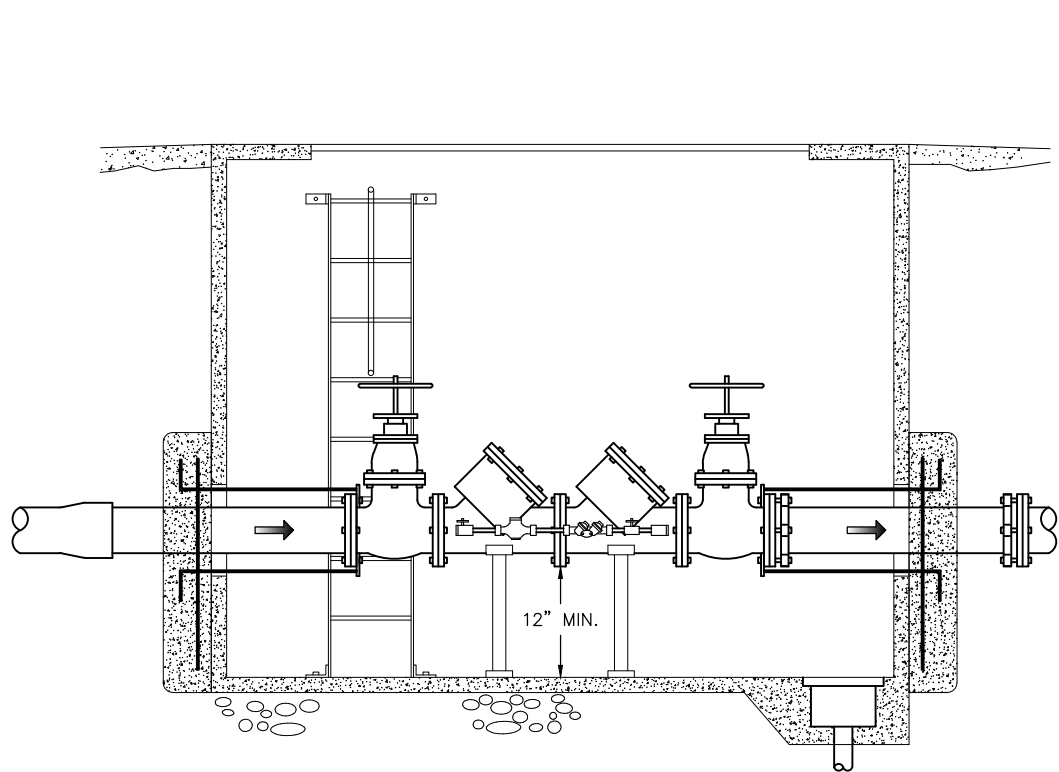
- COVER SHALL NOT EXTEND MORE THAN 2-INCH ABOVE GRADE WHEN VAULT IS NOT IN TRAFFIC AREA.
- SLOPE PAVEMENT AWAY FROM COVER.
- VAULT LID SHALL BE OF ADEQUATE HEIGHT TO PROVIDE MIN. 6-INCH CLEARANCE TO O, S & Y VALVE WHEN VALVE IS FULLY OPEN.
- 5/8-INCH BY-PASS METER SHALL BE SENSUS SR II OR NEPTUNE T-10.
- VAULTS SHALL BE AS MANUFACTURED BY UTILITY VAULT OR APPROVED EQUAL AND SHALL BE STRUCTURALLY DESIGNED FOR THE PROPOSED INSTALLATION.
- BACK-FLOW VALVE AND ASSEMBLY MUST APPEAR ON CURRENT DEPT. OF HEALTH'S APPROVED VALVE LISTING.
- ASSEMBLY SHALL BE MAINTAINED BY OWNER WITH A TEST DONE UPON INSTALLATION AND ANNUALLY THEREAFTER BY A CERTIFIED BACK-FLOW ASSEMBLY TESTER (BAT.) A COPY OF EACH ANNUAL TEST REPORT MUST BE SENT TO THE CITY OF WENATCHEE.
- WATER MAIN SHALL NOT BE PLACED IN SERVICE UNTIL AFTER DOUBLE CHECK DETECTOR ASSEMBLY IS INSPECTED, TESTED AND APPROVED BY CITY REPRESENTATIVE.
- RESTRAIN CHECK DETECTOR WITH MEGA-LUGS, RESTRAINED JOINT PIPE, OR SHACKLE RODS BACK TO WATER MAIN AS REQUIRED.
- CONCRETE THRUST RESTRAINT LOCATED OUTSIDE THE VAULT ARE NOT REQUIRED WITH A NEW WATER MAIN TAP AND FULLY RESTRAINED JOINTS HAVE BEEN INSTALLED TO THE VAULT AND A MINIMUM OF 10- FEET DOWNSTREAM OF THE DOUBLE CHECK DEVICE.



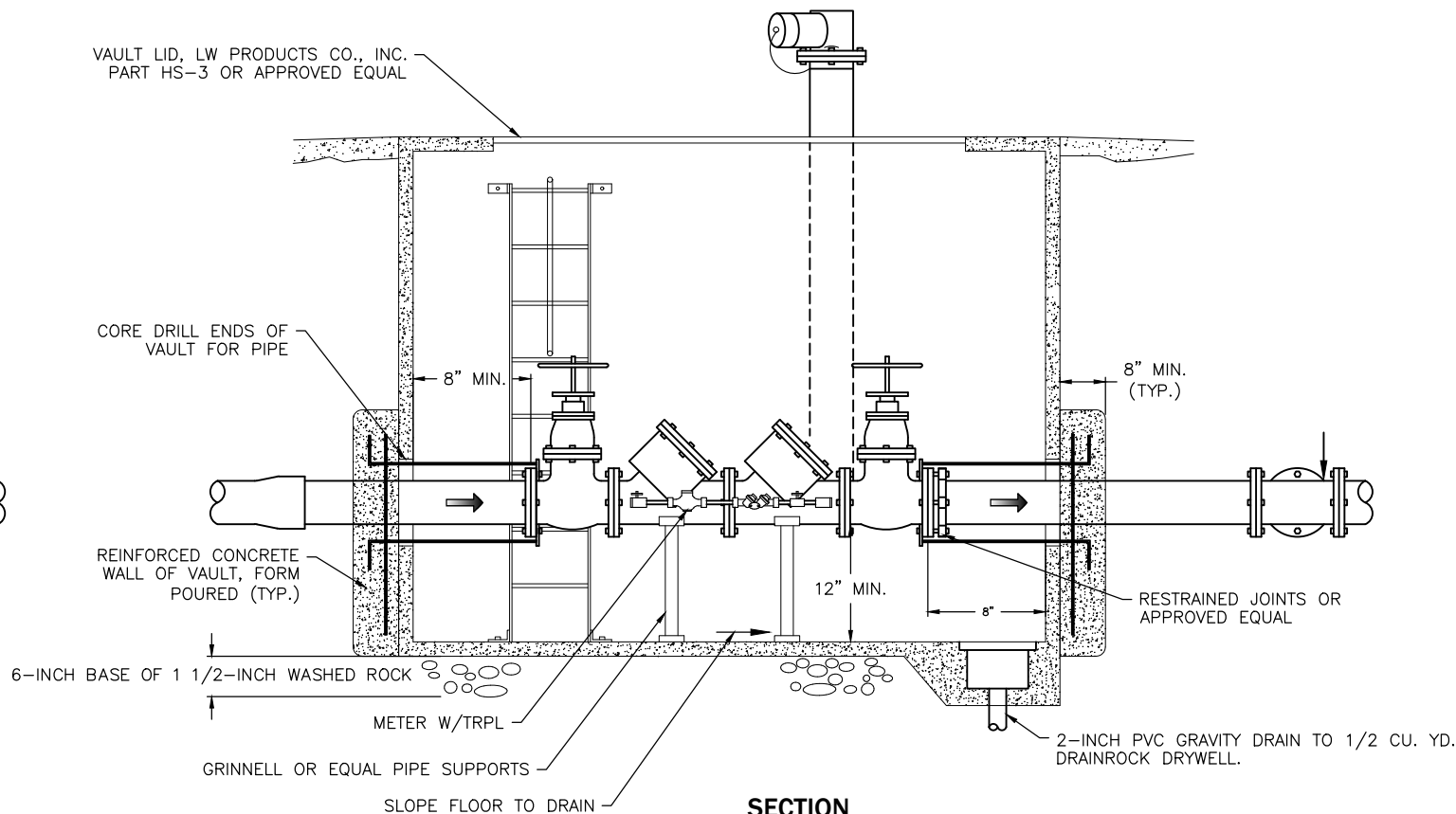
SHOWN WITHOUT FIRE DEPARTMENT CONNECTION.
WHEN FDC IS AT ANOTHER LOCATION



THIS DCDA VAULT SERVES A SINGLE BUILDING AND
THE VAULT IS LOCATED ADJACENT TO THE RIGHT
OF WAY WHERE A FIRE HYDRANT IS NEARBY.



SECTION



SECTION

STANDARD DETAIL
FIRE SERVICE
DCDA CONNECTION



SCALE: AS SHOWN	DATE DRAWN 3/23/2015	REVISIONS			
		DATE	INITIAL	DATE	INITIAL
DESIGNED DMN	CHECKED DMN	02/20	CAW	01/22	AJS
APPROVED BY	DATE APPROVED	03/31/2023	JTB		

STANDARD SPECIFICATIONS
6-02 CONCRETE STRUCTURES
7-09 WATER MAINS
7-12 VALVES FOR WATER MAINS
7-15 SERVICE CONNECTIONS

DETAIL NO.
W-200A

PAGE
1 OF 2