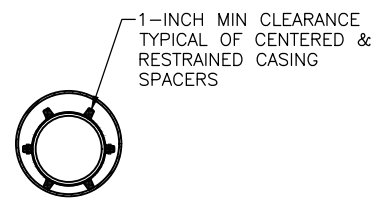
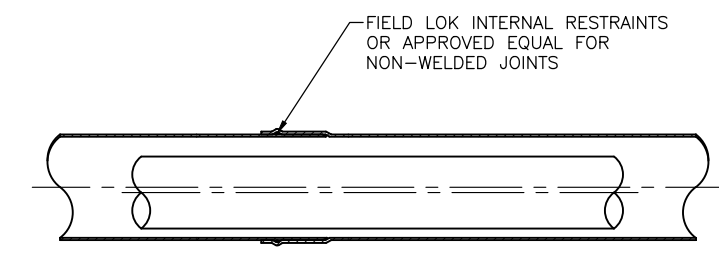


KEY NOTES:

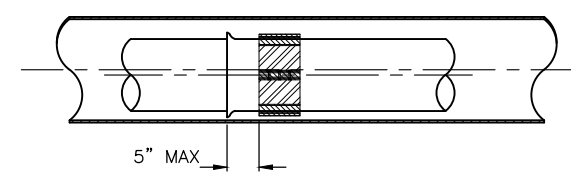
- CARRIER PIPE SHALL BE USED AS REQUIRED WITHIN CITY RIGHT-OF-WAY.
- ALL IRRIGATION PIPE LOCATED WITHIN CITY RIGHT-OF-WAY SHALL BE PVC C900 OR APPROVED EQUAL
- ALL JOINTS THROUGHOUT CASING SHALL BE RESTRAINED WITH FIELD LOC INTERNAL RESTRAINTS OR APPROVED EQUAL.
- RESTRAIN CARRIER PIPE ONE JOINT BEYOND END SEALS.
- MANUFACTURED CASING SPACER INTERVAL PER MANUFACTURER'S SPECIFICATIONS BUT NOT MORE THAN 10- FEET. MINIMUM 3 SPACERS PER PIPE LENGTH.
- CASING SHALL BE WELDED STEEL OR DUCTILE IRON FOR INSTALLATIONS LESS THAN 3- FEET BELOW ROAD GRADE. CPE MAY BE SUBSTITUTED FOR AREAS OUTSIDE OF PAVED ROADWAY.
- CASING PIPE LENGTHS SHALL BE OF THE LONGEST AVAILABLE LENGTH OF PIPE FROM MANUFACTURER
- NON-WELDED STEEL CASING SHALL BE EXTERNALLY RESTRAINED AT ALL JOINTS OR FIELD LOK.
- 3M MARKER BALL TO BE PLACED DIRECTLY ABOVE JOINT RESTRAINT AT END OF PIPE.
- DETECTABLE MARKER TAPE TO BE INSTALLED 12-INCHES TO 14-INCHES ABOVE PIPE CASING. COLOR SHOULD BE ACCORDING TO APWA UNIFORM COLOR CODE FOR MARKING UNDERGROUND UTILITIES. DETECTABLE MARKING TAPE SHALL CONSIST OF INERT POLYETHYLENE PLASTIC THAT IS IMPERVIOUS TO ALL KNOWN ALKALIS, ACIDS, CHEMICAL REAGENTS, AND SOLVENTS LIKELY TO BE ENCOUNTERED IN THE SOIL, WITH A METALLIC FOIL CORE TO PROVIDE FOR THE MOST POSITIVE DETECTION AND PIPELINE LOCATION. DETECTABLE MARKING TAPE SHALL BE NO LESS THAN 2-INCHES WIDE, TYPE OF BURIED UTILITY SHOULD BE CLEARLY MARKED CONTINUOUSLY ALONG THE LENGTH OF THE RIBBON WITH MINIMUM 1-1/2 INCH LETTERS IN THE FOLLOWING FORMAT: "CAUTION BURIED (UTILITY TYPE) LINE"



CASING SPACERS DETAIL
NTS



NON WELDED JOINT DETAIL
NTS



SPACER DISTANCE FROM BELL DETAIL
NTS

STANDARD DETAIL
CARRIER PIPE



SCALE: AS SHOWN	DATE DRAWN	REVISIONS				
		DATE	INITIAL	BY	CHKD	DATE APPROVED
DESIGNED	2/21/2006	12/20/2017	JBV	CAW		
DRAWN		10/27/2020	CAW	AJS		
APPROVED BY		01/01/2022	AJS	JTB		
		03/31/2023				