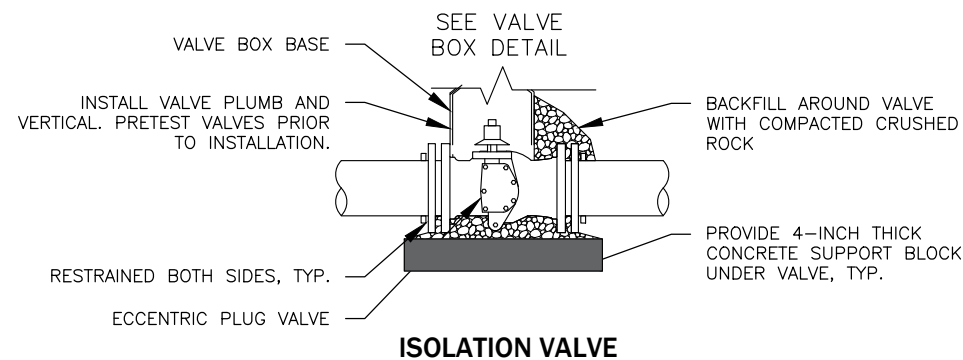
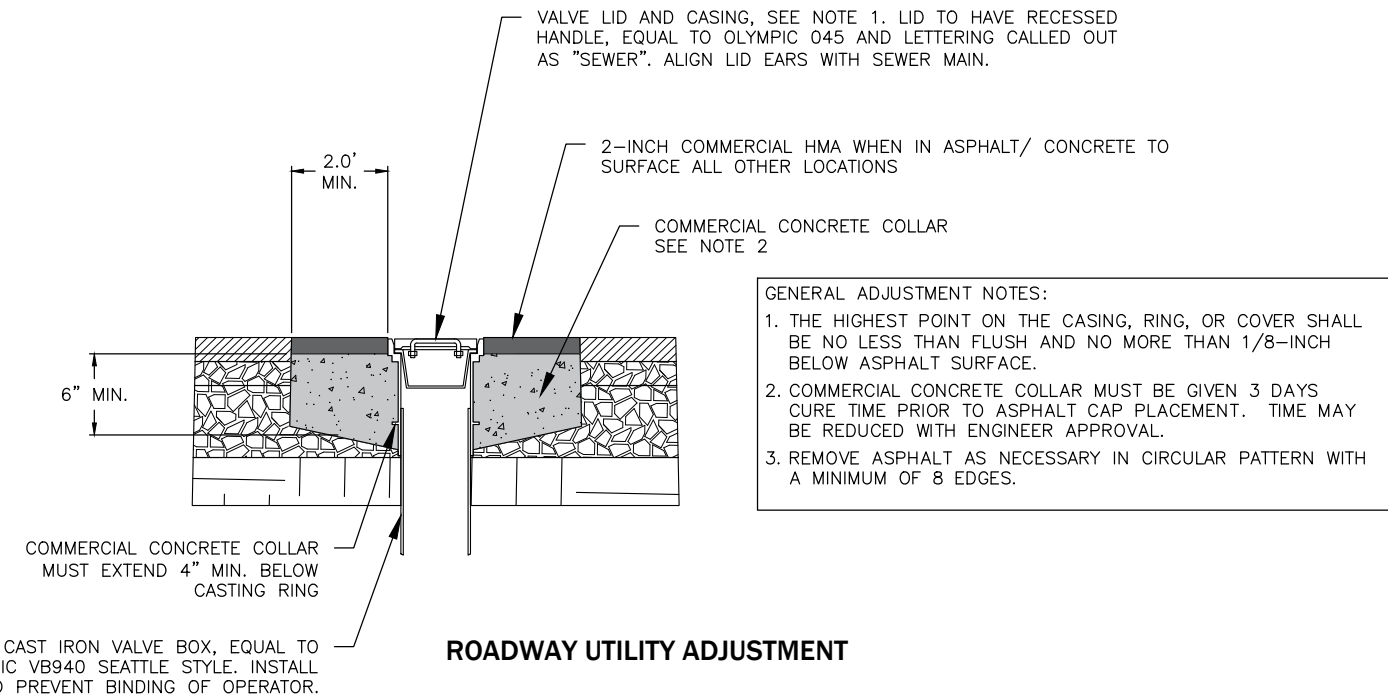


PIPE SUPPORT DETAIL



ISOLATION VALVE



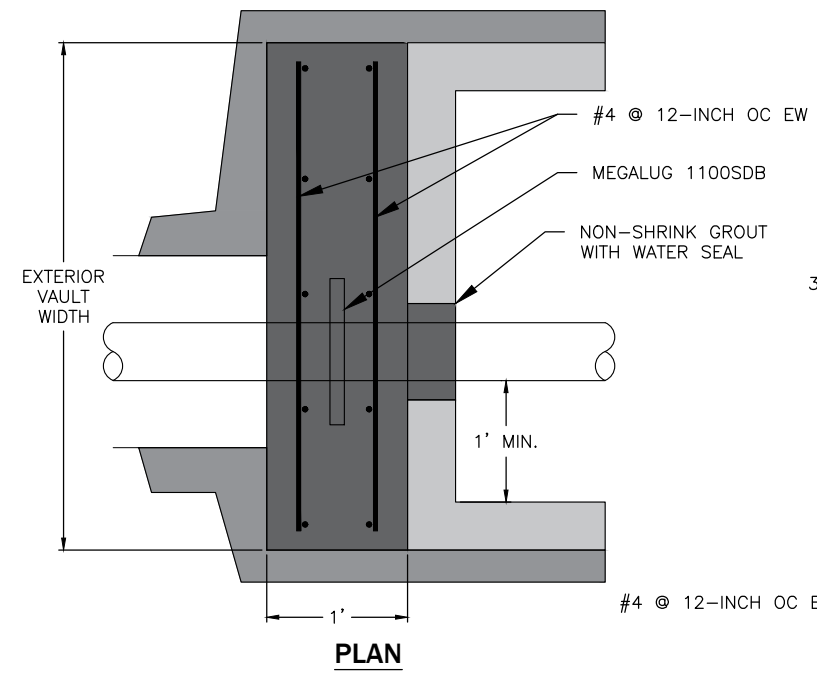
ROADWAY UTILITY ADJUSTMENT

GENERAL ADJUSTMENT NOTES:

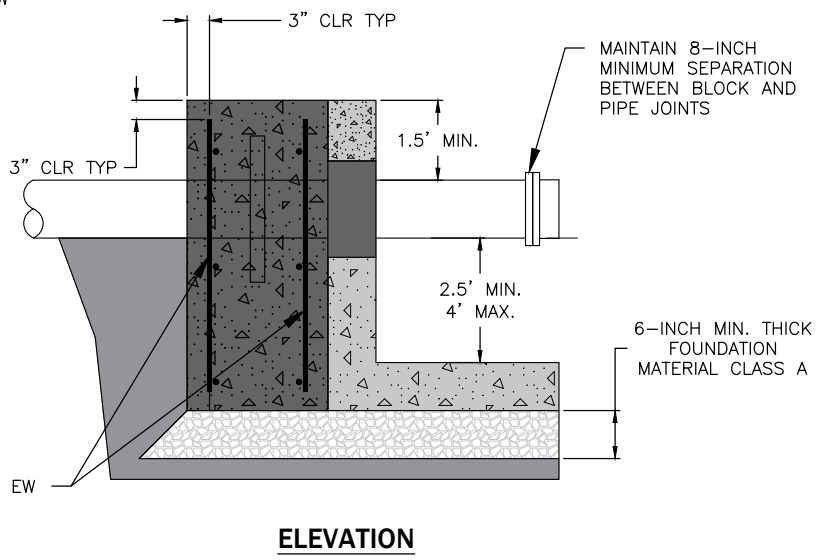
1. THE HIGHEST POINT ON THE CASING, RING, OR COVER SHALL BE NO LESS THAN FLUSH AND NO MORE THAN 1/8-INCH BELOW ASPHALT SURFACE.
2. COMMERCIAL CONCRETE COLLAR MUST BE GIVEN 3 DAYS CURE TIME PRIOR TO ASPHALT CAP PLACEMENT. TIME MAY BE REDUCED WITH ENGINEER APPROVAL.
3. REMOVE ASPHALT AS NECESSARY IN CIRCULAR PATTERN WITH A MINIMUM OF 8 EDGES.

NOTES:

1. LADDERS SHALL BE ALUMINUM.
2. LADDER MUST MEET CONSTRUCTION REQUIREMENTS OF ANSI A14.3

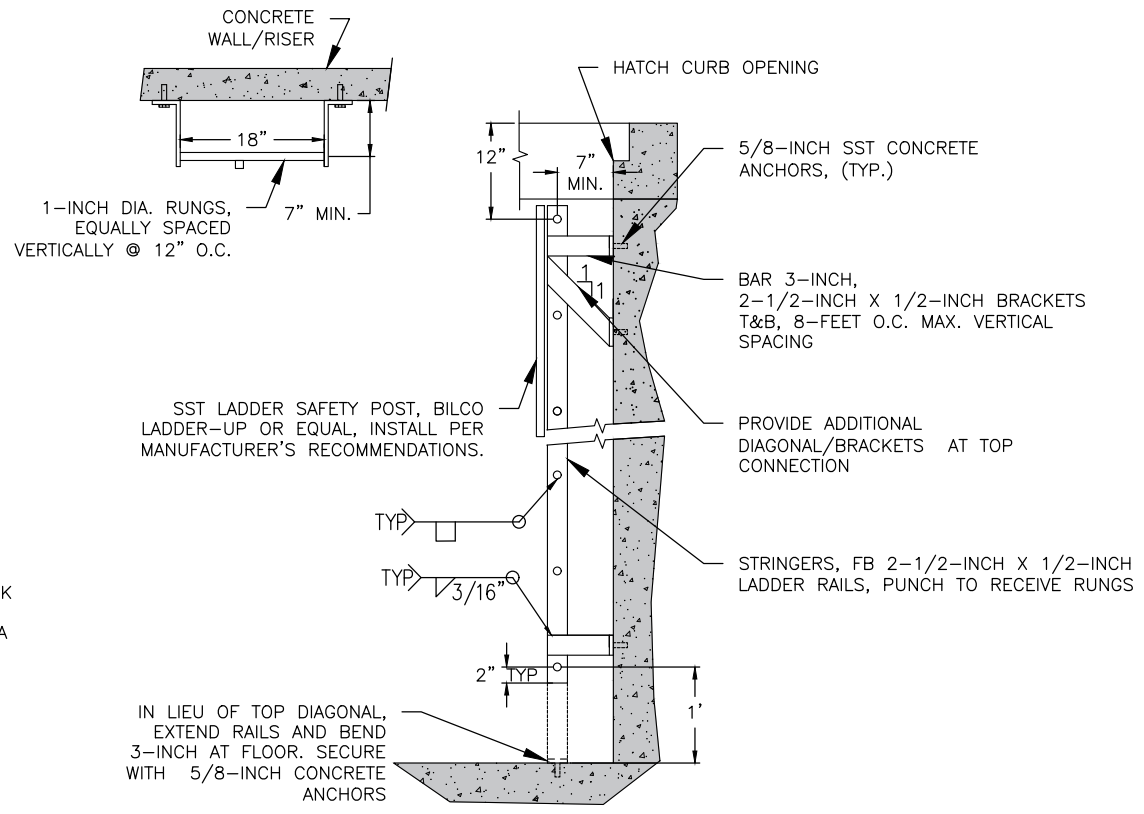


PLAN



ELEVATION

PIPE RESTRAINT



LADDER DETAIL FOR ELECTROMAGNETIC METER

**STANDARD DETAIL
ELECTROMAGNETIC SEWAGE
FLOW METER DETAILS**



SCALE:	AS SHOWN	DESIGNED	DRAWN	CHECKED	DATE DRAWN	REVISIONS		
						DATE	INITIAL	BY
	NA				12/21/2020	CAW		
					01/01/2022	AIS		
					03/31/2023	JTB		