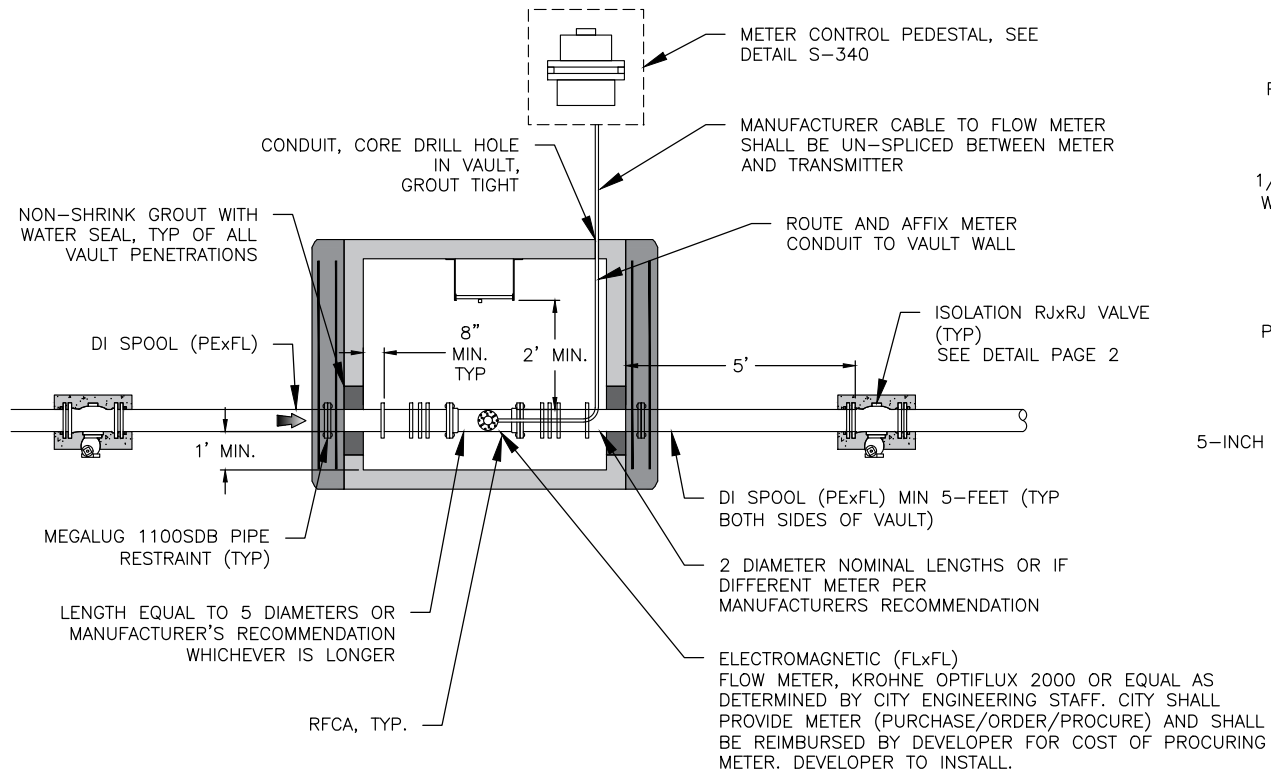
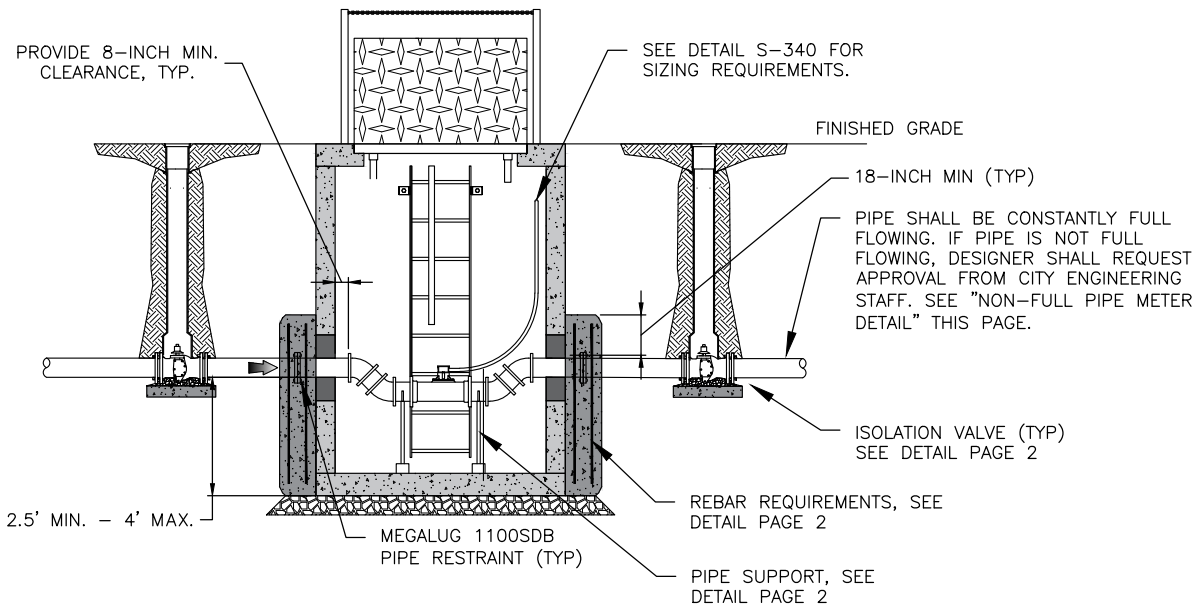


ELECTROMAGNETIC METER NOTES	
MATERIAL – PIPELINE	PIPING SHALL BE DUCTILE IRON
COATINGS – PIPELINE	EXTERNAL PIPE COATINGS – PIPE SHALL BE COATED WITH: PRIMER, SERIES 1 OMNITHANE (2.5 TO 3.5 MIL DFT); INTERMEDIATE COAT, SERIES N69 HI-BUILD EPOXOLINE II (6 TO 8 MILS DFT); FINISH COAT, SERIES 73 ENDURA-SHIELD (3 TO 5 MILS DFT). PIPE OUTSIDE VAULT SHALL BE ASPHALTIC COATED FOR BURY. INTERNAL PIPE COATINGS – CEMENT MORTAR LINED FROM ISOLATION VALVE TO ISOLATION VALVE.

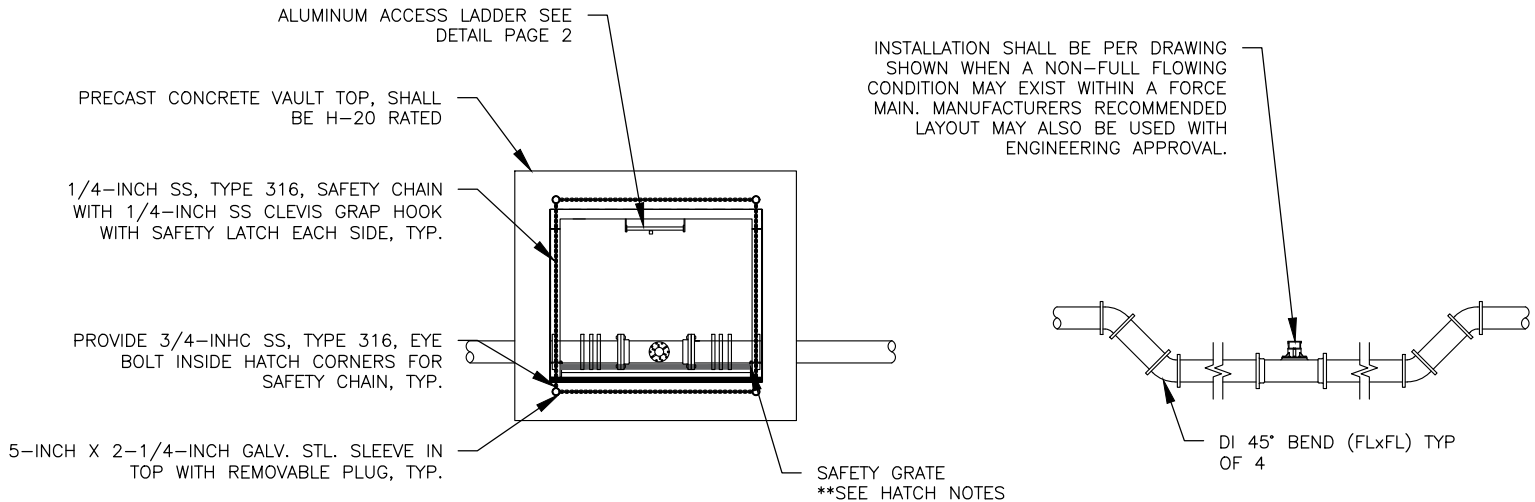
METER VAULT SIZING			
METER SIZE	INTERIOR VAULT (MIN) (WIDTH x LENGTH)	HATCH (MIN)	LEAF
3"	5'-6" x 6'-4"	36"x48"	1
4"	5'-6" x 6'-4"	36"x48"	1
6"	6'-4" x 6'-4"	48"x60"	2
8"	6'-4" x 6'-4"	48"x60"	2



**ELECTROMAGNETIC METER PLAN**



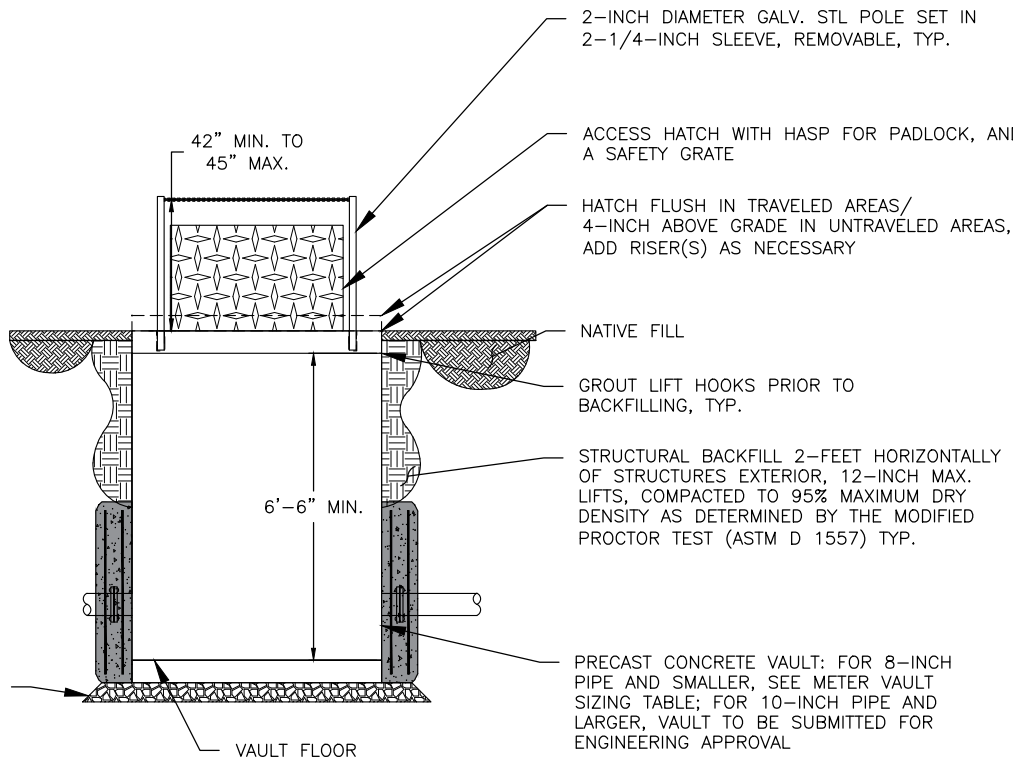
**ELECTROMAGNETIC METER ELEVATION**



**METER VAULT STRUCTURAL PLAN**

METER VAULT ACCESS HATCH	
CLEAR OPENING	SEE TABLE
NO. OF LEAVES	SEE TABLE
RATING	H-20
MOUNTING*	ANCHOR
SAFETY GRATING**	YES
SAFETY CHAIN***	YES
GASKET	ODOR TIGHT
DRAIN	NO
SPRING ASSIST	YES

**ACCESS HATCH NOTES:**  
 \* ACCESS HATCH OVER METER VAULT SHALL BE MOUNTED USING STAINLESS STEEL BOLTS AS SHOWN ON THIS PLAN.  
 \*\*ACCESS HATCH SHALL HAVE REMOVABLE SAFETY GRATING COVER BELOW ACCESS HATCH LID.  
 \*\*\* SAFETY CHAINS SHALL BE PROVIDED ON ACCESS HATCHES AS DETAILED FOR EACH HATCH ON THIS SHEET.  
 \*\*\*\*ACCESS HATCH TO HAVE HASP FOR PADLOCK



**METER VAULT STRUCTURAL ELEVATION**

**STANDARD DETAIL  
ELECTROMAGNETIC  
SEWAGE FLOW METER**



SCALE: AS SHOWN	DESIGNED BY	DRAWN	CHECKED	DATE APPROVED	REVISIONS				
					DATE	INITIAL	CAW	AJS	JTB
					12/21/2020				
					01/01/2022				
					03/31/2023				