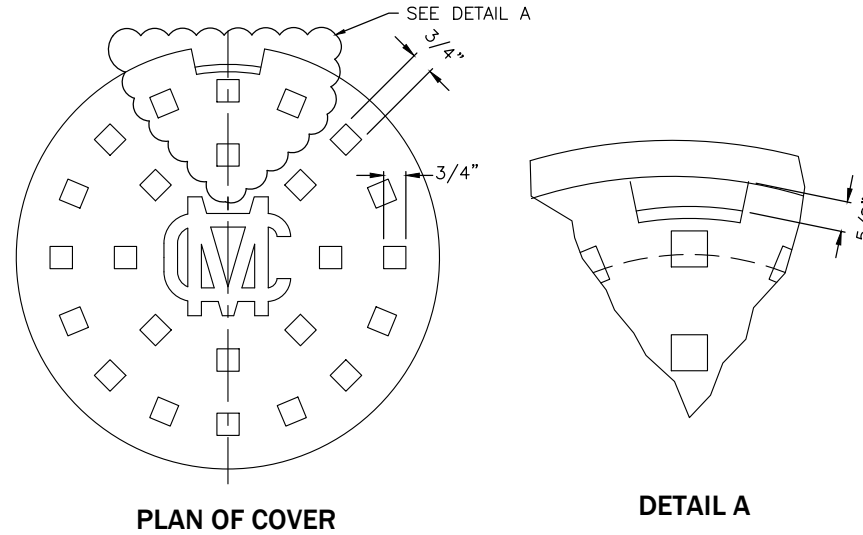
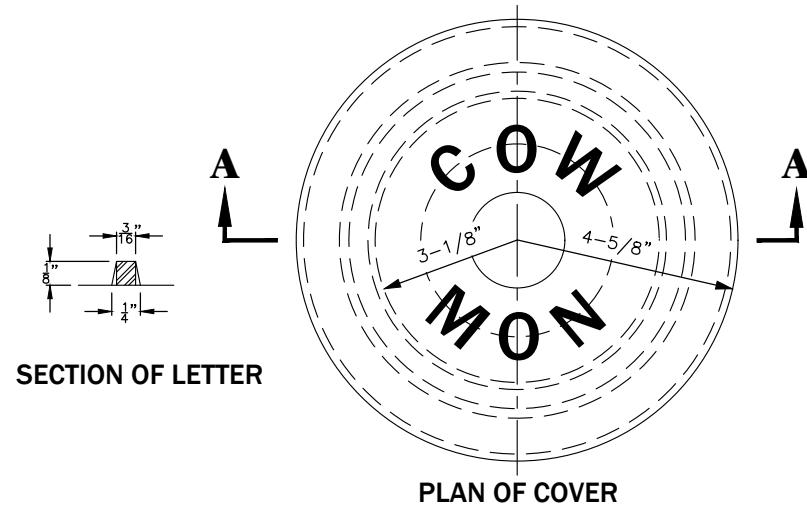


STANDARD MONUMENT CASE

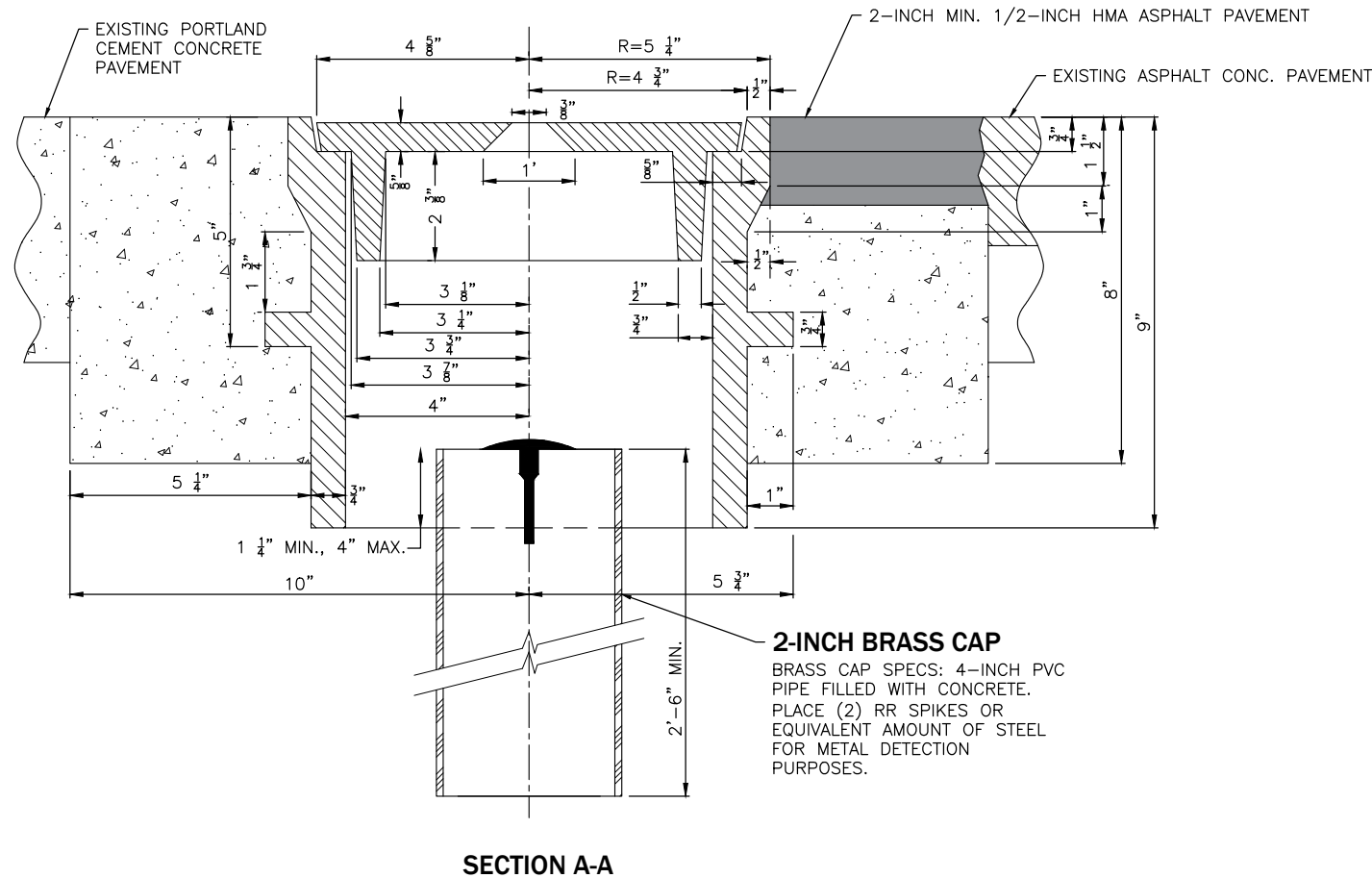
**ALTERNATE MONUMENT CASE
MAY BE USED WITH CITY ENGINEERS
APPROVAL**



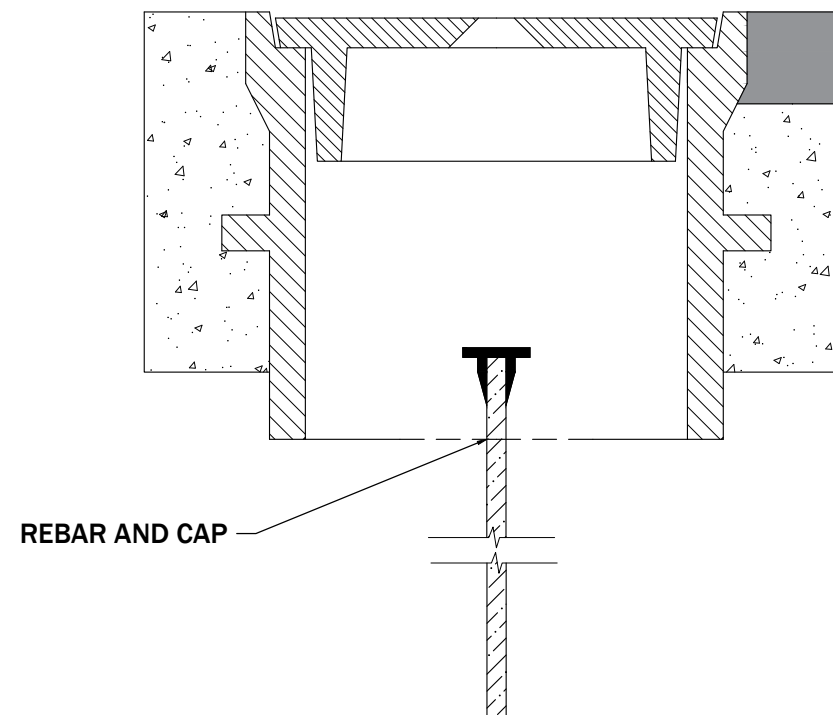
NOTES:

1. 2-INCH BRASS CAP OR REBAR AND CAP ARE ACCEPTABLE FOR USE IN MONUMENT CASE.
2. WHEN PLACING MONUMENTS IN PAVED SURFACES, HEIGHT OF CASE OR COVER SHALL BE NO LESS THAN ZERO AND NO MORE THAN 1/8-INCH BELOW FINISHED GRADE.
3. MEETS CITY OF WENATCHEE AND WASHINGTON STANDARD SPECIFICATIONS FOR MONUMENT CASE AND COVER. SUITABLE FOR HEAVY TRAFFIC LOADING. UNIT WEIGHT 39LBS.
4. MONUMENTS SHALL BE PROTECTED FROM DAMAGE ACCORDING TO R.C.W. 58.24.040, AND R.C.W. 58.09.130. IF MONUMENTS ARE TO BE DISTURBED, THEN W.A.C. 332-120 APPLIES.
5. CASTING SHALL BE GRAY IRON ASATM A48, AASHTO M 105, CLASS 30.
6. COVER AND SEAT SHALL BE MACHINED FOR PERFECT CONTACT AROUND CIRCUMFERENCE AND FULL WIDTH OF BEARING SURFACE.
7. APPROXIMATE WEIGHTS, STANDARD.
CASE - 60 LBS
COVER - 19 LBS
TOTAL - 79 LBS
8. CONCRETE SHALL BE CLASS 3000.
9. PIPE MUST BE INSTALLED PRIOR TO ROAD SURFACING.

**CASE 1: 2-INCH BRASS CAP
SEE NOTE 1**



**CASE 2: REBAR AND CAP
SEE NOTE 1**



**STANDARD DETAIL
MONUMENT CASE**



| SCALE: AS SHOWN | DESIGNED | DRAWN | CHECKED | DATE DRAWN | REVISIONS | | | |
|-----------------|----------|-------|---------|------------|------------|---------|----|------|
| | | | | | DATE | INITIAL | BY | DATE |
| | | RLK | SK | 02/21/2006 | 12/21/2020 | CAW | | |
| | | | | | 01/01/2022 | AIS | | |
| | | | | | 03/31/2023 | JTB | | |

DETAIL NO.
R-710

PAGE
1 OF 1