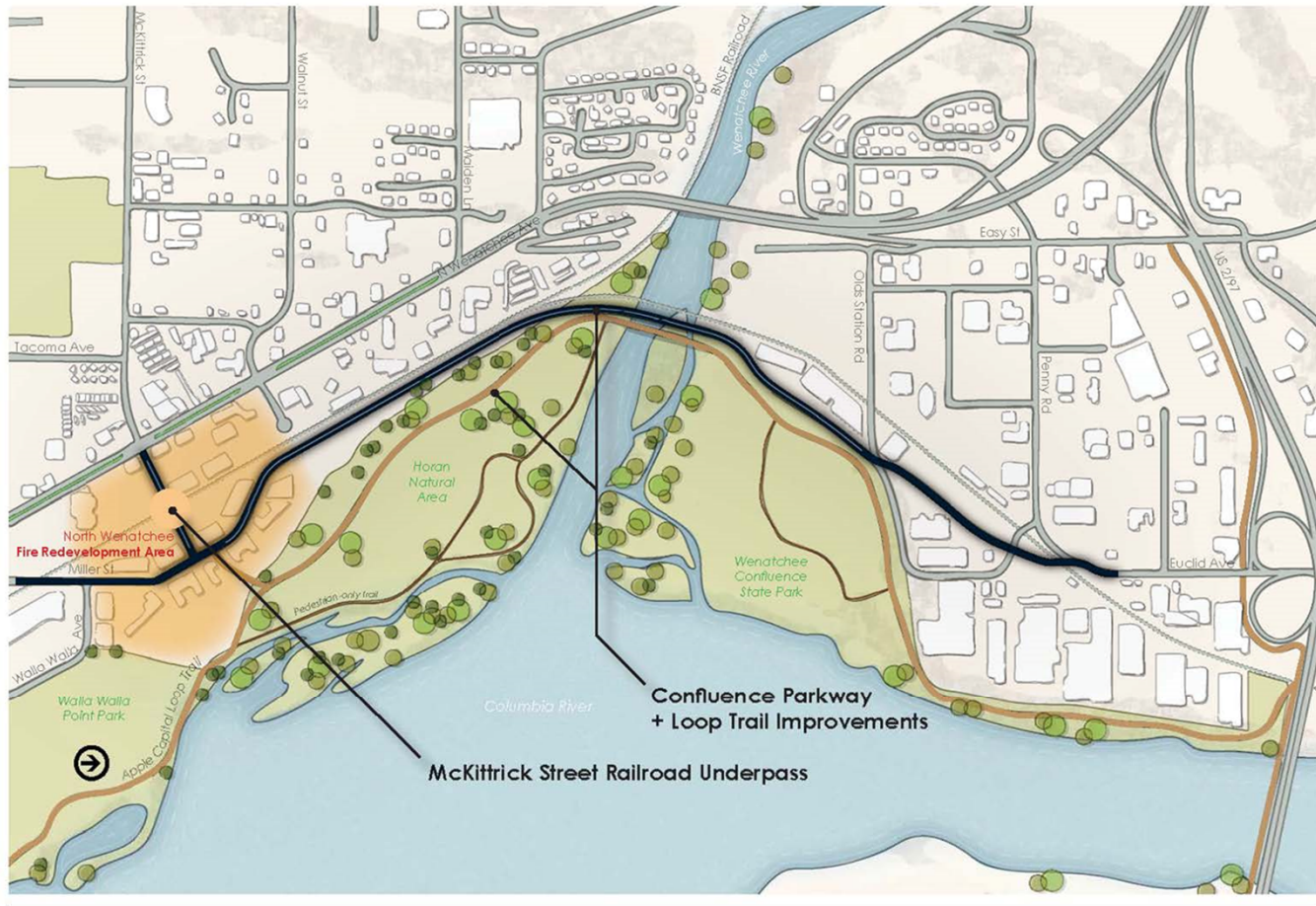


# Confluence Parkway

Presented by  
Steve King and Derek Koellmann  
April 10, 2019

# Welcome – Mayor Kuntz



**Confluence Parkway / North Wenatchee Avenue Bypass**

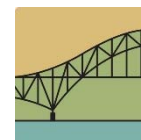


# Introduction



# Agency Project Partner Introductions

- Chelan-Douglas Transportation Council
- Chelan County Public Utility District
  - Washington State Parks
- Link Transit
- Washington State Department of Transportation
- Federal Highway Administration



**Chelan-Douglas**  
TRANSPORTATION COUNCIL

# Many Project Supporters

- Wenatchee Valley Museum
- Chamber of Commerce
- TREAD
- Our Valley Our Future
- Friends of the Horan
- Wenatchi/P'Squosa Elder Randy Lewis
- Native River Fund
- See [www.applecapitalloop.info](http://www.applecapitalloop.info)

Completing the  
**Apple Capital Loop**



City of Wenatchee INFRA FY 2019 Application  
DUNS: 07-5746545 • NSFHP-19-INFRA-19



# Meeting Purpose

- Create an understanding of the project
- Share the NEPA process and what is ahead
- Seek involvement from community and determine interested parties

# Meeting Agenda

- Project overview
- NEPA process
- Share known key environmental concerns
- Public involvement
- Breakout discussions

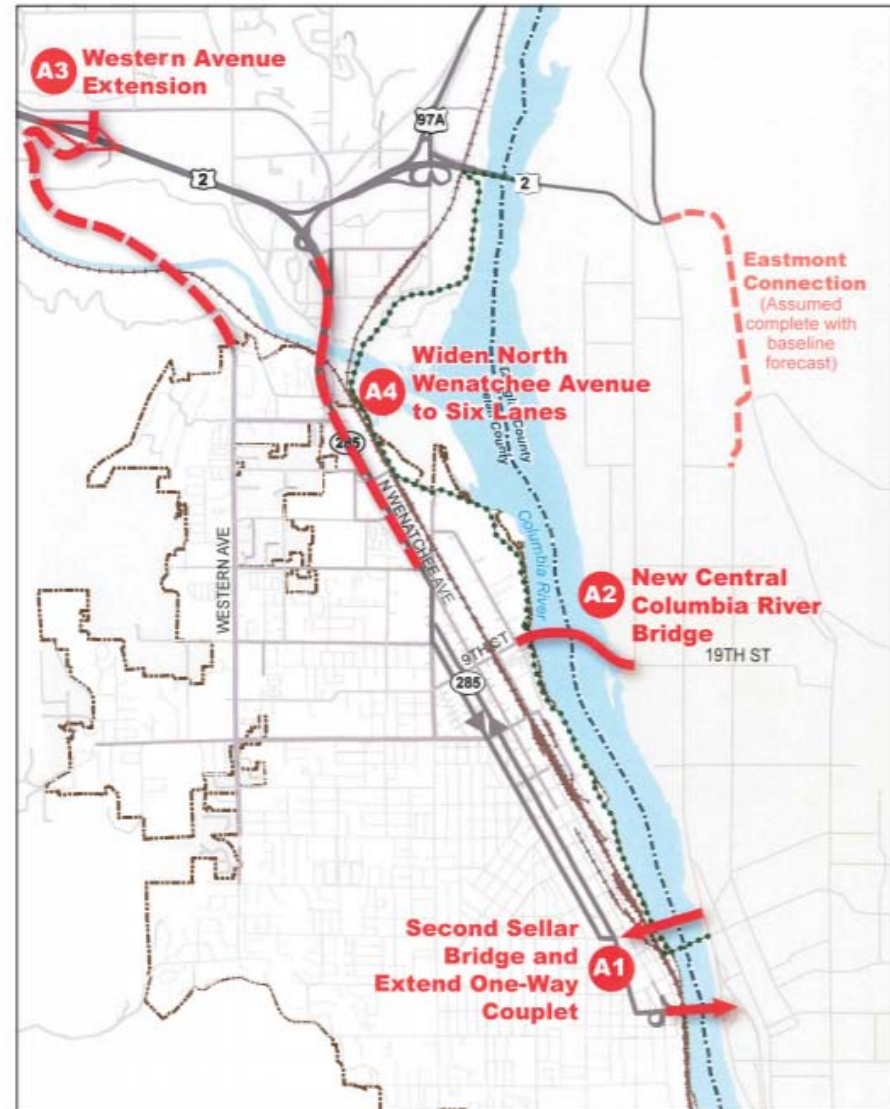
# Project Overview



# History

- North Wenatchee Transportation Master Plan (2011)
- Why Confluence Parkway?

A bypass to North Wenatchee Avenue



Source:  
Transpo, North Wenatchee Transportation Master Plan (2010)

Figure A-1  
Initial Concepts Considered in  
North Wenatchee Transportation Master Plan

# Purpose and Need of the Project

- Provide multi-modal capacity to relieve congestion and meet travel demands
- Improve and sustain the viability of the Apple Capital Loop
- Improve safety for residents and roadway users
- Provide an alternate access point to serve as an evacuation route in the case of emergency
- Provide improved transit operations
- Support the viability of the business district and support economic development on the North Wenatchee Corridor
- Improve rail and roadway user interactions and safety
- Provide access to pedestrian, bicycle, recreational, and cultural facilities along the Wenatchee Waterfront

# Confluence Parkway – Let's take a tour



# Project Details – Let's take a tour



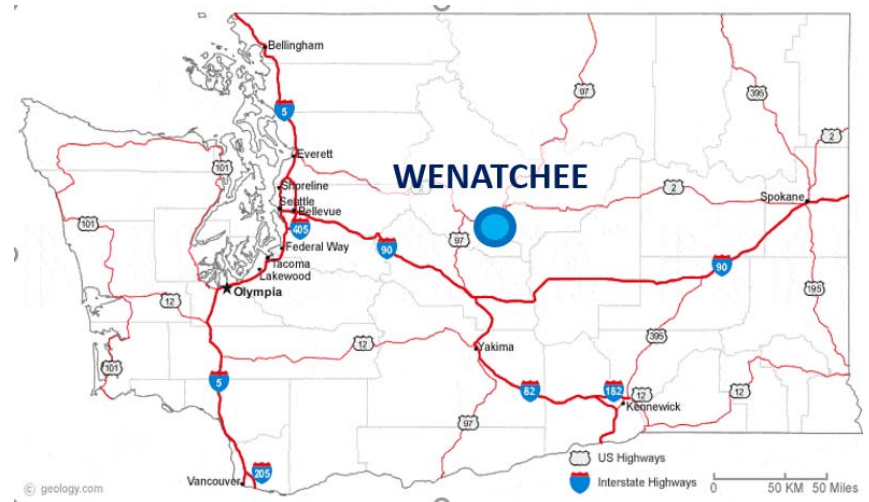
# Related Projects

- North Wenatchee Avenue
- US2 – Easy St. Intersection
- New McKittrick Street Signal



# Work Completed to Date

- NEPA pre-assessment
- Updated preliminary design
- NEPA initiation to establish appropriate NEPA process
- Grant funding (2 prong approach)
  - Federal INFRA:  
[www.applecapitalloop.info](http://www.applecapitalloop.info)
  - State of Washington



# Confluence Parkway Schedule

- Timeline submitted in INFRA Grant Application (Subject to funding)
  - Complete Environmental Review November of 2021
  - Begin Construction 2023
  - Schedule may change based on funding and phasing

# NEPA Process



## Upcoming steps

- Continue to refine design
- Initially focus on baseline studies for park and cultural resources
- Make NEPA decision determination
- Develop NEPA documentation

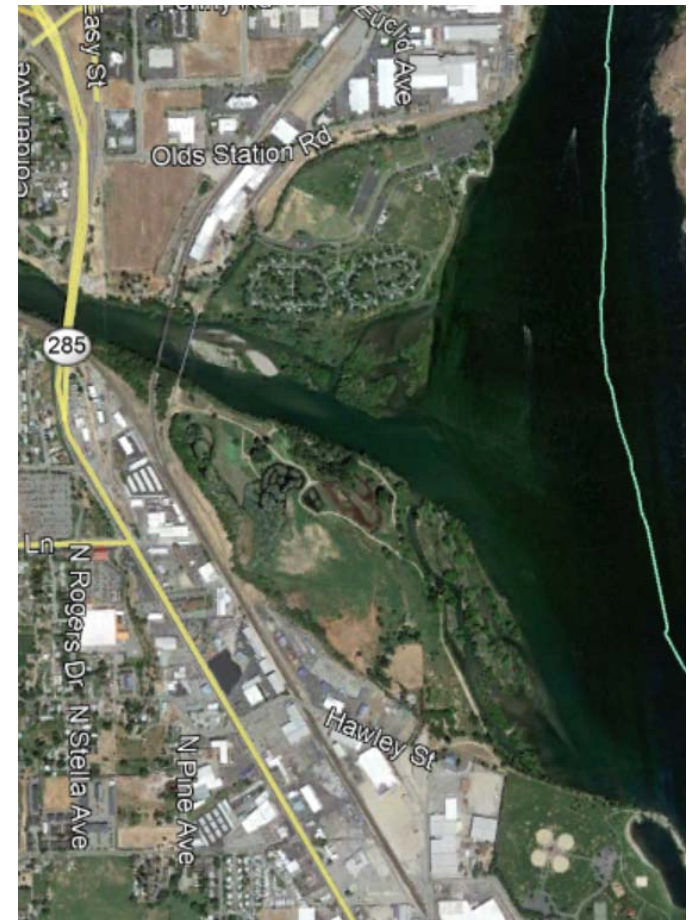
# NEPA Process Overview

- Identify project elements
- Identify potential impacts from project
- Identify mitigation measures
- Work with stakeholders and the public
- Determine level of NEPA documentation
- Develop documentation
- Obtain federal concurrence

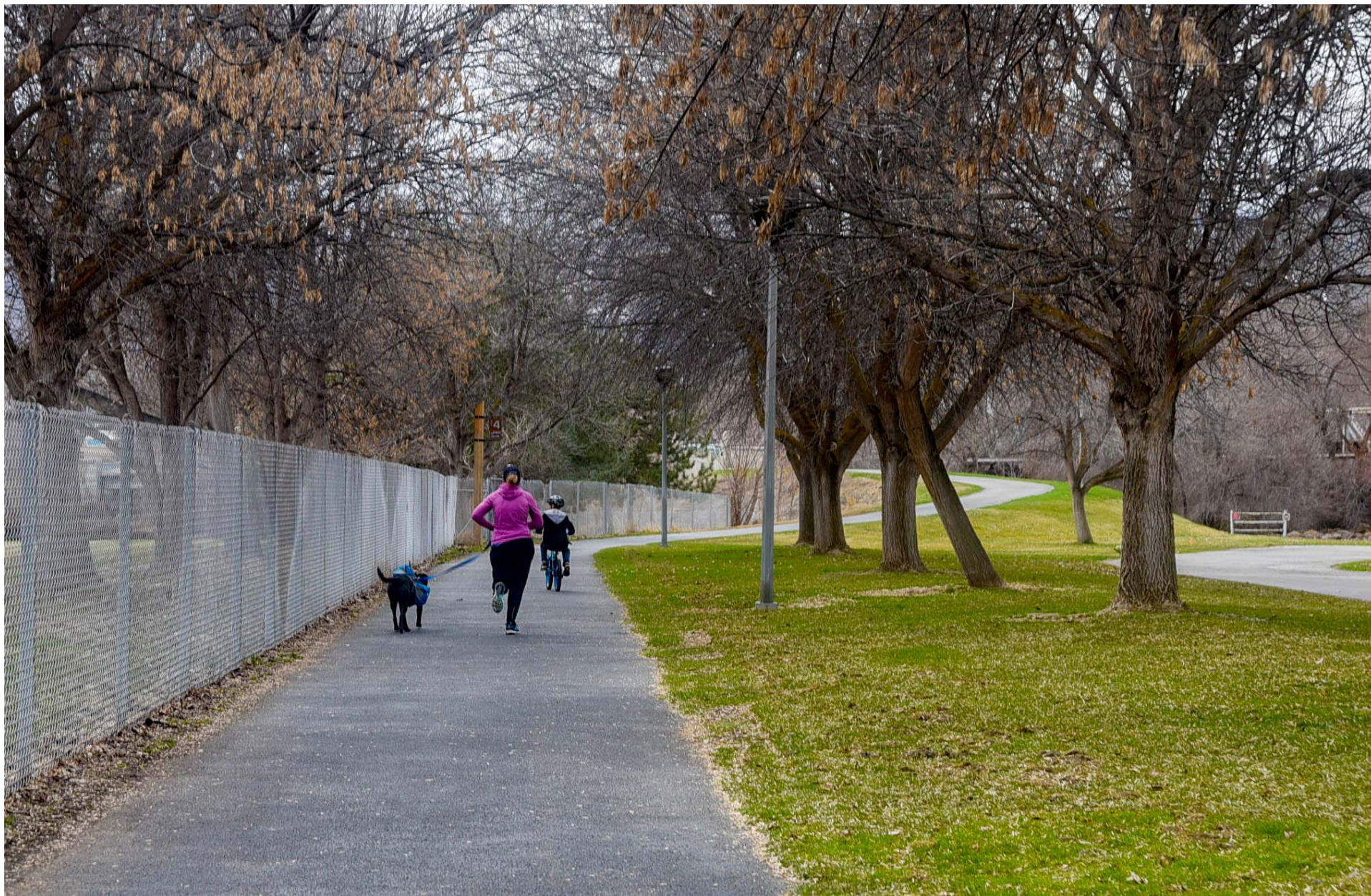
# Known Potential Environmental Impacts

# Known Areas of High Concern

- Traffic Impacts (Noise/Lights)
- Aesthetics
- Confluence Park
- Apple Capital Loop Trail
- Cultural resources
- Horan Area (wetlands and flora)
- Fish and wildlife
- Traffic flow
- Other potential impacts



# Parks and Recreation (Apple Capital Loop Trail)



# Parks and Recreation



# Parks and Recreation



# Parks and Recreation

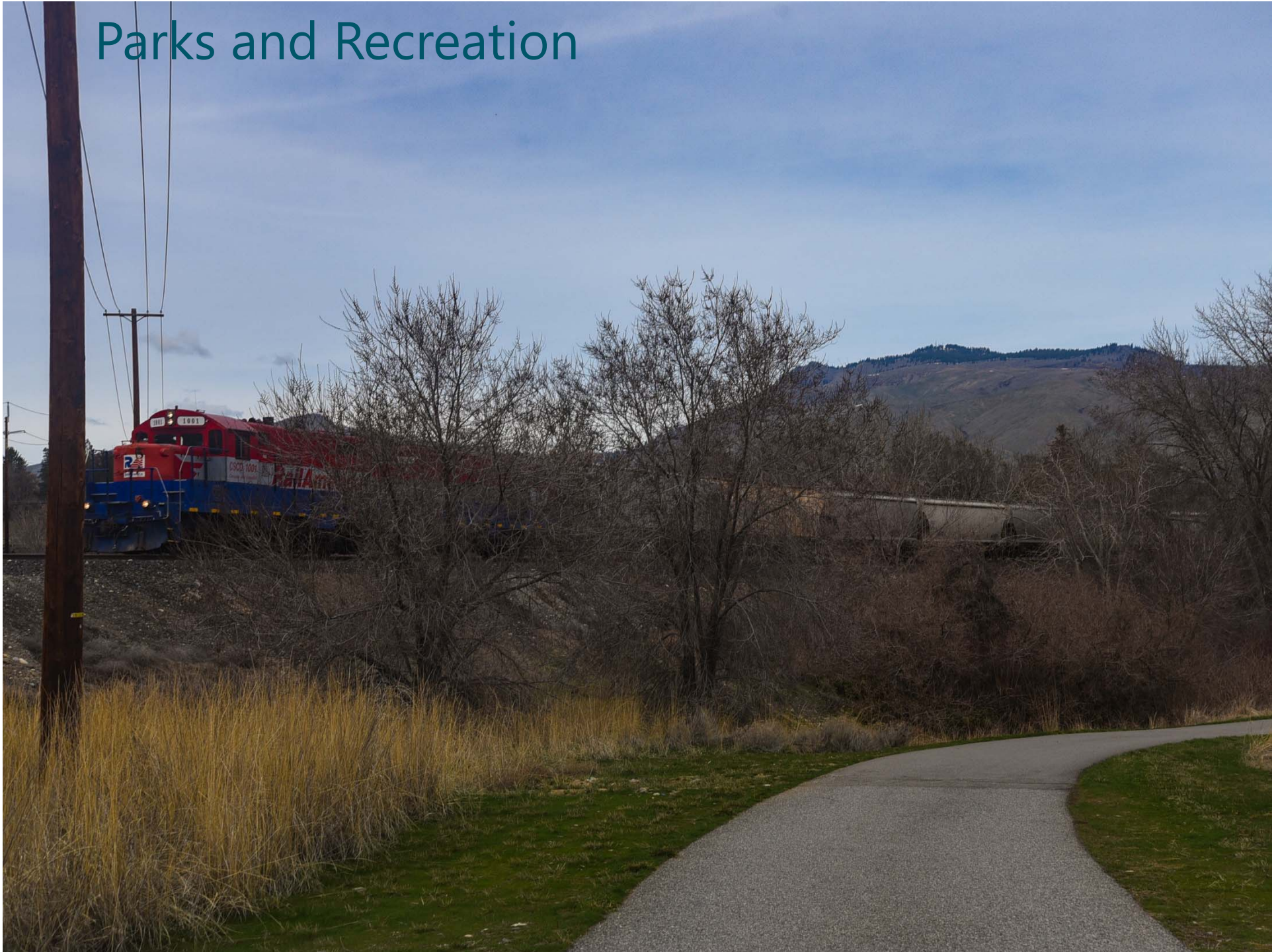




# Parks and Recreation



# Parks and Recreation



# Parks and Recreation



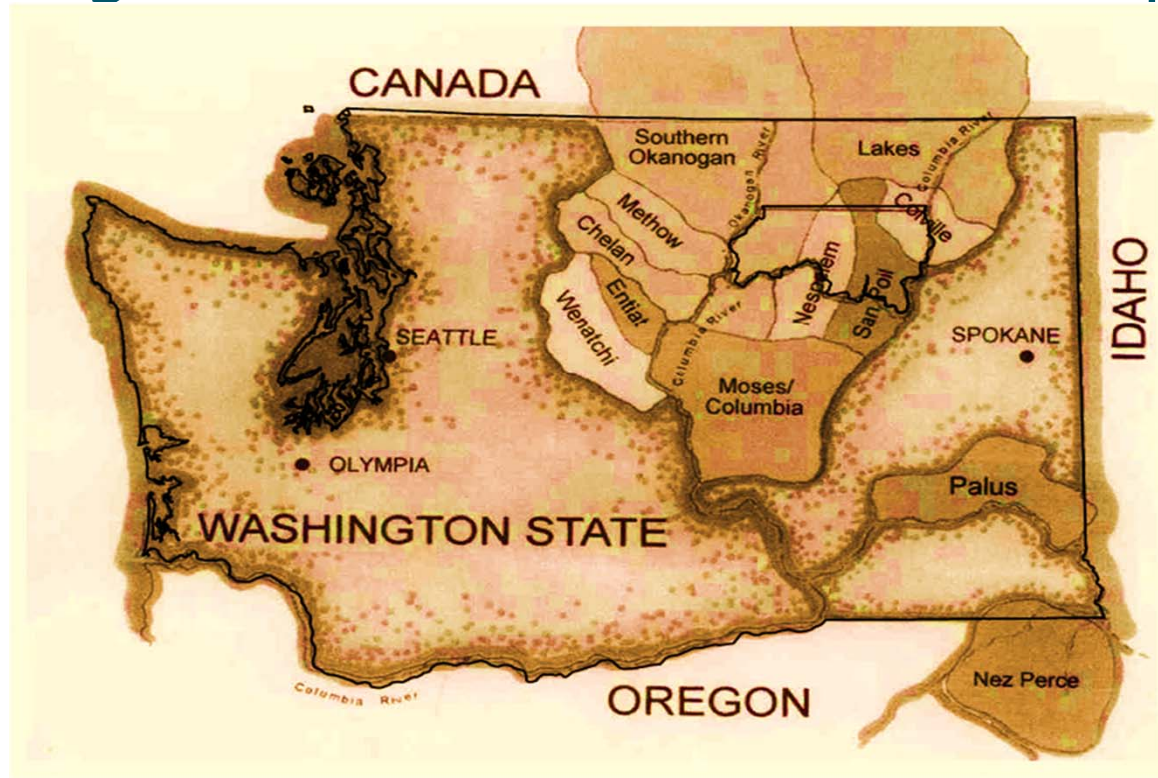
# Parks and Recreation



# Parks and Recreation



# Archaeologic Potential - Wenatchi – P'Squosa



# Archaeologic Potential Wenatchi – P'Squosa "Council Grounds"



Horse Racing Illustration, Century Magazine, 1886  
General C.E.S. Wood Report.

# Archaeologic Potential Miller – Freer Trading Post



**This is the south face of the Miller-Freer Trading Post. From left are Sam Miller, Lucy Freer, Hattie Freer, Mattie Freer, and Del Curry.**



# Horan Natural Area



# Horan Natural Area



# Horan Natural Area



# Horan Natural Area



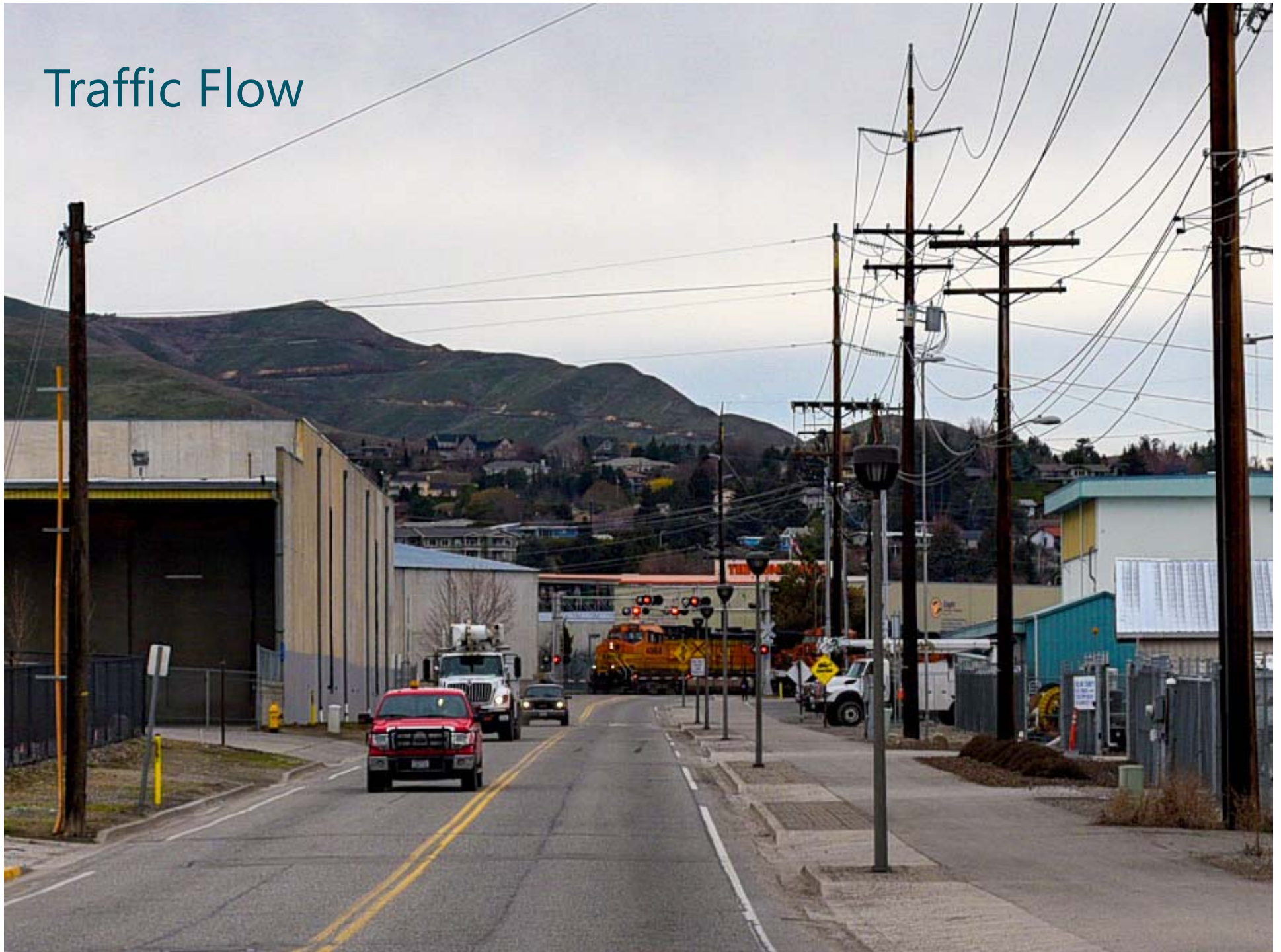
# Horan Natural Area



# Horan Natural Area



# Traffic Flow



# Traffic Flow





# Traffic Flow



# Traffic Flow



# Traffic Flow



Photo courtesy NCW Life

# Bicycle Commuting



# Public Involvement

## Levels of Public Involvement

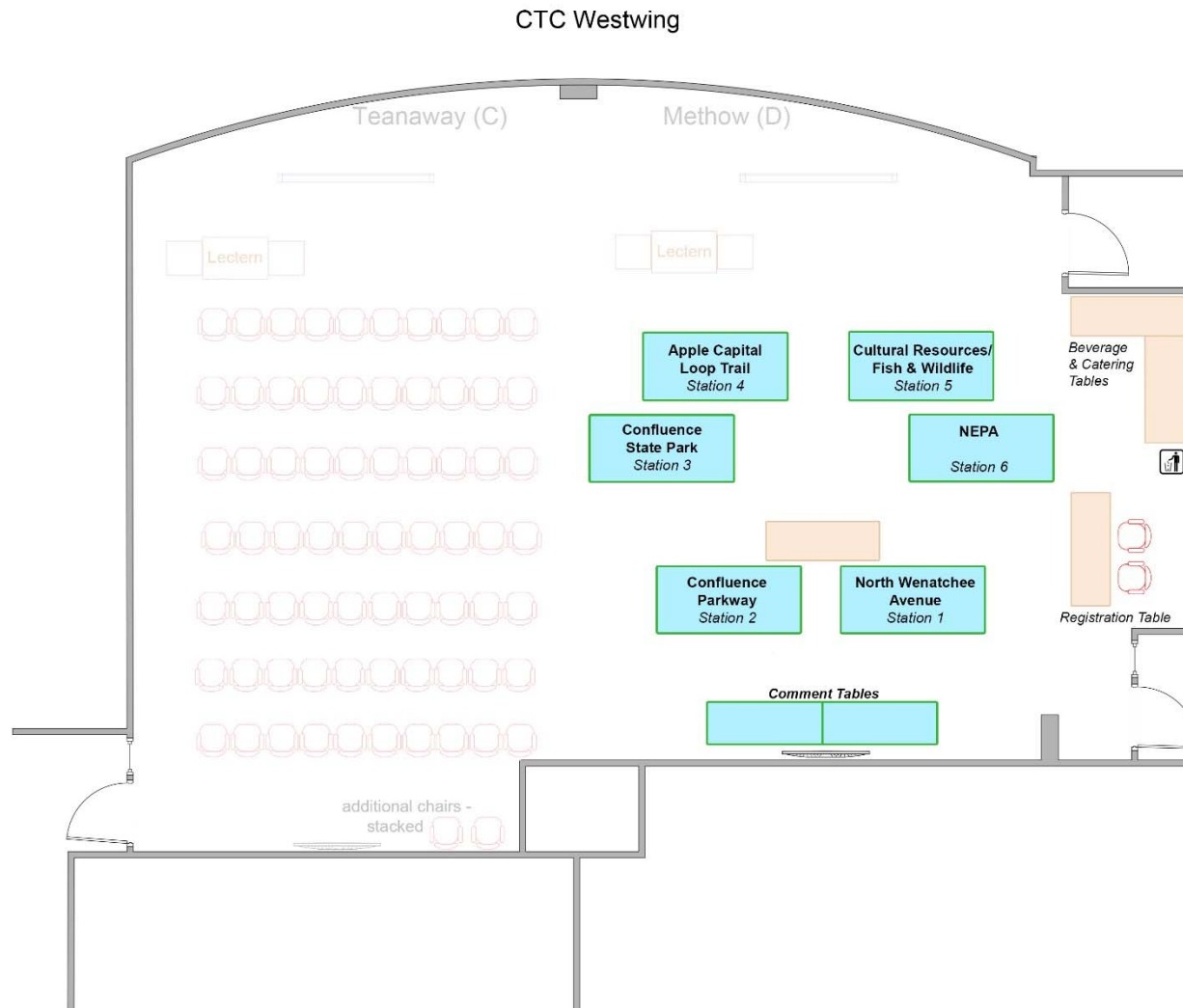
- Stay Informed – Receive Notices
- Participate through Stakeholders
- Attend future public meetings and review NEPA documents
- Actively support project similar to INFRA support
- <https://www.wenatcheewa.gov/confluenceparkway>

# Opportunities for Public Involvement

- Today
  - Opportunity for input on key project elements
- Ongoing
  - Provide comments on website
  - Progress meetings
- Moving forward
  - Opportunity to review NEPA document
  - SEPA review opportunity

This is your community, your transportation system, your parks, we welcome your help.

# Break





# Thank you!!

