

HOURS

Office hours are 7:00 a.m. to 3:30pm.

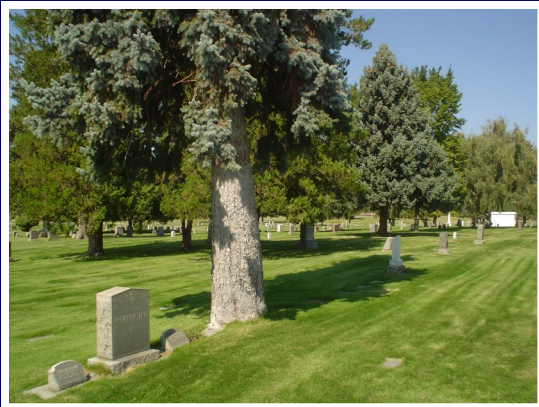
Cemetery grounds are open during daylight hours only.

Burials should be scheduled between 9:00 a.m. and 3:00 p.m. Monday through Friday.

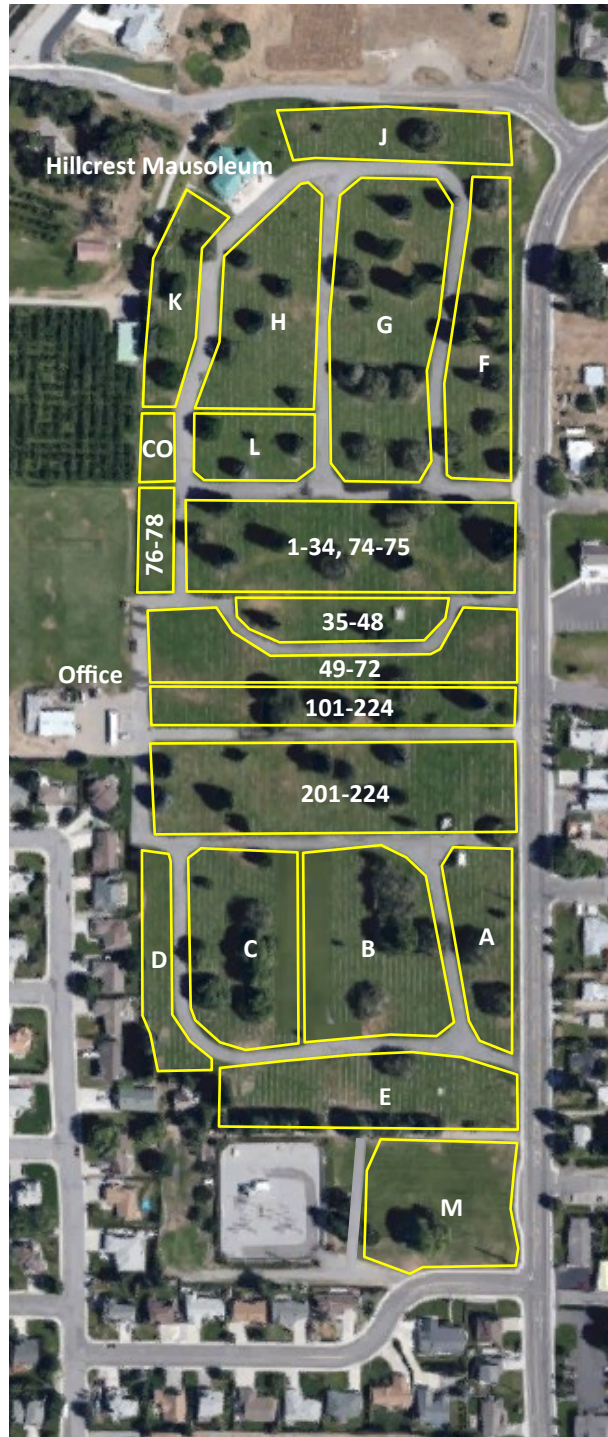
CHARGES

Because of the variety fees and charges and options that are available, please contact the Cemetery for specific details.

A current listing of the fees and charges may be downloaded from the City website: www.wenatcheewa.gov—Parks and Recreation Department, Fees and Charges Page.



A searchable map of the Cemetery is now available online :
www.wenatcheewa.gov



City of Wenatchee Cemetery and Mausoleum



1804 North Western Avenue
PO Box 519
Wenatchee, Washington 98807
(509) 888-3223
www.wenatcheewa.gov



HISTORY

The 33.7 acre Wenatchee Cemetery first operated as a private facility, with the earliest sales dating back to August 1895. Also beginning around 1895, remains from private burial grounds throughout the Wenatchee Valley were relocated to this new, permanent location.

In 1916 Members of Dan McCook Post #105 and the Women's Relief Corps #15, Department of Washington and Alaska erected a monument honoring Grand Army of the Republic veterans.

Affiliated with the Cemetery but located at 850 South Miller Avenue, is the Home Of Peace Mausoleum. It was constructed in 1916.

The private Cemetery operated on its own until it could no longer keep pace with demand and the growth of the community. In 1929, the City of Wenatchee acquired and began operating the facility.

In 1944 the property for the Veteran Memorial Section was purchased and developed. In 1948, the section was dedicated to all war veterans. The Veterans Memorial Monument was sponsored by the Veterans Organizations and Auxiliary Groups and unveiled on Memorial Day, 1953.

Located on the west side of the Cemetery is Babyland. This section was dedicated in 1947. Lullabyland is the newest baby section and is located at the North end of the Cemetery.

The Hillcrest Mausoleum was dedicated in 1963. It contains both crypts and cremation niches. A cremation niche wall is located southwest of the Mausoleum. It was created in 2006. In-ground cremation plots are also available in both Section F and the Veterans Section.

A new Cemetery office building was constructed in 2018.

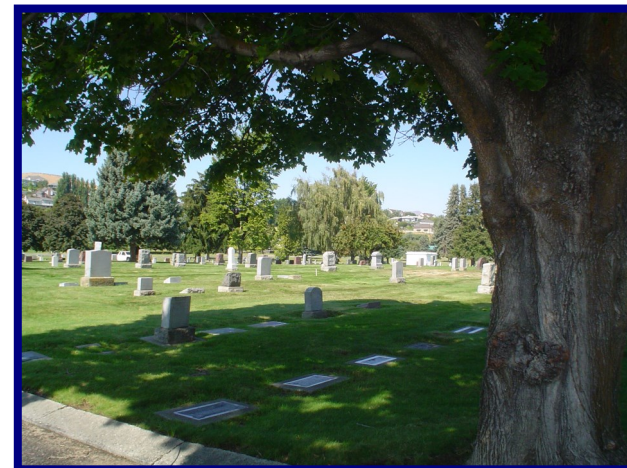
REGULATIONS

GENERAL REGULATIONS

- City Park Rules (WMC Section 6A.18) apply in the Cemetery unless otherwise indicated.
- City staff has the right to interpret and enforce all policies and procedure.
- The City is not responsible for any damage to monuments, markers, or other devices caused by time, war, acts of God, or vandalism. The City is only responsible for damage caused by the City staff.
- Vehicles must remain on paved road surfaces.
- Pets must be kept on a leash at all times. Handlers are responsible to clean and remove pet waste.

PLANTS AND DECORATIONS

- Only City staff may plant, trim or prune shrubs, flowers and trees.
- Only City staff may place monuments, markers and permanent flower vases.
- Flowers must be placed in a holder approved by the City. Digging is not allowed.
- When flowers are deemed unsightly by City staff, they may be picked up and disposed of along with their containers. If the container is a permanent part of the flower holder, it will be left.
- Glass containers are not allowed in the cemetery for flower or plant holders.
- Holiday decorations not collected by the family will be picked up and disposed of by City staff within 7 days following the holiday.
- Artificial grave decorations are not allowed from April 1 until November 1.
- Fences, plantings, hedges or other enclosures are not allowed on or around any graves or family plots.



FUNERALS

- All Funerals must be complete and all family, friends, guests, and other attendees departed from the cemetery grounds no later than 4:00pm weekdays and 12:00pm Saturday to allow time to close the grave site. Saturday graveside services may begin no later than 10:00am.
- Arrangements must be made for a witnessed lowering at least 24 hours in advance. A small amount of dirt will be available to sprinkle on casket. Witnesses will depart graveside area prior to lidding of outer burial container.
- A licensed funeral director must be present until all family has left and casket is in burial container.
- **Funeral home or family must provide adequate personnel to place casket on lowering device. The City does not provide staff for this function.**
- Scattering of cremains is not allowed.
- Only City staff may open and close a grave, place monuments, markers and permanent flower vases.
- A maximum of one marker is allowed on a cremation grave. A maximum of one marker are allowed on a full burial grave.
- Cemetery staff must receive notice a minimum of 48 hours prior to any proposed funeral.