

LUMINAIRE POLE DETAIL:

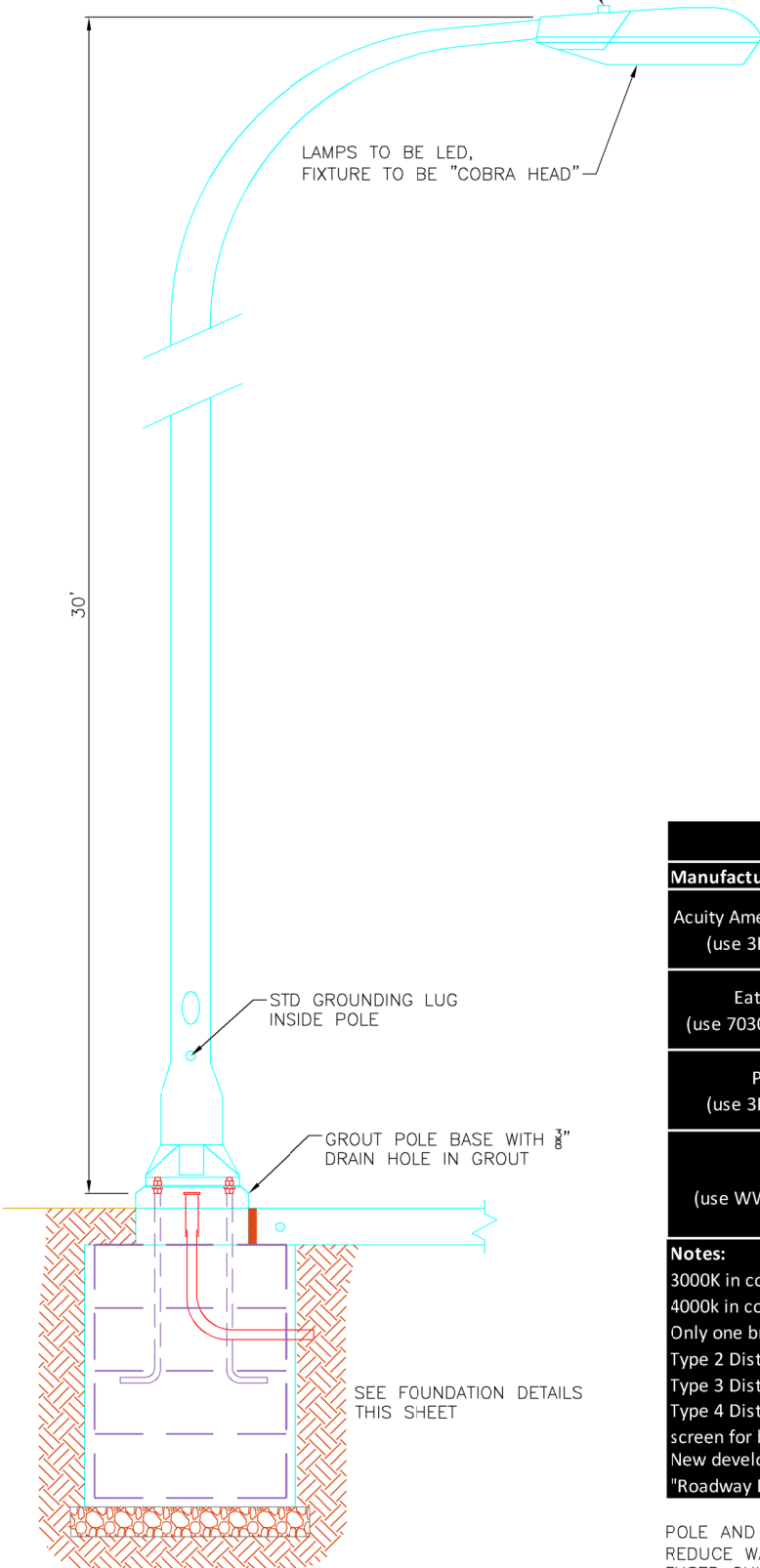
POLE MUST BE UL LISTED AND BE LABELED AS SUCH

- HAPCO # RTA30D8B4D1601 (6' ARM)
- OR
- HAPCO # RTA30D8B4D1801 (8' ARM)
- OR
- HAPCO # RTA30D8B4D1A01 (10' ARM)

DAVIT STYLE (OR MATCH EXISTING STYLE POLES WITH APPROVAL OF CITY ENGINEER)

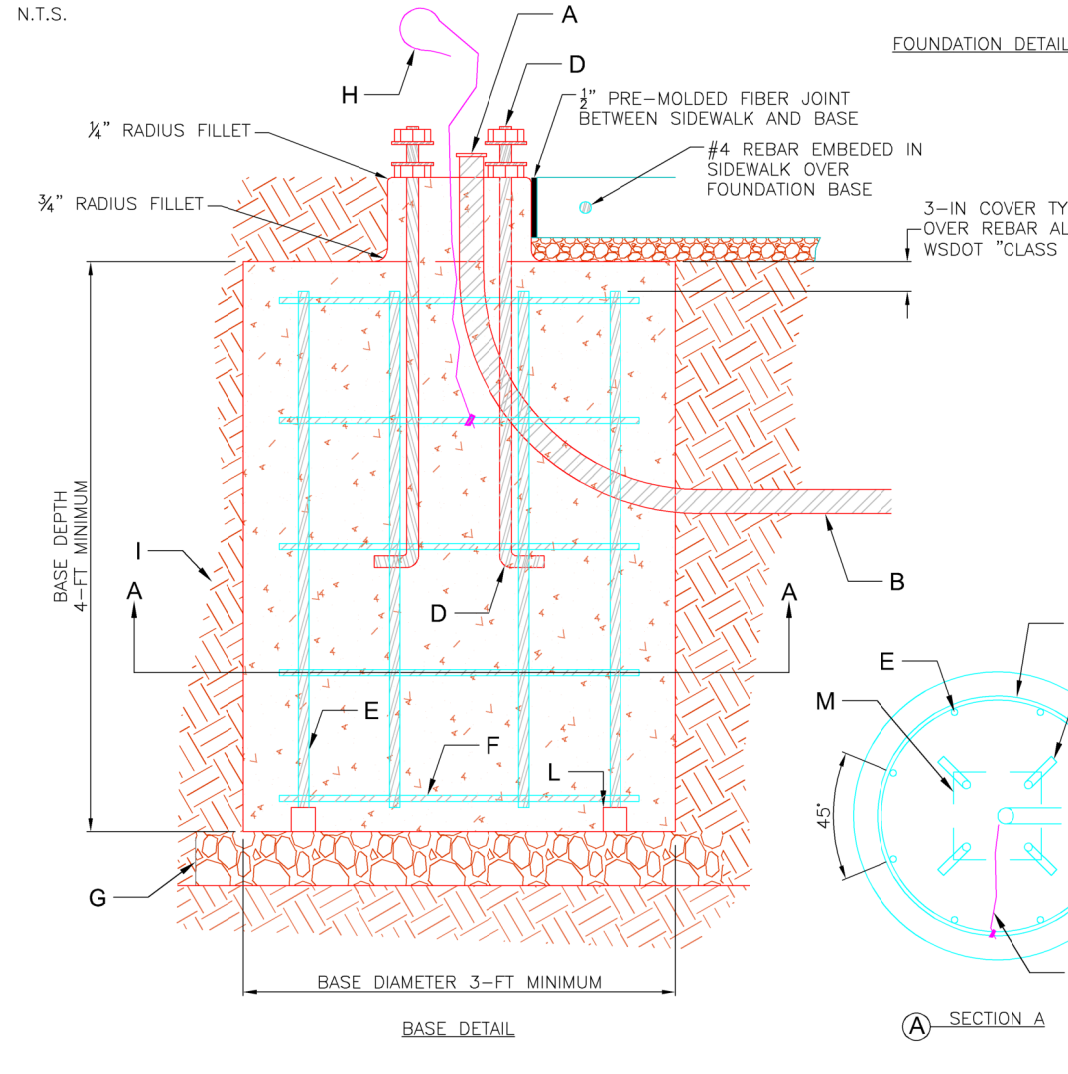
PHOTO CELL RATED FOR LED,
OR SHORTING CAP,
AS SPECIFIED BY PLANS

LAMPS TO BE LED,
FIXTURE TO BE "COBRA HEAD"



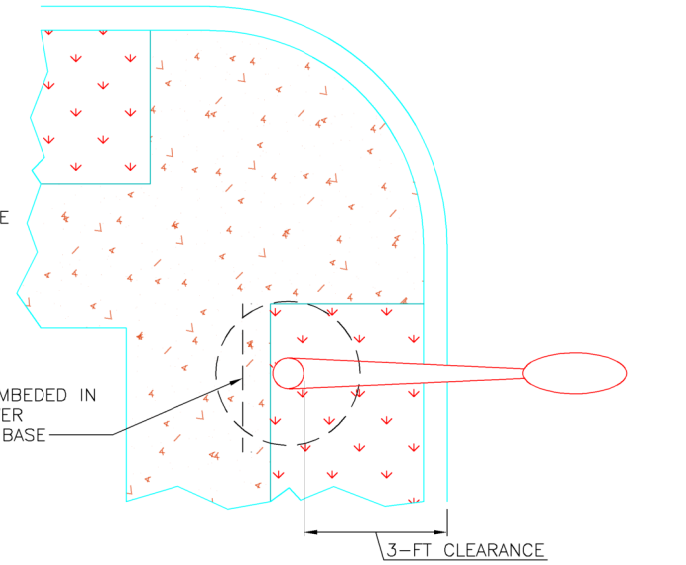
N.T.S.

N.T.S.

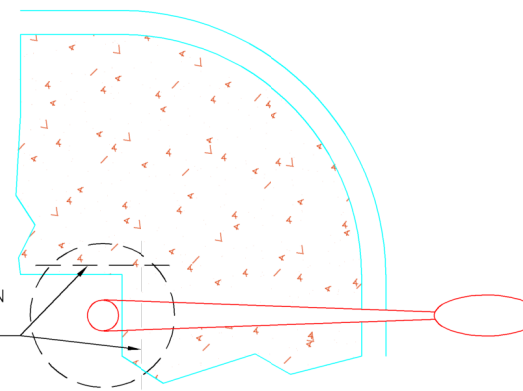


FOUNDATION DETAIL:

FOR INSTALLATION IN PLANTER STRIP



FOR INSTALLATION BEHIND SIDEWALK



SECTION A

NOTE:
FOUNDATION SHALL BE CONSTRUCTED USING METHOD 1 OR METHOD 2
ACCORDING TO WSDOT STANDARD PLAN J-28.30 SHEET 2

FOUNDATION

- A EXTEND 1 1/4" CONDUIT 2-IN MAX. ABOVE BASE WITH END BELL OR BUSHING AND OTHER END 2-FT-6-IN BELOW FINISH GRADE EXTENDED TO HAND HOLE. PROVIDE ADDITIONAL CONDUIT FOR COMMUNICATION OR SIGNAL CABLE WHERE SHOWN ON APPROVED DRAWINGS OR IDENTIFIED IN CONTRACT.
- B 1 1/4" DIAM. SCHEDULE 80 PVC CONDUIT EMBEDDED IN BASE EXTENDED TO HAND HOLE.
- C USE 1/2" PREMOLDED JOINT FILLER TO PREVENT BOND BETWEEN SIDEWALK AND BASE, AS SHOWN IN BASE DETAIL.
- D (4) ANCHOR "J" BOLTS HOT DIPPED GALVANIZED (PER ASTM A-307) 1-IN DIAM X 3-FT-8-IN W/ 4-IN HOOK AT BOTTOM, 3-FT EMBEDDED IN BASE, AND 2 3/4-IN PROJECTING ABOVE GROUT PAD, W/ (2) HVY DUTY GALV. 1-IN N.C. HEX NUTS & (2) FLAT WASHERS EACH, BOLT PATTERN IS 11-IN DIAGONAL.
- E (8) #7 X 3-FT-6-IN @ 45 DEGREE INTERVALS FROM CENTER
- F (5) #4 X 2-FT-6-IN DIAM HOOPS @ 10 1/2-IN O.C. W/ 1-FT-9-IN LAPS
- G WHEN USING METHOD 2 WSDOT STANDARD PLAN J-28.30 SHEET 2: COMPACTED LEVELING COURSE 2-IN COMPACTED DEPTH EXTENDED 6-IN BEYOND BASE ON COMPACTED SUBGRADE 95% STANDARD PROCTOR MINIMUM 6-IN MINIMUM COMPACTED DEPTH BELOW BASE
- H ADD A GROUNDING CONDUCTOR CONNECTED TO FOUNDATION REBAR WITH NON-INSULATED #4 AWG STRANDED COPPER; PROVIDE 3-FT MIN. SLACK ABOVE BASE. ROUTE CONDUCTOR TO LUMINAIRE GROUNDING STUD. CLAMP CONDUCTOR TO STEEL REINFORCING BAR AT LEAST 12-IN BELOW TOP OF CONCRETE WITH LISTED CONNECTOR SUITABLE FOR USE EMBEDDED IN CONCRETE - THE FOUNDATION SHALL BE GROUNDED IN ACCORDANCE WITH THE REQUIREMENTS OF STANDARD SPECIFICATION 8-20.
- I COMPACTED BACKFILL AROUND BASE TO 95% STANDARD PROCTOR MINIMUM, USING 8-IN LIFT THICKNESS MAXIMUM.
- J STRIP ALL FORMS FROM AROUND BASE BEFORE BACKFILL. IF USING GALVANIZED CORRUGATED METAL PIPE IT SHALL REMAIN A MINIMUM OF 6" BELOW FINISHED GRADE AND DEEPER.
- K WIRING DETAILS PER WSDOT STANDARD PLAN J-28.70 AND STANDARD SPECIFICATION 8-20.
- L PRE-CAST CONCRETE BLOCK SPACERS ATTACHED TO REBAR (3 MIN) TO PROVIDE 3-IN CLEAR FROM VERTICAL BARS TO SOIL
- M MONOLITHIC 12" SQUARE
- N OUTER DIAMETER CONCRETE BASE

LED Streetlight Luminaire Ordering Information			
Manufacturer	Product/Series	Distribution Type	Ordering Information
Acuity American Electric Lighting (use 3K for 3K, 4K for 4K)	Autobahn ATBO	II	ATBO-10BLEDE15-MVOLT-R2-3K-BL-P7-AO-SH
		III	ATBO-20BLEDE15-MVOLT-R3-3K-BL-P7-AO-SH
		IV	ATBO-10BLEDE15-MVOLT-R4-3K-BL-P7-AO-SH
Eaton Streetworks (use 7030 for 3K, 7040 for 4K)	Navion	II	NVN-AF-01-D-V-T2-10K-7030-1200-4N7-IP66-AP-K-QA/RA1013
		III	NVN-AF-02-D-V-T3-10K-7030-1A-4N7-IP66-AP-K-QA/RA1013
		IV	NVN-AF-01-D-V-T4-10K-7030-1200-4N7-IP66-AP-K-QA/RA1013
Philips Lumec (use 3K for 3K, 4K for 4K)	Roadfocus Medium	II	RFM-55W32LED3K-G2-R2M-UNV-DMG-FAWS-RCD7-PH9-GY3
		III	RFM-108W48LED3K-G2-R3M-UNV-DMG-FAWS-RCD7-PH9-GY3
		IV	RFM-55W32LED3K-G2-4-UNV-DMG-FAWS-RCD7-PH9-GY3
Leotek (use WW for 3K, NW for 4K)	Green Cobra Jr.	II (Collector)	GCIJ2-20H-MV-WW-2R-GY-900-FFA-PCR7-WL-RWG-SC
	Green Cobra Jr.	II (Local Roads)	GCIJ0-15H-MV-WW-2R-GY-700-FFA-PCR7-WL-RWG-SC
	Green Cobra M.	III	GCM2-30H-MV-WW-3R-GY-1A-FFA-PCR7-WL-RWG-SC
	Green Cobra Jr.	IV	GCIJ0-15H-MV-WW-4-GY-700-FFA-PCR7-WL-RWG-SC

Notes:
 3000K in color for all roads (except SR285 corridor)
 4000k in color for SR285 corridor
 Only one brand/type shall be used for entire project.
 Type 2 Distribution for collectors & local roads
 Type 3 Distribution for arterials
 Type 4 Distribution for cul-de-sacs, mast arm to extend luminaire beyond curb by 5 FT min., align with center of radius, install cut-off screen for back lighting
 New developments shall meet minimum illuminance values as set by AASHTO design standards in the "Roadway Lighting Design Guide", 2005

POLE AND BRACKET CABLE FOR LUMINAIRE WIRING #10 AWG AND # 10 'USE' GROUND WIRE
 REDUCE WASHER W/ SE CONNECTOR FOR SECURING POLE AND BRACKET AT LUMINAIRE
 FUSED QUICK DISCONNECTS AT TOP OF BASE ACCESSED VIA HANDHOLE IN POLE.
 SEE WSDOT STANDARD PLAN J-28.70 FOR STEEL LIGHT STANDARD WIRING DETAILS

STANDARD DETAIL
LUMINAIRE
BASE, LIGHT, & POLE



SCALE: AS SHOWN	DATE DRAWN	DESIGNED	CHECKED	DATE APPROVED	APPROVED BY	STANDARD SPECIFICATIONS
	3/23/2015	JBV	DMN	1/28/2018	JBV	2-09 STRUCTURE EXCAVATION 6-02 CONCRETE STRUCTURES 8-20 ILLUMINATION, TRAFFIC SIGNAL SYS. 9-29 ILLUMINATION, SIGNAL, ELECTRICAL
DETAIL NO. R-800						
PAGE 1 OF 1						