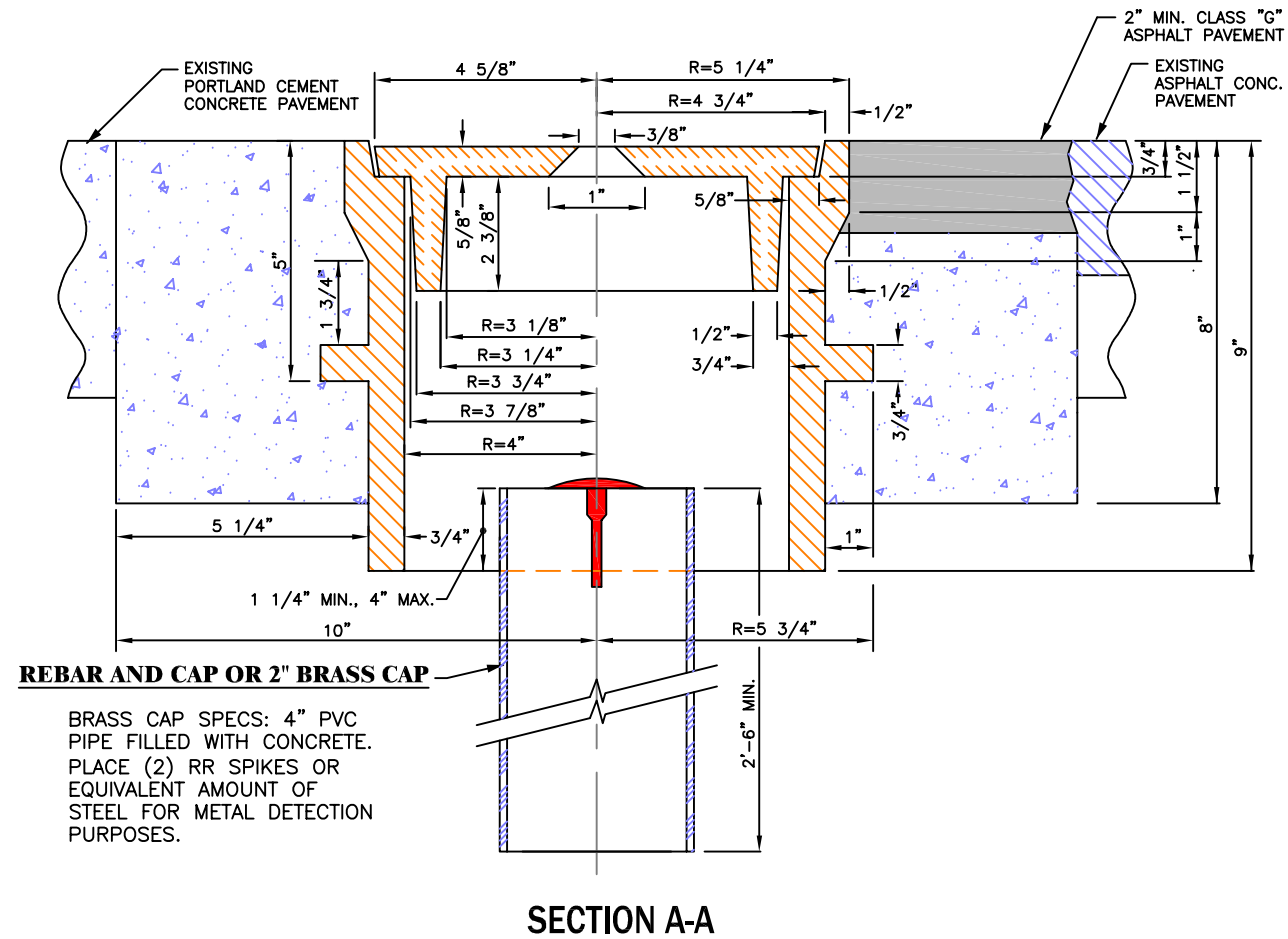


**NOTES:**

- 1) WHEN PLACING MONUMENTS IN PAVED SURFACES, HEIGHT OF CASE OR COVER SHALL BE NO LESS THAN ZERO AND NO MORE THAN 1/8" BELOW FINISHED GRADE.
- 2) MEETS CITY OF WENATCHEE AND WASHINGTON STANDARD SPECIFICATIONS FOR MONUMENT CASE AND COVER. SUITABLE FOR HEAVY TRAFFIC LOADING. UNIT WEIGHT 39 lbs.
- 3) MONUMENTS SHALL BE PROTECTED FROM DAMAGE ACCORDING TO R.C.W. 58.24.040, AND R.C.W. 58.09.130. IF MONUMENTS ARE TO BE DISTURBED, THEN W.A.C. 332-120 APPLIES.



**NOTES CONTINUED:**

- 4) CASTINGS SHALL BE GRAY IRON ASTM A48, AASHTO M 105, CLASS 30.
- 5) COVER AND SEAT SHALL BE MACHINED FOR PERFECT CONTACT AROUND CIRCUMFERENCE AND FULL WIDTH OF BEARING SURFACE.
- 6) APPROXIMATE WEIGHTS, STANDARD.  
CASE 60 LBS  
COVER 19 LBS  
TOTAL 79 LBS
- 7) CONCRETE SHALL BE CLASS 3000.

**STANDARD DETAIL  
MONUMENT CASE**



SCALE: AS SHOWN	DATE DRAWN	CHECKED	DATE APPROVED	REVISIONS	
				DATE	INITIAL
	02/21/2006	SK		12/21/2020	CAW

DETAIL NO.

**R-710**

PAGE

**1 OF 1**