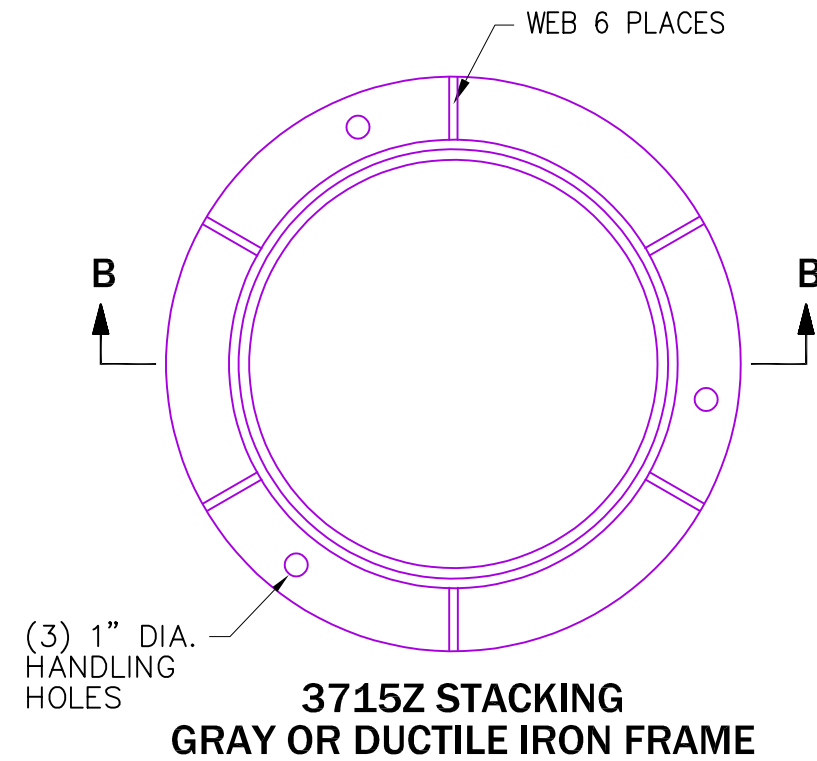
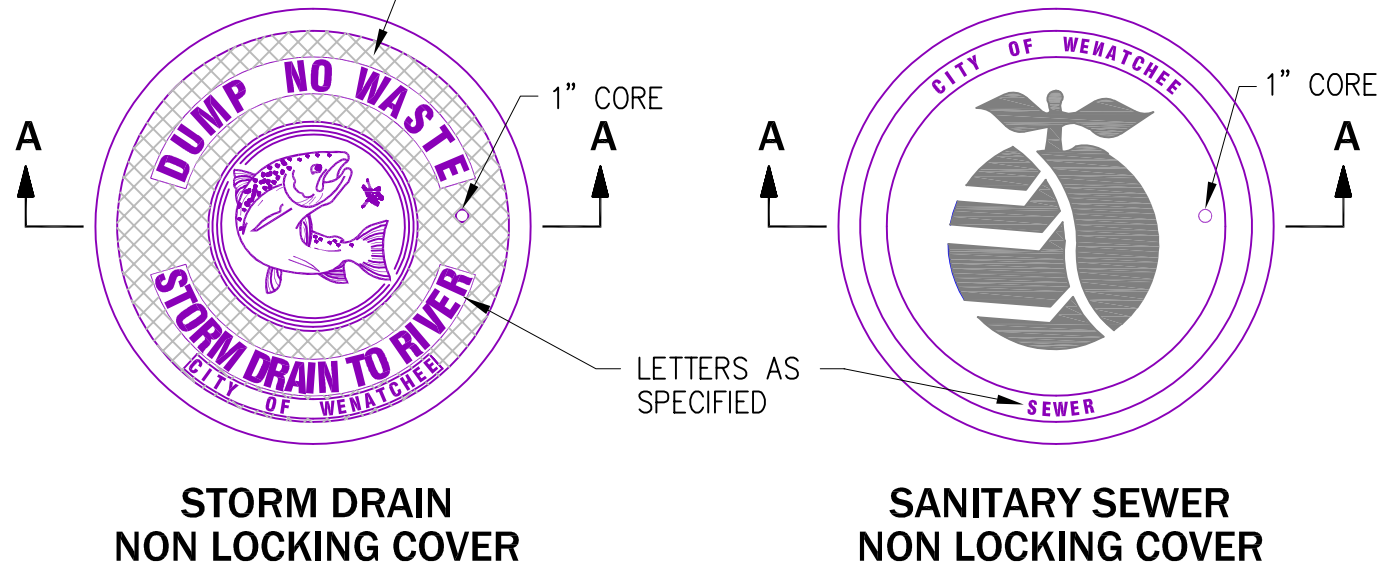


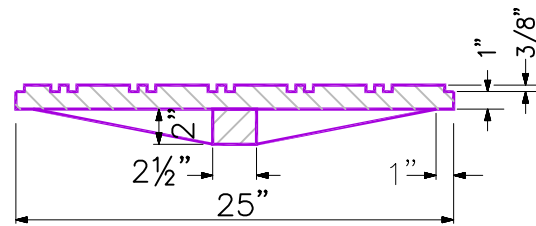
1/2" X 3" X 3/8" NON-SKID PATTERN TO BE CAST INTEGRAL ON TOP OF COVER.



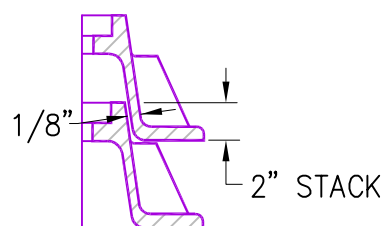
**NOTES:**

STANDARD SPECIFICATION SECTION 9-05.15(1) AND 9-06.14

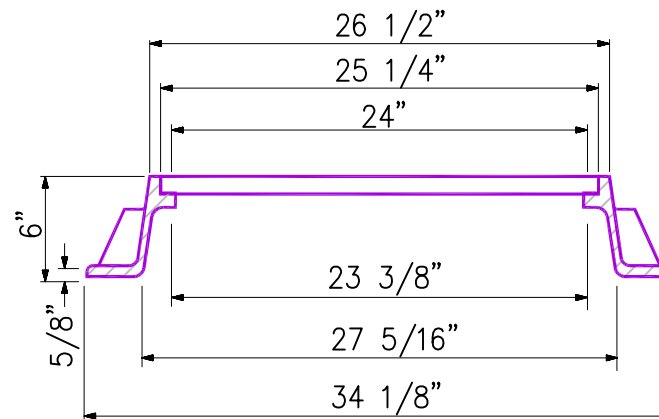
1. COVER SHALL BE AT MINIMUM 100 LBS
2. MINIMUM WEIGHT OF FRAME SHALL BE 134 LBS
3. PRODUCT SUPPLIES BY EAST JORDAN IRON WORKS, OR APPROVED EQUAL
4. CITY OF WENATCHEE LOGO REQUIRED
5. FRAME AND COVER SHALL BE H-20 LOADING RATED



**SECTION A-A - DUCTILE IRON NON LOCKING COVER  
MINIMUM WEIGHT 100 LBS.**



**STACKING DETAIL**



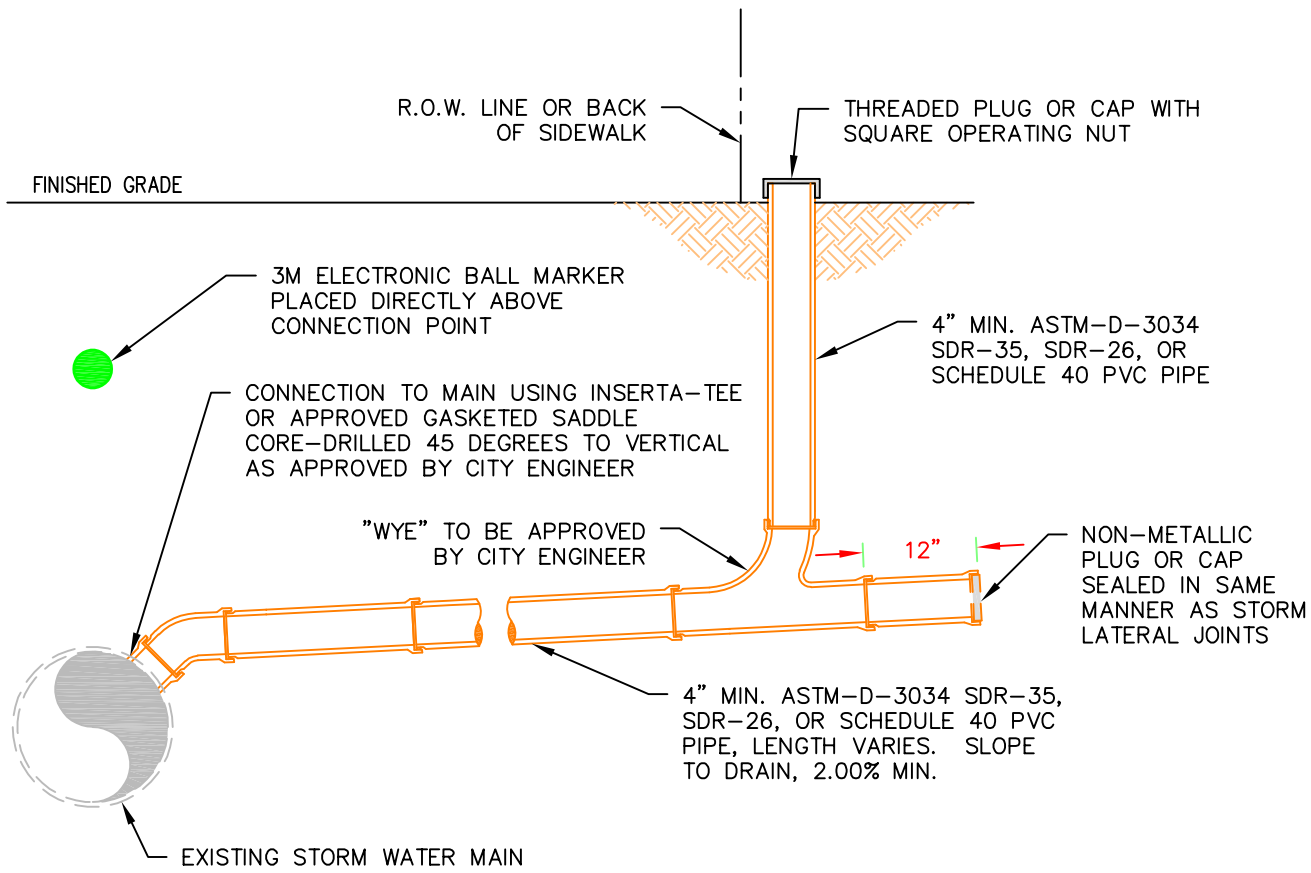
**SECTION B-B  
GRAY IRON OR DUCTILE IRON FRAME  
MINIMUM WEIGHT 135 LBS.**

**STANDARD DETAIL  
CIRCLE FRAME RING  
AND COVER DETAIL**

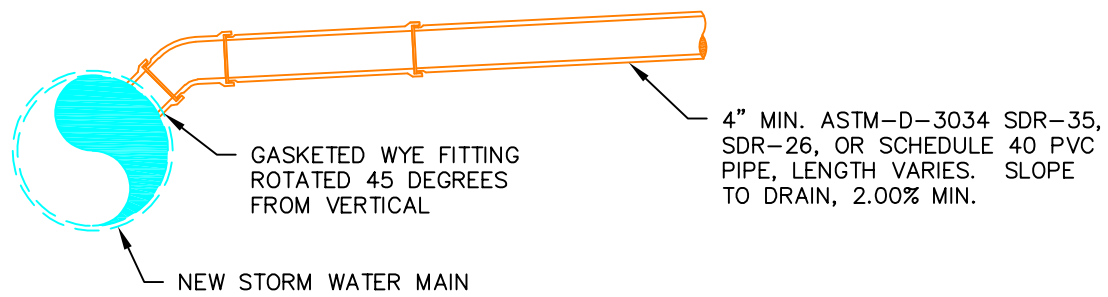


SCALE: AS SHOWN	DATE DRAWN	DESIGNED	DRAWN	CHECKED	DATE APPROVED	REVISIONS	
						DATE	INITIAL
	02/21/06		RLK	SK		10/03/18	DMN
						09/17/20	CAW

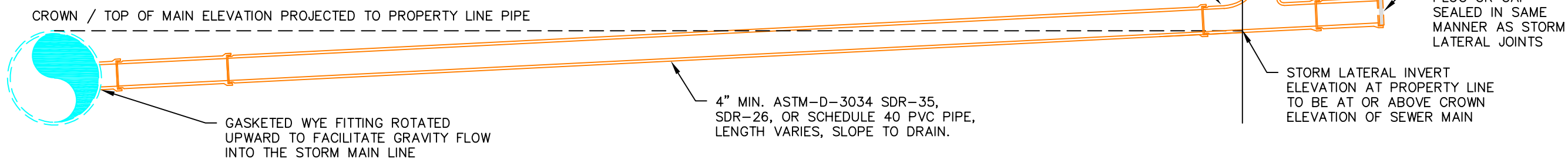
# CASE 1 NEW CONNECTION TO EXISTING STORM MAIN



# CASE 2 NEW CONNECTION TO NEW STORM MAIN



# CASE 3 NEW SHALLOW STORM CONNECTION



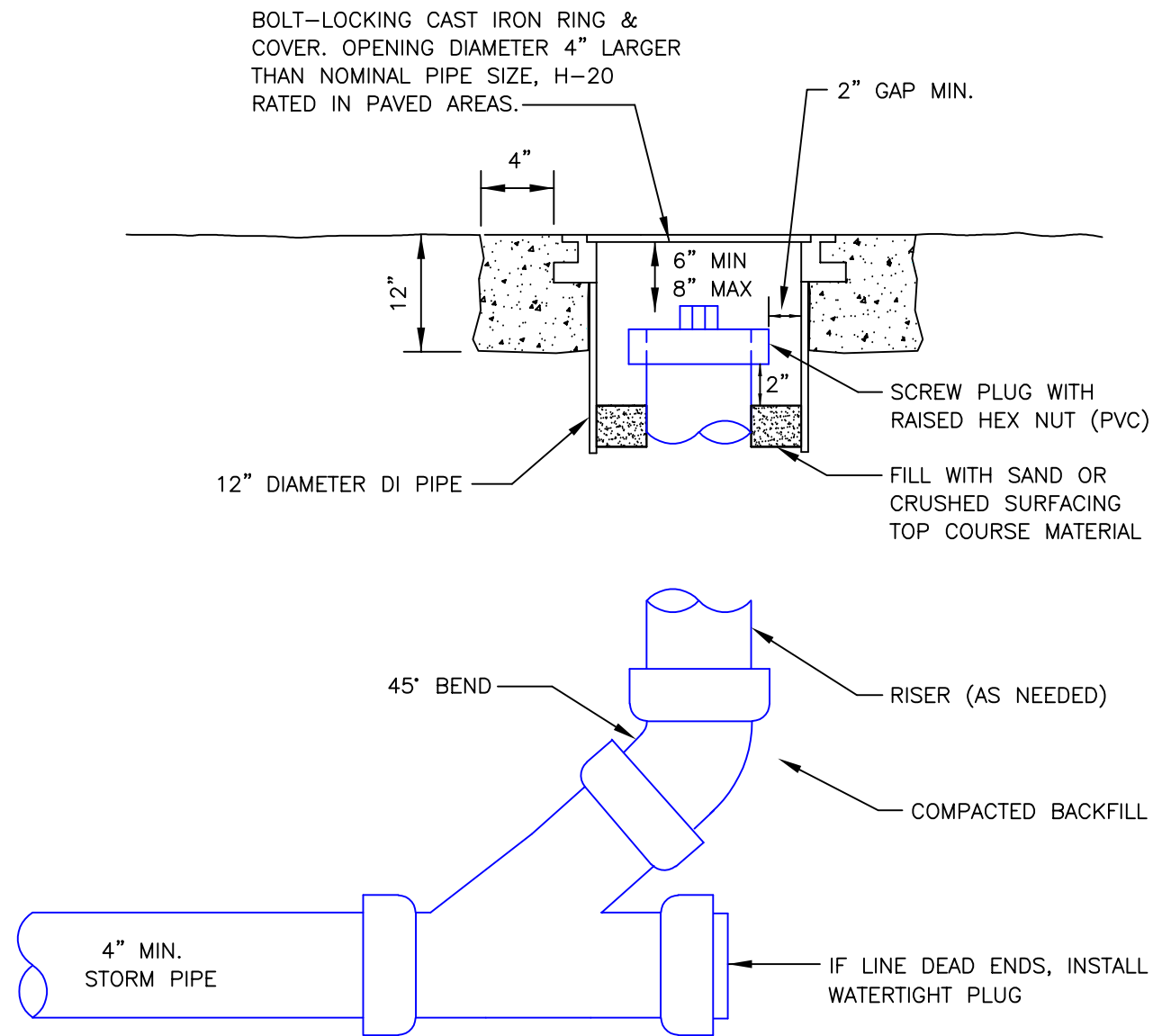
# GENERAL NOTES

1. ALL CONNECTIONS MUST BE APPROVED BY THE CITY OF WENATCHEE AND INSTALLED PER MANUFACTURERS RECOMMENDATIONS.
2. LATERAL CONNECTIONS TO THE MAIN LINE SHALL BE A MINIMUM OF 2 FEET APART.
3. LATERAL CONNECTIONS TO THE PUBLIC MAIN LINE SHALL BE DESIGNED TO FLOW BY GRAVITY THROUGH THE POINT OF CONNECTION. PRESSURE SYSTEMS SHALL DISCHARGE INTO GRAVITY FLOW NO LESS THAN 10 FEET UPSTREAM OF THE POINT OF CONNECTION BETWEEN THE 4 INCH LATERAL AND THE MAIN LINE.
4. THE STORM LATERAL, INCLUDING THE TAP, SADDLE, TEE, PIPE, AND CLEANOUT IS CONSIDERED "PRIVATE" UPSTREAM OF THE MAIN LINE POINT OF CONNECTION.
5. MINIMUM 4 INCH DIAMETER CLEANOUTS SHALL BE CONSTRUCTED ON ALL STORM LATERALS. THE VERTICAL RISER SHALL BE OF EQUAL SIZE AS THE LATERAL PIPE OR LARGER.
6. CLEANOUTS MAY BE LOCATED IN THE PLANTER STRIP AT THE BACK OF WALK, IF ONE EXISTS, AND SHALL BE VISIBLE AT FINISHED GRADE. CLEANOUTS LOCATED BELOW FINISHED GRADE SHALL HAVE ACCESSIBLE COVER.
7. 3M ELECTRONIC BALL MARKER TO BE PLACED 24 TO 36 INCHES BELOW FINISHED GRADE AND SHALL BE GREEN IN PIGMENT.
8. CASE 1: CONNECTIONS TO EXISTING STORM MAINS SHALL BE CUT USING A HOLE SAW. CONNECTIONS TO EXISTING MAIN LINES SHALL UTILIZE AN APPROVED TAPPING SADDLE OR TEE-WYE CONNECTION. LATERALS SHALL NOT PROTRUDE INTO THE MAIN LINE.
9. CASE 2: CONNECTIONS TO NEWLY CONSTRUCTED MAIN LINES SHALL UTILIZE A MANUFACTURED, GASKETED TEE-WYE INSTALLED IN-LINE WITH THE NEW STORM MAIN. CORE-DRILLING OF NEW SEWER MAIN LINES FOR STORM LATERALS SHALL NOT BE PERMITTED.
10. CASE 3: WHERE INSUFFICIENT GRADE EXISTS TO ALLOW STORM LATERALS TO BE INSTALLED IN ACCORDANCE WITH CASE 1 OR 2, FLATTER STORM LATERALS ARE PERMISSIBLE ON A CASE-BY-CASE BASIS AS DETERMINED BY THE CITY ENGINEER. CONNECTIONS SHALL UTILIZE A MANUFACTURED, GASKETED TEE-WYE FITTING INSERTED INTO THE MAIN LINE. CUTTING OR DRILLING BELOW SPRINGLINE IS PROHIBITED. THE INVERT ELEVATION OF THE PRIVATE STORM LATERAL AT THE PROPERTY LINE IN SUCH INSTANCES SHALL BE AT OR ABOVE THE ELEVATION OF THE CROWN OF THE PUBLIC STORM MAIN. PRIOR TO SUCH APPROVAL, A SITE-SPECIFIC CONSTRUCTION PLAN AND DETAIL MUST BE PROVIDED TO AND APPROVED BY THE CITY ENGINEER. ANY COSTS ASSOCIATED WITH BYPASS PUMPING WILL BE AT THE CONTRACTOR'S EXPENSE.

**STANDARD DETAIL**  
**4" TO 6" STORM LATERAL**  
**12 INCH AND SMALLER MAINS**



SCALE:	AS SHOWN	N.A.	DESIGNED	DMN	DRAWN	ROH	CHECKED	DMN	DATE DRAWN	3/23/2015	REVISIONS	DATE	INITIAL
			DMN		DMN		DMN		6/19/2015			6/19/2015	DMN
									2/9/2016			2/9/2016	NJH



NOTES

1. CAST IRON COVER SHALL READ EITHER "STORM" OR "DRAIN".
2. FOR USE IN PAVEMENT

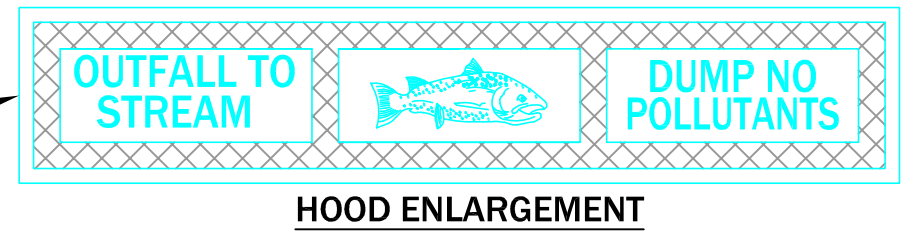
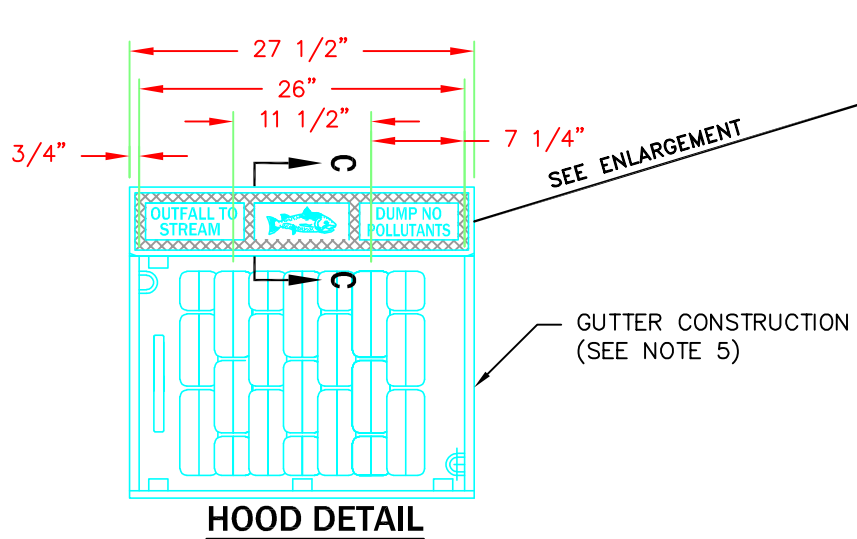
**STANDARD DETAIL  
STORM CLEANOUT FOR  
DRIVEWAY AREAS**



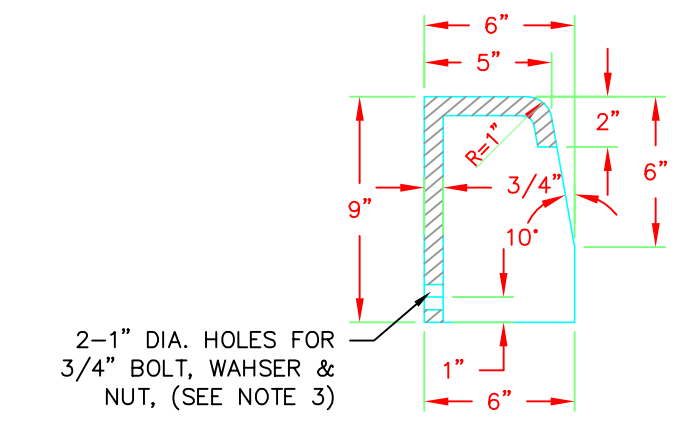
SCALE: AS SHOWN	DESIGNED	CHECKED	DATE APPROVED	STANDARD SPECIFICATIONS
	DRAWN CAW	CAW	DATE APPROVED	
DATE DRAWN 12/11/2020				
REVISIONS	DATE	INITIAL		

DETAIL NO.  
D-210

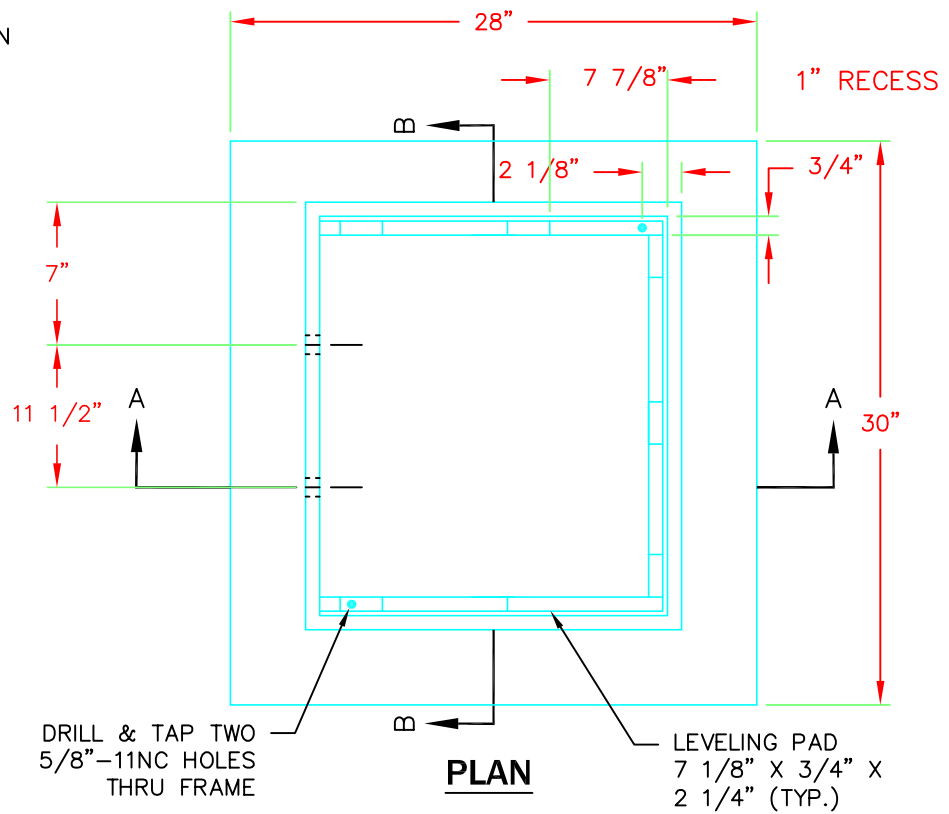
PAGE  
1 OF 1



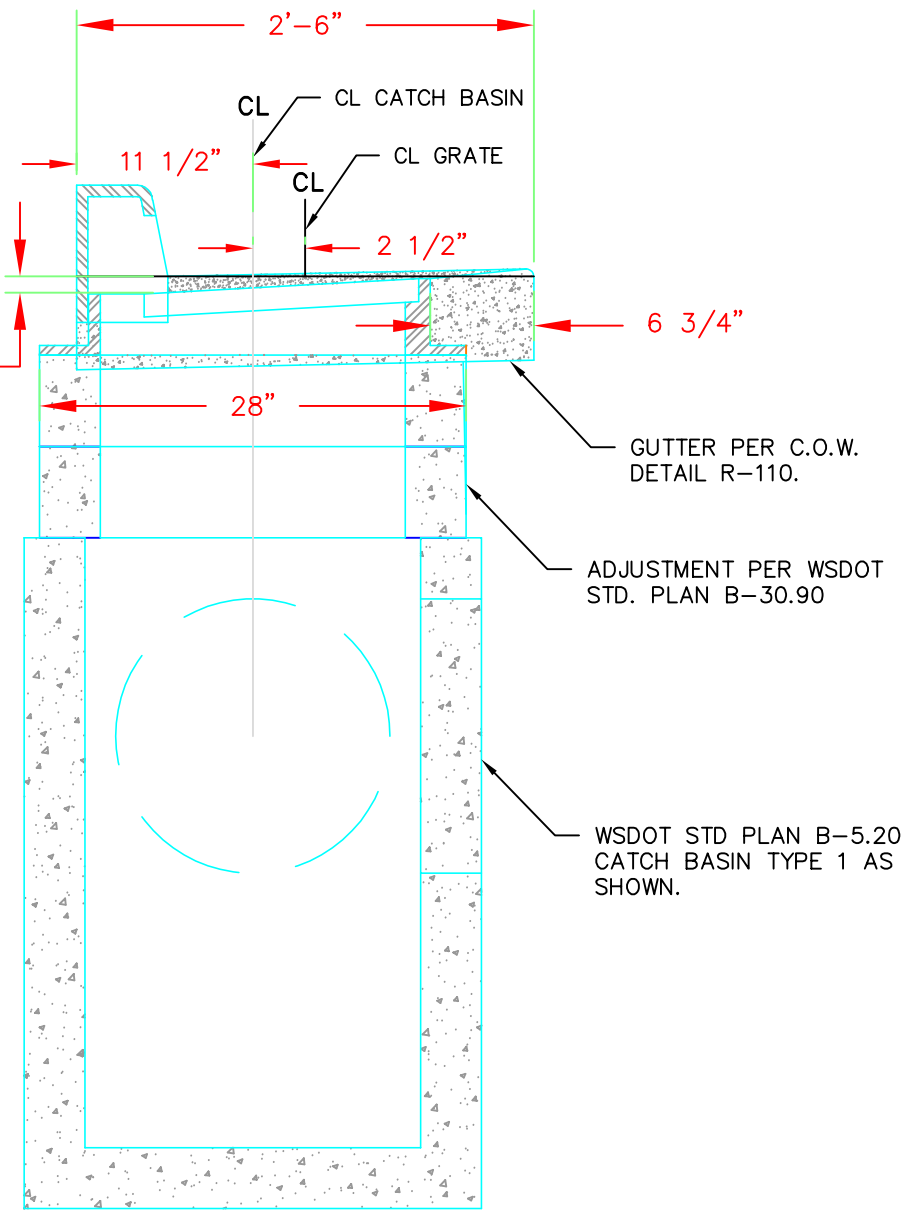
**HOOD ENLARGEMENT**



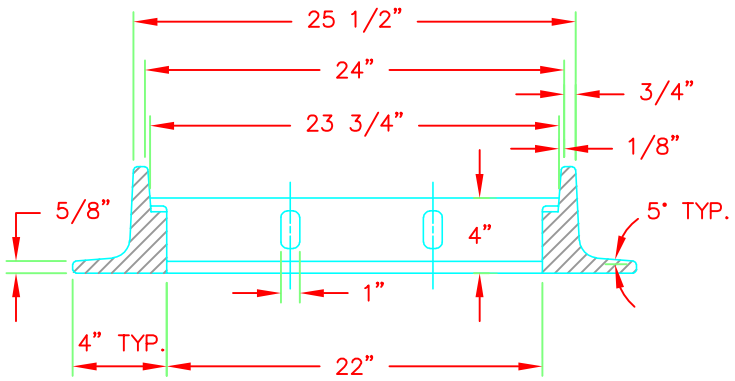
**SECTION C-C**



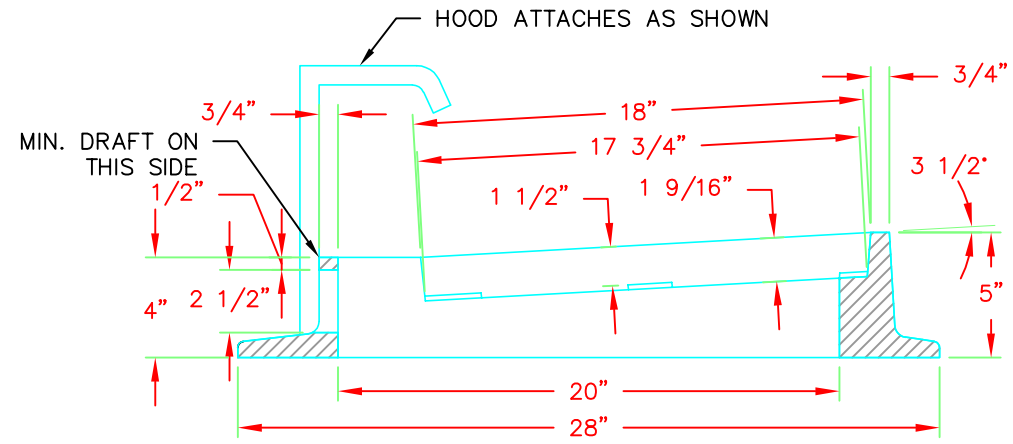
**PLAN**



**STANDARD DETAIL  
THROUGH CURB INLET**



**SECTION B-B**



**SECTION A-A**

**NOTES:**

1. MATERIAL IS CAST IRON ASTM A48 CLASS 30.
2. PATTERN ON TOP SURFACE OF HOOD SHALL BE 3/16" NON-SKID DIAMOND.
3. BOLT, WASHER, AND NUT SHALL BE GALV. OR CORROSION RESISTANT.
4. THROUGH CURB INLET EQUAL TO OLYMPIC SM52(05).
5. GUTTER SHALL BE CONSTRUCTED PER CITY OF WENATCHEE DETAIL R-110.

**NOTES:**

1. THIS INLET REQUIRES THE PRECAST CATCH BASIN UNIT TO BE ROTATED 90 DEGREES SO THAT THE NARROW SIDE IS PARALLEL TO THE CURB LINE. WHEN CALCULATING OFFSETS FROM CURB TO CL OF THE PRECAST CATCH BASIN, PLEASE NOTE THAT THE CL OF THE GRATE IS NOT THE CL OF THE PRECAST CATCH BASIN. SEE SECTION A
2. THE DIMENSIONS OF THE FRAME AND HOOD MAY VARY SLIGHTLY AMONG DIFFERENT MANUFACTURERS. THE FRAME MAY HAVE CAST FEATURES INTENDED TO SUPPORT A DEBRIS GUARD. HOOD UNITS MAY BE MOUNTED INSIDE OR OUTSIDE OF THE FRAME. THE HOOD MAY INCLUDE CASTING LUGS. THE TOP OF THE HOOD MAY BE CAST WITH A PATTERN.
3. ATTACH THE HOOD TO THE FRAME WITH TWO 3/4" x 2" HEX HEAD BOLTS, NUTS, AND OVERSIZE WASHERS. THE WASHERS SHALL HAVE DIAMETERS ADEQUATE TO ENSURE FULL BEARING ACROSS THE SLOTS.
4. ONLY DUCTILE IRON VANED GRATES SHALL BE USED. SEE WSDOT STANDARD PLANS RECTANGULAR GRATE B-30.30 AND BI-DIRECTIONAL GRATE B-30.40 FOR GRATE DETAILS.
5. THIS PLAN IS INTENDED TO SHOW THE INSTALLATION DETAILS OF A MANUFACTURED PRODUCT. THIS PLAN IS NOT INTENDED TO SHOW THE SPECIFIC DETAILS NECESSARY TO FABRICATE THE CASTINGS DEPICTED IN THIS DRAWING.

**THROUGH CURB INLET**

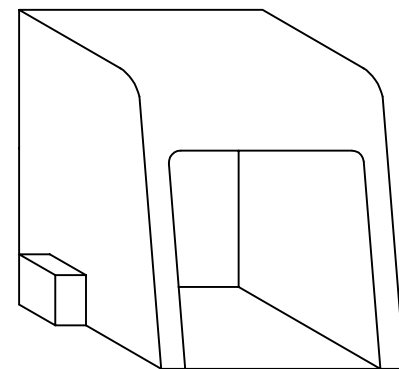
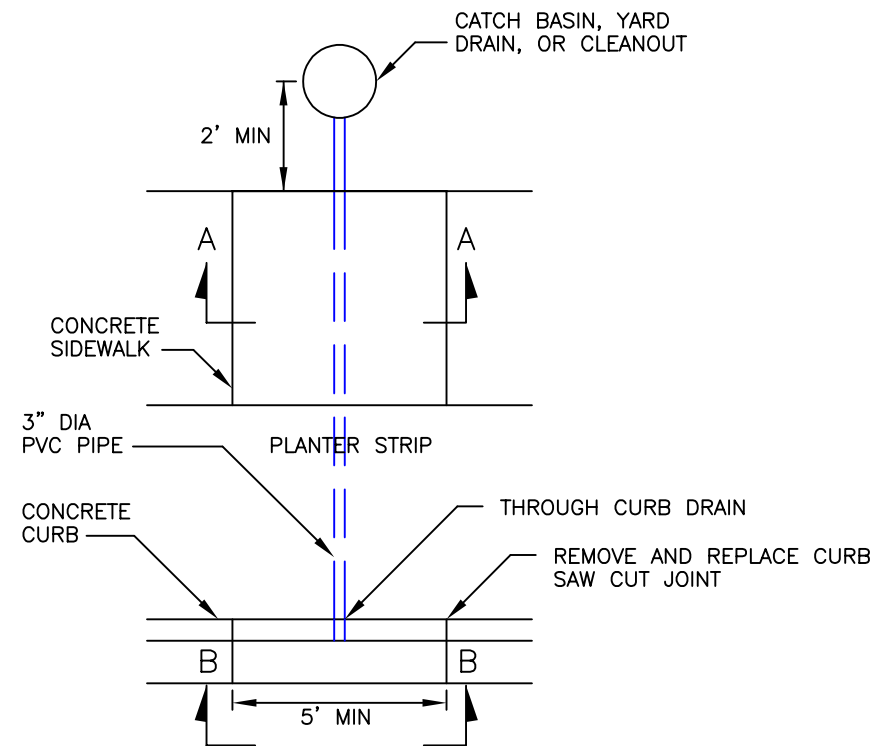


SCALE: AS SHOWN	DATE DRAWN	REVISIONS:			
		DATE	INITIAL	DATE	INITIAL
DESIGNED	2/21/2006	4/9/2015	RPB	4/13/2015	RPB
DRAWN				7/25/2016	DMN
CHECKED					
APPROVED BY					

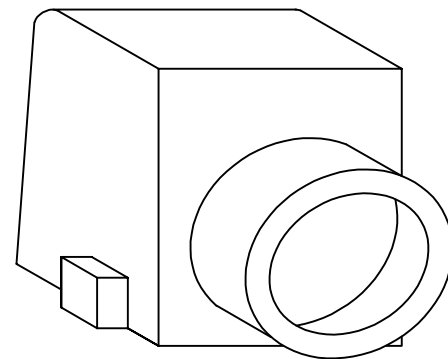
STANDARD SPECIFICATIONS  
7-05  
9-05.15(2)

DETAIL NO.  
**D-300**

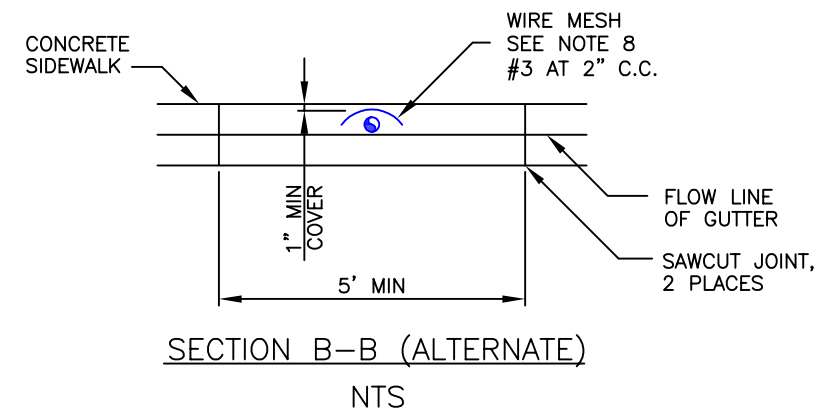
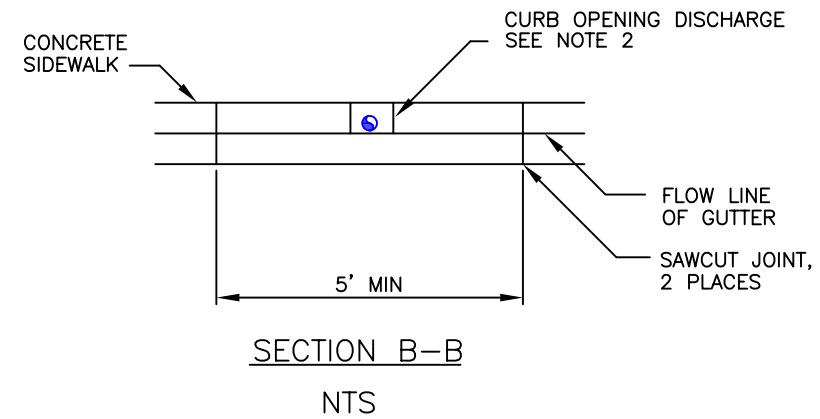
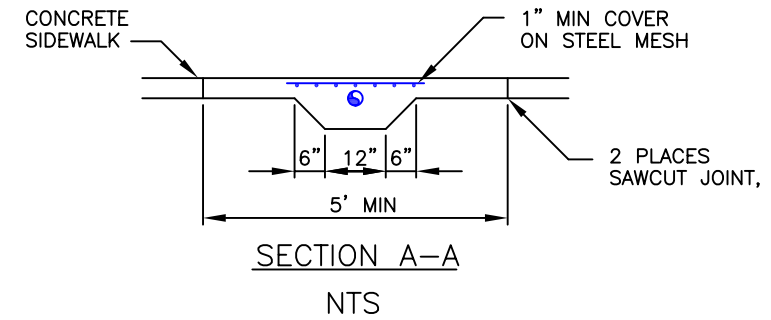
PAGE  
**1 OF 1**



CURB DRAIN FRONT



CURB DRAIN BACK



NOTES

1. PIPE SHALL BE 3" DIA PVC PLASTIC PIPE (SCH 40).
2. USE NEENAH FOUNDRY PRODUCT R-3262-3 OR EQUAL AS APPROVED BY CITY.
3. CEMENT CONCRETE SHALL BE CLASS B (3/4").
4. REINFORCING BAR SHALL BE #3 (3/8" DEFORMED BAR).
5. SIDEWALK AND CURBING MUST BE SAW-CUT AT A DUMMY JOINT OR REMOVED TO A FULL EXPANSION JOINT.
6. SIDEWALK THICKNESS OF 4" MINIMUM.
7. FULL DEPTH OF CURB AND GUTTER MUST BE REMOVED AND REPLACED.
8. WIRE MESH SHALL BE 3 X 3 10 GAUGE.
9. ALTERNATE TO BE USED ONLY WITH APPROVAL FROM CITY.
10. ONLY FOR USE IN AREAS WITHOUT EXISTING STORM SYSTEMS

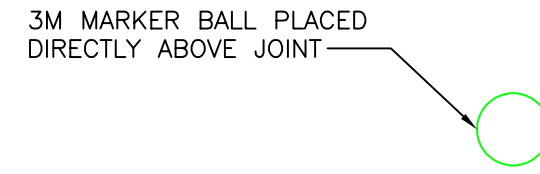
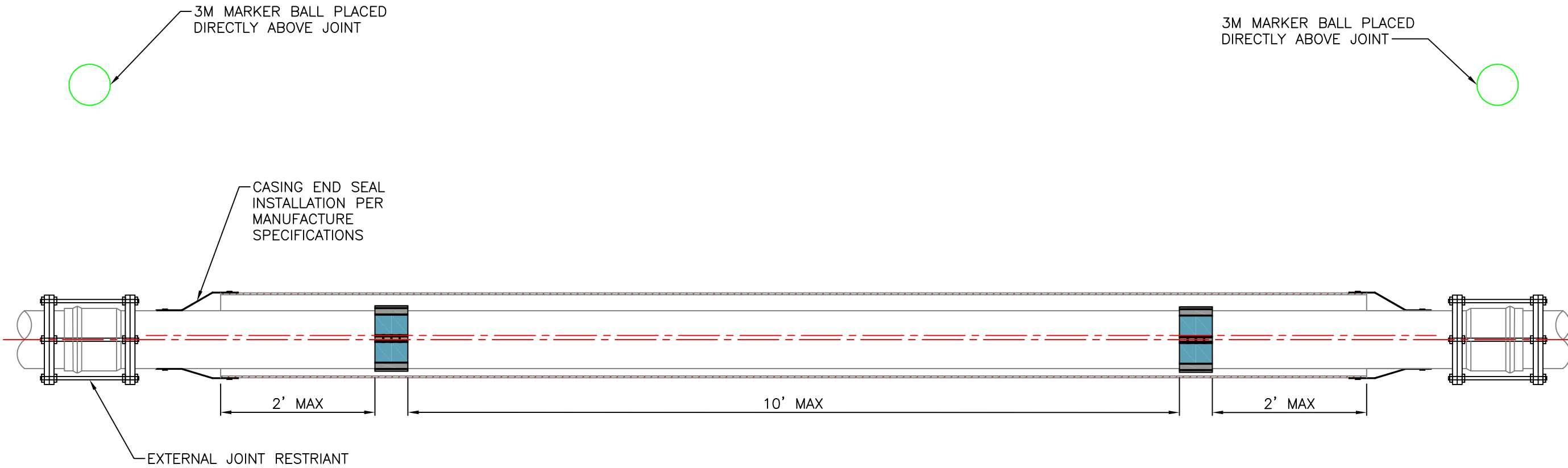
STANDARD DETAIL  
RESIDENTIAL SIDEWALK  
DRAIN



SCALE: AS SHOWN	DESIGNED	DRAWN CAW	APPROVED BY	STANDARD SPECIFICATIONS	REVISIONS	
					DATE	INITIAL
12/11/2020						

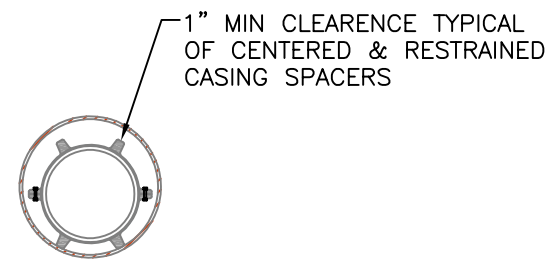
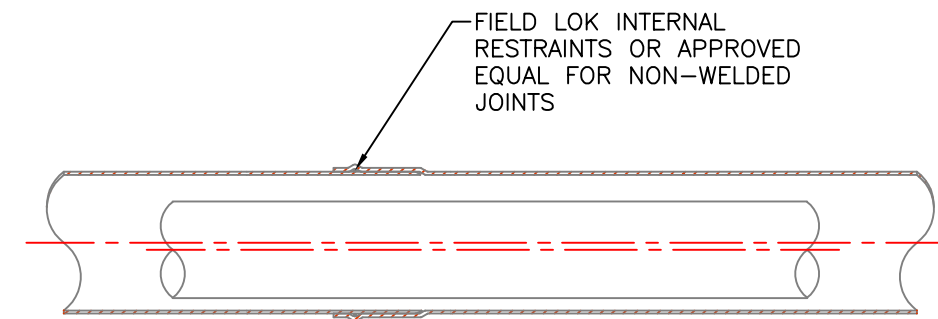
DETAIL NO.  
D-310

PAGE  
1 OF 1

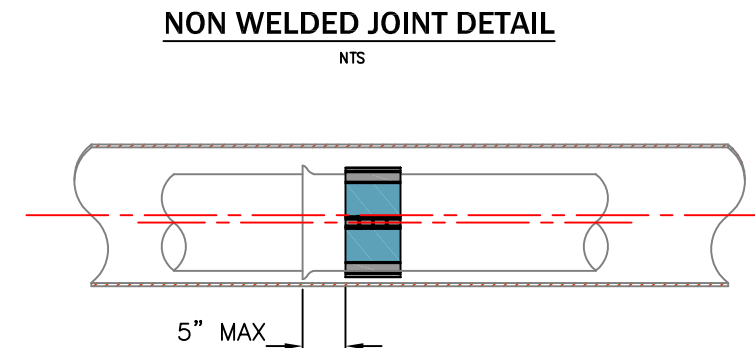


**NOTES:**

1. CARRIER PIPE SHALL BE USED AS REQUIRED WITHIN CITY RIGHT-OF-WAY.
2. ALL IRRIGATION PIPE LOCATED WITHIN CITY RIGHT-OF-WAY SHALL BE PVC C900 OR APPROVED EQUAL
3. ALL JOINTS THROUGHOUT CASING SHALL BE RESTRAINED WITH FIELD LOC INTERNAL RESTRAINTS OR APPROVED EQUAL.
4. RESTRAIN CARRIER PIPE ONE JOINT BEYOND END SEALS.
5. MANUFACTURED CASING SPACER INTERVAL PER MANUFACTURER'S SPECIFICATIONS BUT NOT MORE THAN 10- FEET. MINIMUM 3 SPACERS PER PIPE LENGTH.
6. CASING SHALL BE WELDED STEEL OR DUCTILE IRON FOR INSTALLATIONS LESS THAN 3- FEET BELOW ROAD GRADE. CPE MAY BE SUBSTITUTED FOR AREAS OUTSIDE OF PAVED ROADWAY.
7. CASING PIPE LENGTHS SHALL BE OF THE LONGEST AVAILABLE LENGTH OF PIPE FROM MANUFACTURER
8. NON- WELDED STEEL CASING SHALL BE EXTERNALLY RESTRAINED AT ALL JOINTS.
9. 3M MARKER BALL TO BE PLACED DIRECTLY ABOVE JOINT RESTRAINT AT END OF PIPE.
10. DETECTABLE MARKER TAPE TO BE INSTALLED 12- INCHES TO 14- INCHES ABOVE PIPE CASING. COLOR SHOULD BE ACCORDING TO APWA UNIFORM COLOR CODE FOR MARKING UNDERGROUND UTILITIES. DETECTABLE MARKING TAPE SHALL CONSIST OF INERT POLYETHYLENE PLASTIC THAT IS IMPERVIOUS TO ALL KNOWN ALKALIS, ACIDS, CHEMICAL REAGENTS, AND SOLVENTS LIKELY TO BE ENCOUNTERED IN THE SOIL, WITH A METALLIC FOIL CORE TO PROVIDE FOR THE MOST POSITIVE DETECTION AND PIPELINE LOCATION. DETECTABLE MARKING TAPE SHALL BE NO LESS THAN 2- INCHES WIDE, TYPE OF BURIED UTILITY SHOULD BE CLEARLY MARKED CONTINUOUSLY ALONG THE LENGTH OF THE RIBBON WITH MINIMUM 1- 1/2 INCH LETTERS IN THE FOLLOWING FORMAT: "CAUTION BURIED (UTILITY TYPE) LINE"



**CASING SPACERS DETAIL**  
NTS



**SPACER DISTANCE FROM BELL DETAIL**  
NTS

**STANDARD DETAIL  
CARRIER PIPE**



SCALE: AS SHOWN	DATE DRAWN	2/21/2006	DESIGNED	APPROVED BY
	DRAWN	JB	CHECKED	SK
DATE DRAWN	2/21/2006	DATE APPROVED	DATE APPROVED	DATE APPROVED
DESIGNED	JB	CHECKED	SK	DATE APPROVED
APPROVED BY		DATE APPROVED		
STANDARD SPECIFICATIONS				