

CONFLUENCE PARKWAY

April 2019 Outreach Summary

Overview

A well-publicized open house event was hosted by the City of Wenatchee on April 10th 2019. The purpose and goal of this meeting was to:

- Build upon previous outreach and continue the ongoing conversation about North Wenatchee area transportation solutions.
- Inform the community about the upcoming NEPA process and engage the community in discussion about the NEPA process and how it works.
- Identify specific areas of analysis ahead of the NEPA process and seek out previously unidentified stakeholders that should be included in future coordination.

The community presentation and public open house included a power point presentation, informational display boards, comment cards, and stakeholders and staff members were available to help answer questions. The project also engaged community members using a project website platform, which contained the same information and feedback opportunities as the community meeting.

The April 10th event was a continuation of the extensive outreach completed as part of the North Wenatchee Avenue Preliminary Engineering project just a few months earlier in November of 2018. Notification for this event included over 49,655 postcard mailers covering the whole Wenatchee Valley region. In person events were attended by nearly 150 community members, and the online open house site boasted over 2,500 sessions, with 766 completed surveys in both English and Spanish.

Email lists and contact information generated from the November outreach was used to specifically invite interested parties identified in November to continue the conversation at the April 10th event.

Feedback from the public has been overwhelmingly supportive of regional stakeholder's efforts to coordinate extensive improvements in the North Wenatchee area. There is a strong consensus that the need for these projects is real and congestion in the area is only getting worse.

Outreach materials

Various materials were developed as part of the outreach effort. The following outlines the notifications, tools, and physical materials that were used throughout the outreach process.

a. Notifications

- Flyer (Appendix B) in both English and Spanish was circulated to inform the public of the upcoming meeting and direct online traffic to the project website.
- Social Media (Appendix C) posts in both English and Spanish were used to advertise the public open house, project website, and share general project information on multiple platforms. Posts were shared on The City of Wenatchee's Facebook page, The Wenatchee World's Facebook page, and on the City's Twitter page.
- Radio & newspaper ads (Appendix D)
- An email listserv update (Appendix E) was sent out to the city's listserv to inform community members of upcoming public feedback opportunities.

- An email listserv update (Appendix F) was sent out to the listserv obtained through public engagement in the SR 285/ N Wenatchee Avenue Preliminary Engineering project.

b. Tools

An online project website is currently hosted on the City of Wenatchee's website (Appendix G) was live beginning on March 30, 2019. The website launched in advance of the community meeting with details of the upcoming meeting, including when and where it would be held, and what information would be shared. It included all meeting materials, and provided community members an opportunity to review the project information on their own time. The site provides a link for community members allowing them to provide feedback and comments.

c. Display Boards

Display boards (Appendix H) provided detailed information on the following:

- N Wenatchee Avenue
- Traffic Congestion
- Confluence Parkway
- McKittrick Underpass Look & Feel
- Confluence State Park
- Apple Capital Loop Trail
- Cultural Resources
- Fish & Wildlife
- Purpose & Needs of the Project
- NEPA Characterization Map & Process Overview

d. Handouts

- Comment cards with the open house flyer on one side, and a blank comment section on the back were produced and distributed to for community members to take home, or to provide their feedback on.

Community Meeting Summary

Meeting Details

Date: April 10, 2019

Time: 5:30 p.m. – 7:30 p.m.

Location: Confluence Technology Center (285 Technology Center Way, Wenatchee, WA 98801)

Attendees: Approximately 75 community members attended the meeting.

- At least two different media outlets were in attendance:
 - Wenatchee World
 - Fiber One News

Summary of Key Feedback Topics:

- Positive reaction to the goals of the project and the project need.
- Agreement in needing to improve traffic and safety
- Positive reactions to the need for a parallel roadway and connections to Olds Station.
- Strong suggestions to approach parks, wildlife and natural areas with caution and sensitivity
- Strong suggestions to minimize noise and be sensitive to visual appearance.

- General questions about the NEPA process, its importance, and how it works.
- General questions about vehicle capacity, access, and engineering related topics.
- General questions related to project schedule and how soon improvements can be made.

Appendix A. Event Photos



April 10, 2019 Open House Event



April 10, 2019 Open House Event



April 10, 2019 Open House Event

CONFLUENCE PARKWAY MEETING INVITATION

CONFLUENCE PARKWAY IS A SOLUTION TO TRAFFIC CONGESTION AND SAFETY CHALLENGES ON NORTH WENATCHEE AVENUE. CONFLUENCE PARKWAY PROVIDES ANOTHER ROUTE AND BRIDGE ACROSS THE WENATCHEE RIVER.

THE CITY IS EMBARKING UPON A VERY EXCITING OPPORTUNITY TO PERFORM A DETAILED ENVIRONMENTAL ANALYSIS TO DETERMINE HOW TO MITIGATE AND INVEST IN ENHANCING THE VERY IMPORTANT AREAS COMMONLY KNOWN AS CONFLUENCE PARK, THE CONFLUENCE OF THE WENATCHEE RIVER, THE HORAN NATURE TRAILS, APPLE CAPITAL LOOP TRAIL, OLDS STATION, THE NORTH MILLER AND WALLA WALLA AREA, AND THE RIVERFRONT PARK.

We need your help! Come join us and learn how to get involved in making our community better

APRIL 10, 2019
CTC, 285 TECHNOLOGY CENTER WAY
5:30 P.M.
cpnepa@wenatcheewa.gov
www.wenatcheewa.gov/ConfluenceParkway



PLEASE SPREAD THE WORD!! THANK YOU!!

INVITACIÓN A LA REUNION DE CONFLUENCE PARKWAY

CONFLUENCE PARKWAY ES UNA SOLUCIÓN A LA CONGESTIÓN DE TRÁFICO Y LOS DESAFÍOS DE SEGURIDAD EN NORTH WENATCHEE AVENUE. CONFLUENCE PARKWAY OFRECE OTRA RUTA Y OTRO PUENTE A TRAVÉS DEL RÍO WENATCHEE.

LA CIUDAD EMPRENDE UNA OPORTUNIDAD MUY EMOCIONANTE PARA REALIZAR UN ANÁLISIS AMBIENTAL DETALLADO PARA DETERMINAR CÓMO MITIGAR E INVERTIR EN LA MEJORA DE LAS ÁREAS MÁS IMPORTANTES COMÚNMENTE CONOCIDAS COMO PARQUE CONFLUENCE, LA CONFLUENCIA DEL RÍO WENATCHEE, SENDEROS NATURALES HORAN, APPLE CAPITAL LOOP TRAIL, OLDS STATION, ÁREA DEL NORTE DE MILLER Y WALLA WALLA, Y EL RIVERFRONT PARK.


¡Necesitamos Su ayuda! Únase a nosotros y aprenda cómo involucrarse en hacer que nuestra comunidad mejore

ABRIL 10, 2019
CTC, 285 TECHNOLOGY CENTER WAY
5:30 P.M.
cpnepa@wenatcheewa.gov
www.wenatcheewa.gov/ConfluenceParkway



POR FAVOR DIFUNDA ESTE MENSAJE ¡¡Gracias!!

Appendix C. Social Media Posts



City of Wenatchee Government
@CityofWenatchee

- Home
- About
- Photos
- Reviews
- Welcome
- Videos
- Posts
- Events
- Community
- Info and Ads

Create a Page

Like Follow Share ...

City of Wenatchee Government
April 8 at 9:14 AM · 🌐

Join us on April 10, 2019 at 5:30 PM at the Confluence Technology Center (CTC) in Wenatchee. We will be discussing one of the biggest projects of our region!
 Únase a nosotros el 10 de abril de 2019 a las 5:30 PM en el Confluence Technology Center (CTC) en Wenatchee. ¡Estaremos tratando uno de los proyectos más grandes de nuestra región!

See Translation

CONFLUENCE PARKWAY MEETING INVITATION

CONFLUENCE PARKWAY IS A SOLUTION TO TRAFFIC AND SAFETY CHALLENGES ON NORTH WENATCHEE AVENUE. CONFLUENCE PARKWAY WILL BE A NEW BRIDGE AND BYPASS ACROSS THE WENATCHEE RIVER.

THE CITY IS EMBARKING UPON A VERY IMPORTANT PROJECT TO PERFORM A DETAILED ENVIRONMENTAL STUDY TO DETERMINE HOW TO MITIGATE IMPACTS IN THE VERY IMPORTANT AREAS COMING FROM CONFLUENCE PARK, THE CONFLUENCE OF TRILLIUM TRAIL, APPLES TRAIL, THE NORTH MILLER TRAIL, OLD STATION AREA, AND THE RIVERFRONT.

Join us on April 10, 2019 at 5:30 P.M. at the Confluence Technology Center (CTC) in Wenatchee. www.cityofwenatchee.gov/ConfluenceParkway

INVITACIÓN A LA REUNIÓN DE CONFLUENCE PARKWAY

CONFLUENCE PARKWAY ES UNA SOLUCIÓN A LOS DESAFÍOS DE SEGURIDAD Y TRÁFICO EN LA AVENIDA WENATCHEE. CONFLUENCE PARKWAY SERÁ UN PUENTE Y UN PASADIZO A TRAVÉS DEL RÍO WENATCHEE.

LA CIUDAD EMPRENDE UNA OPORTUNIDAD MUY IMPORTANTE PARA REALIZAR UN ANÁLISIS AMBIENTAL PARA DETERMINAR CÓMO MITIGAR EL IMPACTO EN LAS ÁREAS MÁS IMPORTANTES QUE VIENEN DE CONFLUENCE PARK, EL CONFLUENTE DE TRILLIUM TRAIL, SENDEROS NATURALES DE LA APPLES TRAIL, OLD STATION, ÁREA DE WALLA WALLA, Y EL RIVERFRONT.

¡Únase a nosotros y ayude a involucrarse en hacer que nuestra comunidad mejore!

Viéjase el 10 de abril de 2019 a las 5:30 P.M. en el Centro Tecnológico de Confluencia (CTC) en Wenatchee. www.cityofwenatchee.gov/ConfluenceParkway

SPREAD THE WORD!! THANK YOU FOR DIFFERENTIATING

City of Wenatchee Government
City
👍 3

Wenatchee World
April 12 at 9:24 AM · ⚙️

The city of Wenatchee held a public meeting Wednesday at the Confluence Technology Center to answer questions about a possible project to create a Confluence Parkway that will create a bypass to North Wenatchee Avenue and create another bridge across the Wenatchee River to relieve congestion.



WENATCHEEWORLD.COM

Confluence Parkway expected to relieve North Wenatchee traffic

👍 🗣️ 🐼 Amanda Ann Brixey and 143 others 40 Comments 27 Shares

Appendix D. Radio & Newspaper Advertisements

The project informational flyer (Appendix A) was released to multiple radio stations including KOHO, Cherry Creek Media, and LaBuena. Details from the flyer were released on the air and ran for multiple days preceding the Public Open House. This information was also circulated through the Wenatchee World for published advertisements that ran on April 3, and April 7.

Appendix E. Email List Update

The informational flyer was sent by the City to 1,379 recipients who subscribe to the City of Wenatchee's website.

CONFLUENCE PARKWAY MEETING INVITATION

CONFLUENCE PARKWAY IS A SOLUTION TO TRAFFIC
CONGESTION AND SAFETY CHALLENGES ON NORTH
WENATCHEE AVENUE. CONFLUENCE PARKWAY PROVIDES
ANOTHER ROUTE AND BRIDGE ACROSS THE WENATCHEE RIVER.

THE CITY IS EMBARKING UPON A VERY EXCITING
OPPORTUNITY TO PERFORM A DETAILED ENVIRONMENTAL
ANALYSIS TO DETERMINE HOW TO MITIGATE AND INVEST IN
ENHANCING THE VERY IMPORTANT AREAS COMMONLY KNOWN
AS CONFLUENCE PARK, THE CONFLUENCE OF THE WENATCHEE
RIVER, THE HORAN NATURE TRAILS, APPLE CAPITAL LOOP
TRAIL, OLDS STATION, THE NORTH MILLER AND WALLA
WALLA AREA, AND THE RIVERFRONT PARK.

We need your help! Come join us and learn
how to get involved in making our
community better

APRIL 10, 2019
CTC, 285 TECHNOLOGY CENTER WAY
5:30 P.M.
cpnepa@wenatcheewa.gov
www.wenatcheewa.gov/ConfluenceParkway



PLEASE SPREAD THE WORD!! THANK YOU!!

Appendix F. KPG Email List Update

The following email was sent to everyone who provided contact information as part of the North Wenatchee Avenue Preliminary Engineering outreach effort in November of 2018.

From: North Wenatchee Avenue
Sent: Wednesday, April 3, 2019 4:07 PM
Subject: City of Wenatchee - Confluence Parkway Public Meeting Announcement

Good afternoon,

The City of Wenatchee would like to invite you to attend an informational meeting about Confluence Parkway, a parallel route to North Wenatchee Avenue, that includes a new bridge across the Wenatchee River. Once constructed, Confluence Parkway will work closely with North Wenatchee Avenue to improve traffic congestion problems currently growing on North Wenatchee Avenue. The need for extra capacity was studied and identified in 2011. The city is currently embarking on environmental analysis to ensure that the community is enhanced with the development of the Confluence Parkway option to solving North Wenatchee transportation challenges. Additional project goals include improvement to the Apple Capital Loop Trail, Horan Natural Area, Confluence Park, and other important elements of our city.

La ciudad de Wenatchee le invita a asistir a una reunión informativa sobre Confluence Parkway, una ruta paralela a North Wenatchee Avenue, que incluye un nuevo puente a través del río Wenatchee. Una vez construida, Confluence Parkway trabajará en estrecha colaboración con North Wenatchee Avenue para mejorar los problemas de congestión de tráfico que están creciendo en North Wenatchee Avenue. La necesidad de capacidad adicional se estudió e identificó en 2011. La ciudad se está embarcando en el análisis ambiental para asegurar la mejora de la comunidad con el desarrollo de Confluence Parkway para resolver los desafíos de transporte de North Wenatchee. Entre los objetivos adicionales del proyecto se incluyen la mejora de Apple Capital Loop Trail, Senderos Naturales Horan, el Parque Confluence y otros elementos importantes de nuestra ciudad.

Thank you,

Josh Fedora, P.E.

KPG | SEATTLE • BELLEVUE • TACOMA • WENATCHEE

Interdisciplinary Design

On behalf of:



Steve King, P.E.

Home Maps Notifications Contact Us Translate

Get Involved Services **Government** Visitor Info How Do I...


- Mayor's Office
- City Council
- Wenatchee Transportation Benefit District
- Community and Economic Development
- Complete Streets
- Imagine South Wenatchee
- City Code
- Public Works
- ADA Information
- Human Resources
- Finance
- Police
- Wenatchee Police Department Community Survey
- Fire
- Legal
- Wenatchee News**
- Legal Public Notices
- Contact Us
- Interlocal Cooperative Purchasing Agreement
- Document Center
- City Projects

WENATCHEE NEWS

Font Size: Share & Bookmarks Facebook Print

Confluence Parkway in Wenatchee

Post Date: 03/20/2019 4:02 PM



These paintings are provided with great thanks to Jan Cook Mack. Jan provided an artistic representation of Confluence Parkway along the FBI tracks and the new Wenatchee River Bridge. [Click here](#) to view full renderings.

Description:

The City of Wenatchee is taking the next step to address traffic congestion and safety challenges on North Wenatchee Avenue. Confluence Parkway is the preferred option under consideration to address these considerations through providing another route and bridge across the Wenatchee River. In 2011, the Clifton Douglas Transportation Council along with its partners developed the North Wenatchee Transportation Master Plan with broad stakeholder and public input. As a result of this study and work with the public, a preferred solution was developed by providing a bypass to North Wenatchee Avenue as opposed to adding additional lanes on North Wenatchee Avenue or adding another Columbia River Bridge.


The primary reasons behind this approach include the following:

- Increased traffic capacity with an uninterrupted free flow bypass. Based on Traffic analysis, Confluence Parkway provides additional traffic capacity to the North Wenatchee Area from approx. 40,000 cars a day to approximately 60,000 cars per day.
- Confluence Parkway would provide direct connection to the US 97A - US 2 Interchange and Okanogan Bridge.
- As identified in the 2011 Master Plan, increasing the number of lanes on North Wenatchee Avenue has a potential negative impact on the North Wenatchee Avenue Business District and contributes to safety problems for traffic and pedestrians.
- Confluence Parkway would provide another access route for emergency services and evacuation.
- Confluence Parkway provides an opportunity to help us improve the Apple Capital Loop Trail and the Heman Natural Area to make our community better.

The City is embracing again a very exciting opportunity to perform a detailed environmental analysis to better understand potential project impacts and determine how to mitigate and assist in enhancing the very important areas commonly known as Confluence Park, the Confluence of the Wenatchee River, the Heman Nature Trail, the Apple Capital Loop Trail, Clifton Station, the North Hill and Vista Vista area, and the Shearson Park. The City has hired KFG Engineering and Ancher Environmental to assist in performing environmental analysis.

The City of Wenatchee, in cooperation with Federal Highway Administration and Washington State Department of Transportation, is seeking input on this very important environmental work for Confluence Parkway and would like all those interested to participate in helping make our community better!

<https://www.wenatchee.gov/government/transportation/confluence-parkway>



Confluence Parkway / North Wenatchee Avenue Bypass

Click here to subscribe to Confluence Parkway Notifications

[Please provide your feedback here](#)

Links and Documents:

- North Wenatchee Transportation Master Plan (2011)
- North Wenatchee Master Plan (2016)
- 2040 Regional Transportation Plan
- Apple Capital Loop Grant Application Documents: Infrastructure for Rebuilding America!
- North Wenatchee Avenue Project Website

Maps:

- Confluence Parkway Inspection
- Aerial Scroll

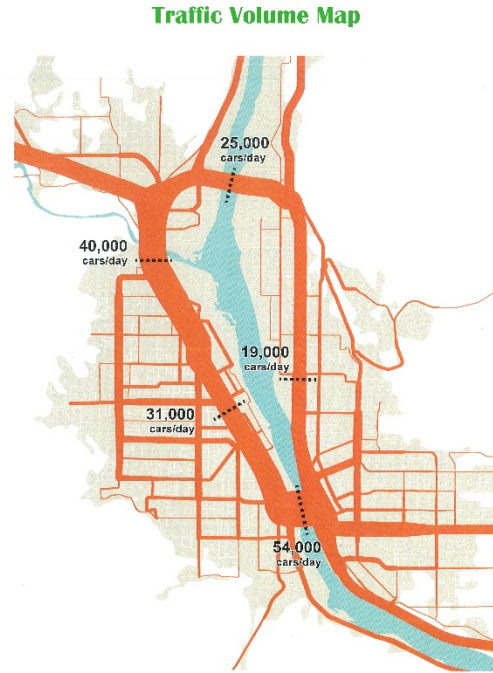
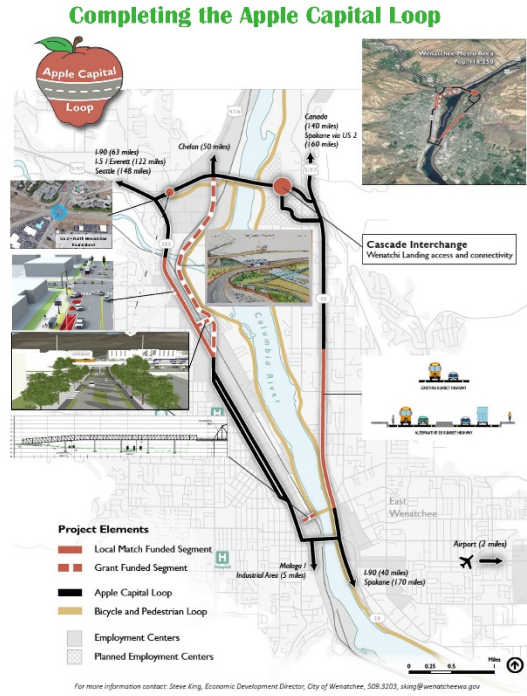
Events:

April 30, Confluence Parkway Informational Meeting
[Click here](#) for a copy of the presentation.

Contact us:
For questions, concerns or comments email us at caspp@wenatchee.gov

Revised 3/20/2019

Station 1: North Wenatchee Avenue



CONFLUENCE PARKWAY



Station 1: North Wenatchee Avenue

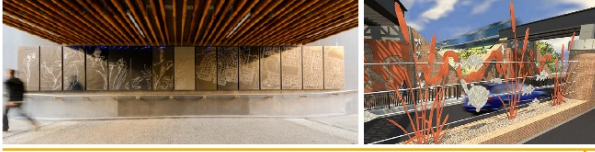


Traffic Congestion
 CONFLUENCE PARKWAY



Station 2: Confluence Parkway

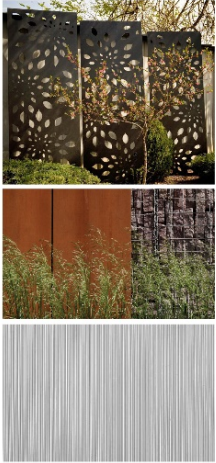
underpass 'artistic' treatment inspiration images



underpass lighting inspiration images



wall treatment inspiration images



pedestrian lighting inspiration image

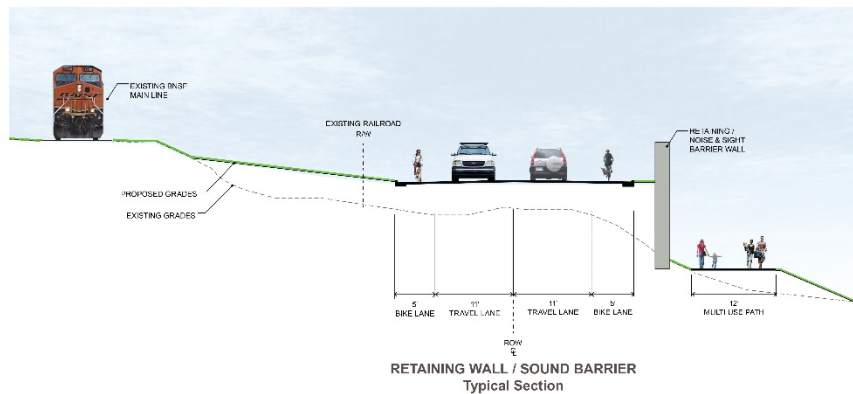
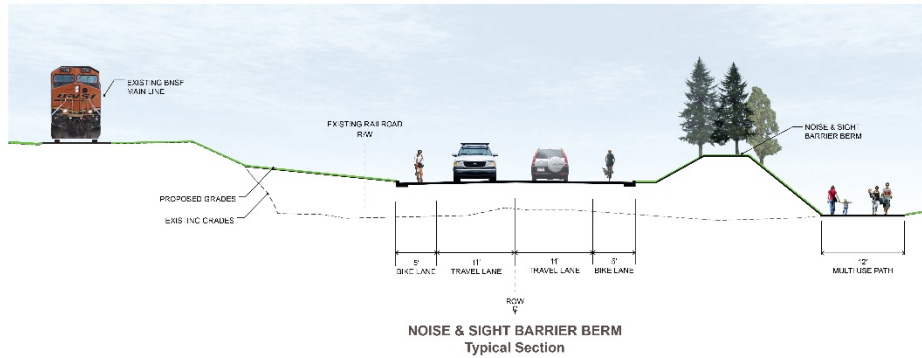


sidewalk treatment inspiration images

McKittrick Underpass Look & Feel CONFLUENCE PARKWAY



Station 2: Confluence Parkway



Trail Relocation Typical Sections - Parallel to BNSF Mainline CONFLUENCE PARKWAY

Station 2: Confluence Parkway



Confluence Bridge Artwork CONFLUENCE PARKWAY



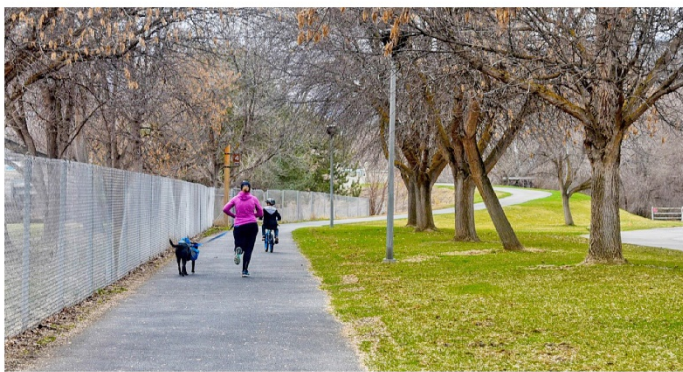
Station 3: Confluence State Park



CONFLUENCE PARKWAY



Station 4: Apple Capital Loop Trail



CONFLUENCE PARKWAY



Station 5: Cultural Resources/Fish & Wildlife



Fish & Wildlife
CONFLUENCE PARKWAY



Station 6: NEPA

Purpose & Needs of the Project

1. Provide multi-modal capacity to relieve congestion and meet travel demands.
2. Improve and sustain the viability of the Apple Capital Loop.
3. Improve safety for residents and roadway users.
4. Provide an alternate access point to serve as an evacuation route in the case of emergency.
5. Provide improved transit operations.
6. Support the viability of the business district and support economic development on the North Wenatchee Corridor.
7. Improve rail and roadway user interactions and safety.
8. Provide access to pedestrian, bicycle, recreational, and cultural facilities along the Wenatchee Waterfront.

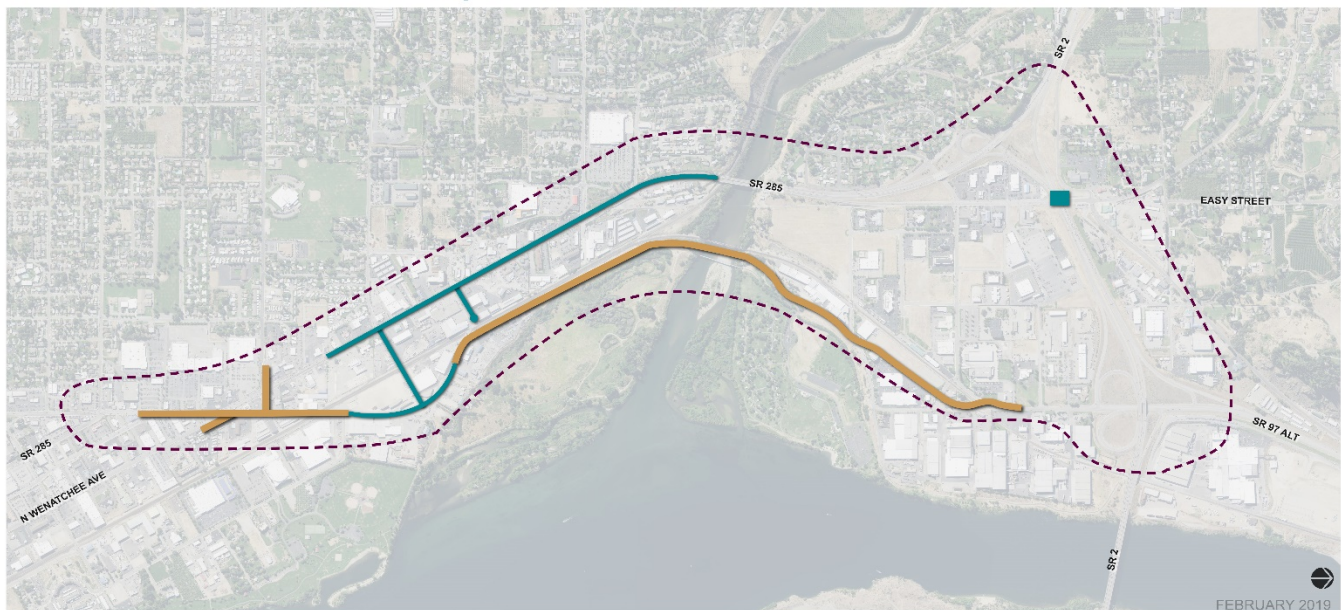
Purpose & Needs of the Project CONFLUENCE PARKWAY



Station 6: NEPA

NEPA Characterization Map

Prepared based on consultation with WSDOT & FHWA



- TRAFFIC ANALYSIS AREA FOR NEPA
- SEGMENT 1: SR 285/NORTH WENATCHEE AVENUE IMPROVEMENTS (NEPA CE DUE TO INDEPENDENT UTILITY)
- SEGMENT 2: CONFLUENCE PARKWAY/SR285 BYPASS (NEPA EA WITH POTENTIAL EIS)

NEPA Process Overview CONFLUENCE PARKWAY





North Central Washington
Audubon Society

The Horan Natural Area

Envisioning the Future

January 2019 v3.0



A Short History and Use

The Horan Natural Area provides valuable bird and wildlife habitat on 100 acres of the Wenatchee River delta as it enters the Columbia River. Situated within the City of Wenatchee, the Horan supports a wide range of recreational and educational uses providing a unique addition to the city's many parks. The North Central Washington Audubon Society (NCWAS) places high value on the Horan Natural Area and wants to see the area improved to provide better wildlife and bird habitat as well as enhanced recreational and educational opportunities.

Historically, the Horan area was home to P'squosa/Wenatchi/Wenatchapum Native Peoples. It was a well-known regional council grounds since time immemorial. It was a gathering place for bands and tribes throughout the Pacific Northwest where matters of vital importance were transacted. Days in council were spent addressing developments, forming alliances and strengthening the relational bonds of bands and tribes throughout the area. Oral traditions describe exciting horseraces, extensive trading and bartering bringing people and communities together.

In 1872 Sam Miller began operating a trading post at the site. In contemporary times, the Horan supported a pear orchard and a golf driving range. In 1987-1988 the Chelan PUD purchased much of the area from the Horan family to construct a manmade wetland as part of the licensing of Rock Island dam. The PUD developed a series of connected, steep-sided ponds along with a gravel trail system that extends throughout the area. Today, most of the area is owned by the Chelan PUD. The Washington State Parks and Recreation Commission manages the Horan area through an agreement with the Chelan PUD. Some of the area (Figure 1) is privately owned by three entities.

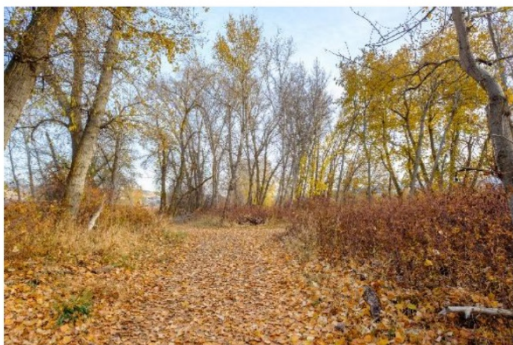
The existing license of Rock Island dam with the Federal Energy Regulatory Commission contains specific management direction for the Horan Natural Area. Examples of the specific direction are to manage the area for Wood Ducks and to implement a seasonal closure of the east side trail for protection of Bald Eagle nesting sites. The gravel trail system is maintained to provide easy foot access through the area. The complex of shrubs, black cottonwood and grasses/forbs provides a variety of habitats for birds, deer and other mammals.

The Horan has become a haven for runners, walkers, bird watchers and people who just want to get outdoors. The Horan is an internationally known bird “hotspot” and routinely has bird observations entered into the Cornell Labs eBird database. People travel from afar to visit the Horan and see the variety of seasonal birds that it offers.

In addition to land-based recreation, the sloughs along the east edge of the Horan provide a pleasant water-based trail system for canoes and kayaks. The water trails are used extensively by the Wenatchee Row and Paddle Club.

The Horan also provides needed continuity to upstream and downstream areas for animal migration and recreational opportunities. The Horan Natural Area is bounded by Walla Walla Point Park to the south of the Horan and Confluence State Park. Future land purchases upstream of the Horan will provide additional opportunities to enhance recreation and animal habitat in the vicinity.

Current Conditions



While the Horan currently provides a rich environment for people, birds and animals, several problems exist. Surface water is an essential element for sustainable wetlands, pond environments and riparian plant communities. Much of the surface water that historically flowed into and through the Horan has been diverted or channels have silted in creating sheet flow rather

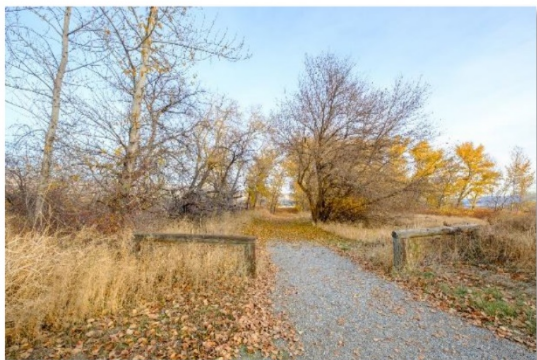
than channelized flow. Many of the ponds are disappearing and vegetation becomes established as they dry. Seasonal flooding forces closure of portions of the trail system. Maintenance of channels requires the cooperation of private landowners who sit upstream of the land owned by the Chelan PUD. Today, groundwater supplies the ponds and wetlands. As such, water elevations and continuity are influenced by natural seasonal runoff and regulated flows in the Columbia. Little is known about the relationship and timing of groundwater levels in the Horan area relative to fluctuating river levels. A dependable water supply is essential to the long-term sustainability of wetland, pond and riparian habitats.

Weeds are a pervasive problem in Chelan and Douglas counties and the Horan has not escaped the invasion. To provide long-term health for upland and riparian plant communities, the weeds in the Horan need to be controlled or eliminated. A detailed inventory of the existing plant communities and habitat mapping in the Horan is needed so that planning can begin to enhance native plants and control weeds.

The steep-sided ponds are disappearing. The original design of these man-made ponds focused on Wood Ducks and muskrats. In order to provide accessible habitat to a broader variety of waterfowl and shorebirds, the ponds need to be redesigned to have shallow banks and continuous water.

There is no known inventory of recreational use numbers or patterns in the Horan. It is common to encounter runners, walkers and general recreationists in the area. School and civic groups use the area on occasion. Parking is free at Walla Walla Point Park and restrooms are available in the Horan as well as the parks at either end of the area. Parking at Confluence State Park requires a Discovery Pass.

Although the area is easily accessible to the growing population of Wenatchee the value of the Horan is largely unknown and is under-used by local residents. The Horan offers north central Washington a wonderful opportunity for environmental education and increased recreation. Development of multicultural signage and education can play a vital role in expansion of the numbers of people using the area.



Looking to the Future

The NCWAS sees enormous opportunity for making the Horan Natural Area a world class urban wild park. We hope to assist in planning efforts that could influence future environmental and social vitality of the Horan. We are looking at near-term planning activities as a means to create long-term solutions for this valuable area.

The City of Wenatchee is investigating development of a North Wenatchee Avenue bypass. Initial plans put the new road in the area of the existing railroad tracks on the west side of the Horan. The Chelan PUD is beginning to plan the relicensing of the Rock Island dam. Relicensing offers opportunities to mitigate effects of the dam. Both the City and the PUD staff have expressed interest in improving the Horan area during their planning. We are greatly encouraged by the shared views of the values the Horan offers and a willingness to work cooperatively to create long-term sustainable conditions in the Horan.

The NCWAS wants to help design the future of the Horan. As a first step, our view of the Desired Future Condition of the Horan is described below.

Our view of the future Horan is that within 50 years the Horan Natural Area will be:

- A self-sustaining mix of native wetland, marsh, upland and riparian forest habitats that support aquatic and terrestrial species.
- A site that honors the local indigenous history of P'squosa/Wenatchi/Wenatchapum through a living cultural monument. This may include reintroducing plants such as wapato/arrowroot, which once grew in the area, creating a native plant garden as well as establishing designated gathering areas for traditional plants used for basketmaking and medicine
- Free of weeds
- A diverse mix of pond and riverine habitats
- Hydrologically connected to surface and subsurface water sources to support wetland and marsh vegetation
- An accessible area that provides opportunity for bilingual educational experience and onsite environmental education
- A center for regional environmental education
- Linked to downstream and upstream landscapes for bird, wildlife, recreation and education opportunities
- An area supporting a mix of pedestrian and water-based, non-motorized recreational experiences

Achieving these conditions will take time and a vision that is shared by local residents, property owners and agencies with ownership or management responsibilities. Building a

network of informed citizens and key players is essential to the success of envisioning and implementing actions that lead to desired results.

Key players in this effort include:

- The City of Wenatchee, the Chelan PUD, the Washington State Parks and Recreation Commission and private landowners in the area.
- The Confederated Tribes of the Colville Tribes and the Confederated Tribes and Bands of the Yakama Nation.
- Citizens of Wenatchee and East Wenatchee
- The NCWA proposal to improve conditions in the Horan was adopted by the Our Valley Our Future organization as a Lead Partner.

Potential organizations that could greatly assist in forming the vision and helping implement actions to achieve the desired conditions include:

- NCW Audubon Society
- The Chelan-Douglas Land Trust
- The Trust for Public Land
- Wenatchee Valley Museum and Cultural Center
- State and county management agencies
- Wenatchee Row and Paddle Club
- Wenatchee School District
- Wenatchee Outdoors Club
- Wenatchee Sportsman Association

A shared vision of conditions in the Horan Natural area needs to be long-term - a 50-100 year view. Actions to influence the future need to happen soon as the City and the PUD actively plan infrastructure and dam relicensing. Both of these planning efforts offer the opportunity to meaningfully improve the Horan so it can be the world class resource we envision. With citizen awareness and opportunity to provide input and assistance, planning for the Horan can be a win-win for all of us. It seems entirely possible. The Horan is highly valuable now and can be even more valuable in the future. This is a chance to do the right thing for the people and the environment.

App
Pac
Exec
Paci
Conf
Conf
Wen
Park
Wen
map
Seve
prac
unde
Conf
were
was
knap
and
esta
wild
plan
whe
focu

y
of
ate
se
as
s)
l
'ea



Figure 1. The Horan Natural Area. Chelan County GIS, ownership parcels. Private ownership in shaded