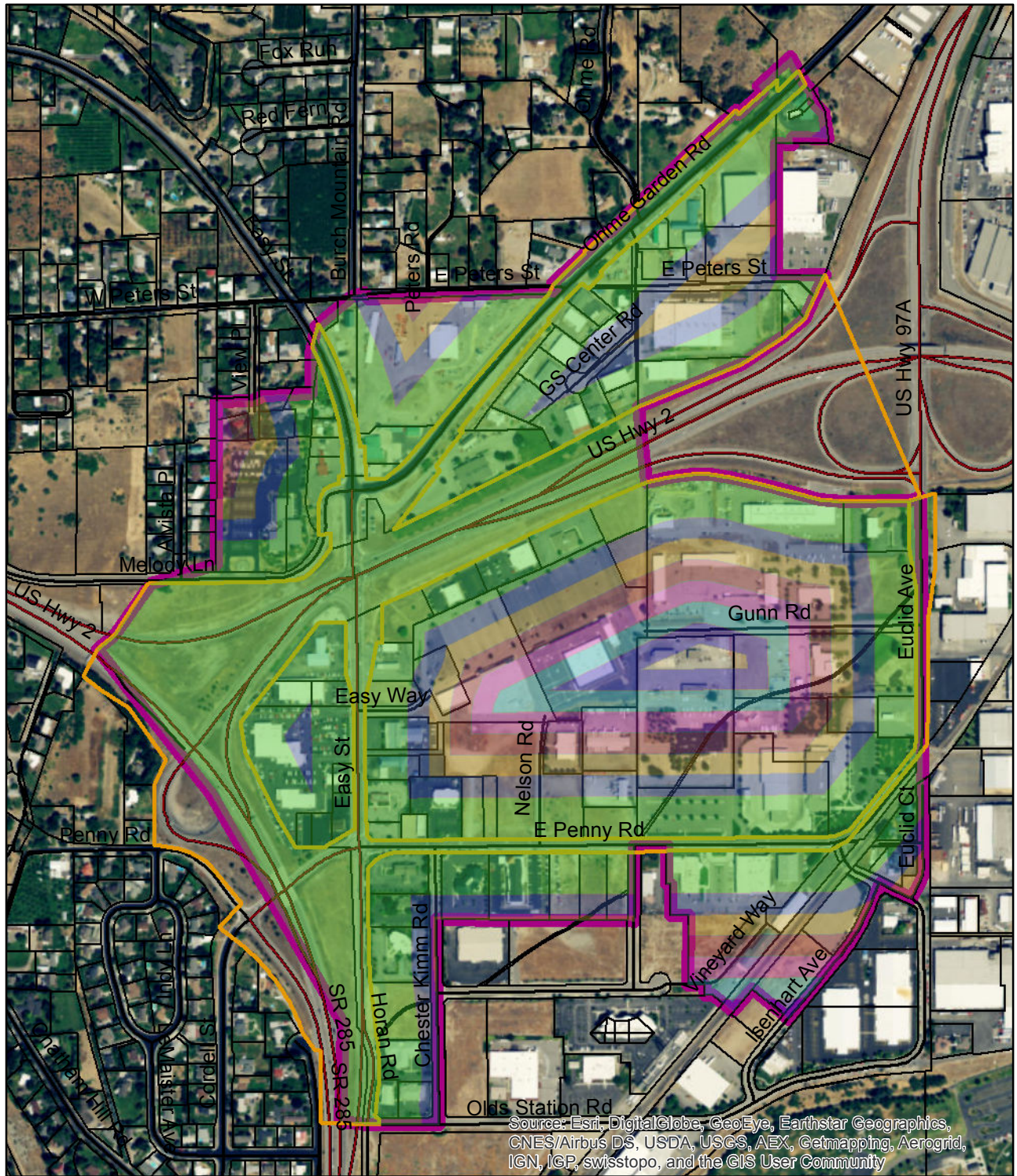


Buffer Analysis from gateway corridors in the North Wenatchee Business District in Olds Station **DRAFT**



Legend

Buffer from edge of ROW of gateway corridor

- 200 ft
- 300 ft

- 400 ft
- 500 ft
- 600 ft
- 700 ft
- 800 ft
- Gateway Corridor ROW
- Street Centerlines
- Parcels
- Urban Growth Area
- North Wenatchee Business District

