

Protecting you from Sanitary Sewer Overflows

The Wenatchee's Waste Water Treatment Plant has a crew that specializes in keeping the sewer lines clear from obstructions and functioning correctly. Normally, the 140 miles of sewer lines only require periodic maintenance, but garbage and grease can quickly cause these lines to plug. When a sewer line plugs there is the possibility of sewage backing up and overflowing.

The treatment plant has a plant operator on call 24 hours a day 7 days a week.



Questions? Please Call:

Wastewater Supervisor
888-3238

After Hours call:
888-3297

Feel free to call if you are having sewer problems, but as a general rule: unless you are having sewer problems that are affecting all of your drains it is most likely not a problem the city can remedy and a plumber will be necessary.



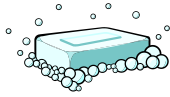
Wenatchee WWTP
201 N Worthen
Wenatchee, WA 98801

City of Wenatchee WASTE WATER TREATMENT PLANT

THIS IS NOT A GARBAGE CAN!



Please do not use the
sanitary sewer to dispose of
garbage.



The "Do Not Flush" List

Flushable Wet-Wipes *
Baby wipes
Kleenex
Paper towels
Cleaning towelettes
Toilet Wand Disposable Heads
Dust cloths
Diapers
Plastic items
Feminine care products
Grease and Oil (from cooking)
Floor cleaning disposable wipe
Automotive fluids
Rags

* Even wipes that are labeled as "flushable" should not be flushed because they do not quickly disperse like toilet paper



Disposable does not mean "flushable"!

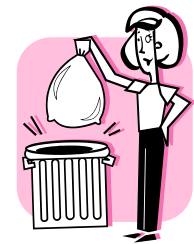
Recently, the City of Wenatchee Sewer Division has had to clean some sewer lines more than normal because disposable wipes and garbage are being flushed down the toilet.



These wipes, even if they are labeled as "flushable", should not be disposed of in the sanitary sewer system, they should be disposed of in the garbage. The fabric like strength of these wipes keeps them from quickly breaking apart like toilet paper. This results in the wipes getting caught in the sewer lines causing the sewer lines to clog.

When a sewer line gets clogged, a sewer back-up can occur. A sewer back-up could result in sewage backing-up into your house, your neighbor's house or into the streets. This creates a large mess, is costly to clean up and results in a Department of Ecology regulation violation for the City of Wenatchee. The additional cleaning of the sewer lines in your area increases maintenance costs, which could eventually be passed on to the homeowners.

Keeping the sewer system free of garbage protects the plumbing in your home and the City sewer system.



The City of Spokane Dept. of Wastewater Management produced a good video showing common items that shouldn't be flushed:

<http://www.youtube.com/watch?v=SLTVqkXVvNk&feature=youtu.be>